

Scott County Community Jail and Alternatives Phase One Study
Appendix A. FBI Index Crimes & Crime Rates by Police Agency (1996 - 1999)

Appendix A. FBI Index Crimes & Crime Rates by Police Agency

Table A.1 FBI Index Crimes and Crime Rates by Police Agency (1996-1999)

Index Crime	1996		1997		1998		1999	
	# Offenses	Rate/ 100,000	# Offenses	Rate/ 100,000	# Offenses	Rate/ 100,000	# Offenses	Rate/ 100,000
Scott County Sheriff's Of- fice/County Population		21,801		21,801		22,683		23,210
Crime Index	527	2,417	398	1,826	329	1,450	325	1,400
Violent Crime	20	92	18	83	37	163	33	142
Property Crime	507	2,326	380	1,743	292	1,287	292	1,258
Murder	0	0	0	0	0	0	0	0
Forcible Rape	2	9	0	0	4	18	4	17
Robbery	2	9	0	0	3	13	2	9
Aggravated Assault	16	73	18	83	30	132	27	116
Burglary	141	647	131	601	92	406	76	327
Larceny	349	1,601	236	1,083	187	824	201	866
Motor Vehicle Theft	17	78	13	60	13	57	15	65
Bettendorf Police Depart- ment/Population		30,888		30,888		31,220		31,814
Crime Index	1,154	3,736	1,100	3,561	988	3,165	945	2,970
Violent Crime	87	282	89	288	91	291	99	311
Property Crime	1,067	3,454	1,011	3,273	897	2,873	846	2,659
Murder	0	0	0	0	0	0	0	0
Forcible Rape	2	6	3	10	2	6	4	13
Robbery	17	55	10	32	9	29	11	35
Aggravated Assault	68	220	76	246	80	256	84	264
Burglary	182	589	172	557	141	452	117	368
Larceny	843	2,729	800	2,590	727	2,329	679	2,134
Motor Vehicle Theft	42	136	39	126	29	93	50	157
Davenport Police Depart- ment/Population		97,752		97,752		97,651		97,078
Crime Index	8,449	8,643	7,270	7,437	7,162	7,334	7,610	7,839
Violent Crime	1,480	1,514	1,288	1,318	1,400	1,434	1,423	1,466
Property Crime	6,969	7,129	5,982	6,120	5,762	5,901	6,187	6,373
Murder	4	4	2	2	3	3	3	3
Forcible Rape	55	56	58	59	60	61	58	60
Robbery	279	285	227	232	223	228	184	190
Aggravated Assault	1,142	1,168	1,001	1,024	1,114	1,141	1,178	1,213
Burglary	1,385	1,417	1,394	1,426	1,379	1,412	1,412	1,455
Larceny	5,107	5,224	4,140	4,235	3,994	4,090	4,334	4,464
Motor Vehicle Theft	477	488	448	458	389	398	441	454

Scott County Community Jail and Alternatives Phase One Study
Appendix A. FBI Index Crimes & Crime Rates by Police Agency (1996 - 1999)

Index Crime	1996		1997		1998		1999	
	# Offenses	Rate/ 100,000	# Offenses	Rate/ 100,000	# Offenses	Rate/ 100,000	# Offenses	Rate/ 100,000
Eldridge Police Department/Population		3,743		3,743		3,720		3,948
Crime Index	94	2,511	88	2,351	69	1,855	70	1,773
Violent Crime	4	107	7	187	2	54	2	51
Property Crime	90	2,404	81	2,164	67	1,801	68	1,722
Murder	0	0	0	0	0	0	0	0
Forcible Rape	0	0	0	0	0	0	1	25
Robbery	0	0	1	27	0	0	1	25
Aggravated Assault	4	107	6	160	2	54	0	0
Burglary	9	240	13	347	8	215	5	127
Larceny	75	2,004	66	1,763	56	1,505	60	1,520
Motor Vehicle Theft	6	160	2	53	3	81	3	76
LeClaire Police Department/Population		3,030		3,030		2,711		2,927
Crime Index	73	2,409	58	1,914	23	848	32	1,093
Violent Crime	4	132	3	99	2	74	0	0
Property Crime	69	2,277	55	1,815	21	775	32	1,093
Murder	0	0	1	33	0	0	0	0
Forcible Rape	0	0	1	33	0	0	0	0
Robbery	0	0	0	0	0	0	0	0
Aggravated Assault	4	132	1	33	2	74	0	0
Burglary	14	462	8	264	4	148	6	205
Larceny	53	1,749	42	1,386	16	590	25	854
Motor Vehicle Theft	2	66	5	165	1	37	1	34
Scott County Total		157,214		157,214		157,985		158,977
Crime Index	10,297	6,550	8,914		8,571	5,425	8,982	5,650
Violent Crime	1,595	1,015	1,405	894	1,532	970	1,557	979
Property Crime	8,702	5,535	7,509	4,776	7,039	4,455	7,425	4,670
Murder	4	3	3	2	3	2	3	2
Forcible Rape	59	38	62	39	66	42	67	42
Robbery	298	190	238	151	235	149	198	125
Aggravated Assault	1,234	785	1,102	701	1,228	777	1,289	811
Burglary	1,731	1,101	1,718	1,093	1,624	1,028	1,616	1,016
Larceny	6,427	4,088	5,284	3,361	4,980	3,152	5,299	3,333
Motor Vehicle Theft	544	346	507	322	435	275	510	321
State of Iowa					2,568,450		2,645,579	
Crime Index					87,506	3,407	86,891	3,284
Violent Crime					7,737	301	7,740	293
Property Crime					79,769	3,106	79,151	2,992
Murder					51	2	48	2

Scott County Community Jail and Alternatives Phase One Study
Appendix A. FBI Index Crimes & Crime Rates by Police Agency (1996 - 1999)

Index Crime	1996		1997		1998		1999	
	# Offenses	Rate/ 100,000	# Offenses	Rate/ 100,000	# Offenses	Rate/ 100,000	# Offenses	Rate/ 100,000
Forcible Rape					704	27	818	31
Robbery					1,103	43	1,058	40
Aggravated Assault					5,879	229	5,816	220
Burglary					16,502	642	15,391	582
Larceny					58,465	2,276	58,936	2,228
Motor Vehicle Theft					4,802	187	4,824	182
Cities 50,000 and over						609,118		717,545
Crime Index					42,344	6,952	45,187	6,297
Violent Crime					4,353	715	4,613	643
Property Crime					37,991	6,237	40,574	5,655
Murder					24	4	26	4
Forcible Rape					417	68	544	76
Robbery					849	139	841	117
Aggravated Assault					3,063	503	3,202	446
Burglary					7,037	1,155	7,414	1,033
Larceny					28,335	4,652	30,289	4,221
Motor Vehicle Theft					2,619	430	2,871	400
United States		5,079		4,923	4,616	4,616		4,267

**Scott County Community Jail and Alternatives Phase One Study
Appendix B. Iowa Group A Reported Crimes by Jurisdiction**

Appendix B. Iowa Group A Reported Crimes by Jurisdiction

Table B.1 Iowa Group A Reported Crimes

Offense	1996	% Subtotal	1997	% Subtotal	1998	% Subtotal	1999	% Subtotal
<i>Scott County Sheriff's Office</i>								
Murder	0	0.00%	0	0.00%	0	0.00%	0	0.00%
Negligent Manslaughter	0	0.00%	0	0.00%	0	0.00%	0	0.00%
Kidnaping	0	0.00%	0	0.00%	0	0.00%	0	0.00%
Sexual Assault	8	0.84%	4	0.55%	6	0.92%	7	1.02%
Robbery	2	0.21%	0	0.00%	3	0.46%	2	0.29%
Aggravated Assault	16	1.68%	18	2.46%	30	4.62%	27	3.93%
Simple Assault	145	15.22%	133	18.14%	103	15.85%	116	16.89%
Intimidation	0	0.00%	2	0.27%	5	0.77%	1	0.15%
Arson	0	0.00%	0	0.00%	0	0.00%	1	0.15%
Extortion/Blackmail	0	0.00%	0	0.00%	0	0.00%	0	0.00%
Burglary	141	14.80%	131	17.87%	92	14.15%	76	11.06%
Larceny	349	36.62%	236	32.20%	187	28.77%	201	29.26%
Motor Vehicle Theft	17	1.78%	13	1.77%	13	2.00%	15	2.18%
Theft by Fraud	14	1.47%	1	0.14%	10	1.54%	10	1.46%
Stolen Property Offense	0	0.00%	1	0.14%	0	0.00%	0	0.00%
Vandalism	210	22.04%	148	20.19%	142	21.85%	163	23.73%
Drug Offenses	46	4.83%	40	5.46%	54	8.31%	66	9.61%
Incest	0	0.00%	0	0.00%	0	0.00%	0	0.00%
Statutory Rape	1	0.10%	0	0.00%	1	0.15%	0	0.00%
Pornography	1	0.10%	0	0.00%	0	0.00%	1	0.15%
Gambling Offenses	0	0.00%	0	0.00%	0	0.00%	0	0.00%
Prostitution	0	0.00%	0	0.00%	0	0.00%	0	0.00%
Bribery	0	0.00%	0	0.00%	0	0.00%	0	0.00%
Weapons Violations	3	0.31%	6	0.82%	4	0.62%	1	0.15%
Subtotal Group A	953	100.00%	733	100.00%	650	100.00%	687	100.00%
% of Scott County Crimes	4.7%		4.1%		3.8%		3.8%	
<i>Bettendorf Police Department</i>								
Murder	0	0.00%	0	0.00%	0	0.00%	0	0.00%
Negligent Manslaughter	0	0.00%	0	0.00%	0	0.00%	0	0.00%
Kidnaping	3	0.14%	5	0.24%	1	0.05%	3	0.17%
Sexual Assault	10	0.47%	18	0.86%	11	0.58%	14	0.78%
Robbery	17	0.80%	10	0.48%	9	0.47%	11	0.61%
Aggravated Assault	68	3.20%	76	3.61%	80	4.19%	84	4.66%
Simple Assault	180	8.47%	261	12.40%	234	12.26%	201	11.16%

**Scott County Community Jail and Alternatives Phase One Study
Appendix B. Iowa Group A Reported Crimes by Jurisdiction**

Offense	1996	% Subtotal	1997	% Subtotal	1998	% Subtotal	1999	% Subtotal
Intimidation	68	3.20%	40	1.90%	31	1.62%	23	1.28%
Arson	18	0.85%	16	0.76%	14	0.73%	18	1.00%
Extortion/Blackmail	1	0.05%	1	0.05%	1	0.05%	2	0.11%
Burglary	183	8.61%	175	8.31%	141	7.39%	119	6.61%
Larceny	881	41.46%	852	40.48%	764	40.02%	723	40.14%
Motor Vehicle Theft	45	2.12%	42	2.00%	30	1.57%	51	2.83%
Theft by Fraud	121	5.69%	96	4.56%	123	6.44%	107	5.94%
Stolen Property Offense	36	1.69%	33	1.57%	14	0.73%	16	0.89%
Vandalism	337	15.86%	313	14.87%	304	15.92%	267	14.83%
Drug Offenses	131	6.16%	135	6.41%	132	6.91%	148	8.22%
Incest	0	0.00%	1	0.05%	1	0.05%	0	0.00%
Statutory Rape	1	0.05%	1	0.05%	0	0.00%	1	0.06%
Pornography	1	0.05%	1	0.05%	1	0.05%	0	0.00%
Gambling Offenses	0	0.00%	0	0.00%	0	0.00%	0	0.00%
Prostitution	0	0.00%	10	0.48%	2	0.10%	2	0.11%
Bribery	0	0.00%	0	0.00%	0	0.00%	0	0.00%
Weapons Violations	24	1.13%	19	0.90%	16	0.84%	11	0.61%
Subtotal Group A	2,125	100.00%	2,105	100.00%	1,909	100.00%	1,801	100.00%
% of Scott County Crimes	10.4%		11.7%		11.2%		9.9%	
<i>Davenport Police Department</i>								
Murder	4	0.02%	2	0.01%	3	0.02%	3	0.02%
Negligent Manslaughter	1	0.01%	1	0.01%	0	0.00%	0	0.00%
Kidnaping	24	0.14%	10	0.07%	13	0.09%	15	0.10%
Sexual Assault	121	0.72%	124	0.84%	101	0.71%	117	0.76%
Robbery	281	1.66%	229	1.55%	223	1.56%	185	1.20%
Aggravated Assault	1,147	6.78%	1,013	6.87%	1,126	7.89%	1,185	7.70%
Simple Assault	2,006	11.86%	1,779	12.06%	1,723	12.08%	2,022	13.14%
Intimidation	546	3.23%	448	3.04%	413	2.89%	530	3.45%
Arson	62	0.37%	40	0.27%	50	0.35%	56	0.36%
Extortion/Blackmail	5	0.03%	3	0.02%	4	0.03%	2	0.01%
Burglary	1,396	8.26%	1,411	9.56%	1,404	9.84%	1,438	9.35%
Larceny	5,180	30.64%	4,178	28.32%	4,036	28.29%	4,381	28.48%
Motor Vehicle Theft	487	2.88%	455	3.08%	399	2.80%	454	2.95%
Theft by Fraud	556	3.29%	506	3.43%	551	3.86%	559	3.63%
Stolen Property Offense	42	0.25%	15	0.10%	7	0.05%	3	0.02%
Vandalism	3,828	22.64%	3,003	20.35%	3,039	21.30%	3,448	22.41%
Drug Offenses	1,040	6.15%	1,288	8.73%	971	6.80%	802	5.21%
Incest	4	0.02%	5	0.03%	0	0.00%	2	0.01%

**Scott County Community Jail and Alternatives Phase One Study
Appendix B. Iowa Group A Reported Crimes by Jurisdiction**

Offense	1996	% Subtotal	1997	% Subtotal	1998	% Subtotal	1999	% Subtotal
Statutory Rape	12	0.07%	14	0.09%	6	0.04%	12	0.08%
Pornography	1	0.01%	1	0.01%	5	0.04%	6	0.04%
Gambling Offenses	1	0.01%	0	0.00%	0	0.00%	0	0.00%
Prostitution	61	0.36%	133	0.90%	86	0.60%	81	0.53%
Bribery	0	0.00%	1	0.01%	0	0.00%	1	0.01%
Weapons Violations	102	0.60%	95	0.64%	109	0.76%	81	0.53%
Subtotal Group A	16,907	100.00%	14,754	100.00%	14,269	100.00%	15,383	100.00%
% of Scott County Crimes	83.0%		82.1%		83.5%		84.9%	
<i>Eldridge Police Department</i>								
Murder	0	0.00%	0	0.00%	0	0.00%	0	0.00%
Negligent Manslaughter	0	0.00%	0	0.00%	0	0.00%	0	0.00%
Kidnaping	0	0.00%	0	0.00%	0	0.00%	0	0.00%
Sexual Assault	0	0.00%	1	0.36%	2	0.98%	3	1.61%
Robbery	0	0.00%	1	0.36%	0	0.00%	1	0.54%
Aggravated Assault	4	1.60%	7	2.54%	2	0.98%	1	0.54%
Simple Assault	18	7.20%	20	7.25%	6	2.93%	20	10.75%
Intimidation	45	18.00%	41	14.86%	18	8.78%	4	2.15%
Arson	1	0.40%	0	0.00%	2	0.98%	0	0.00%
Extortion/Blackmail	0	0.00%	0	0.00%	8	3.90%	0	0.00%
Burglary	9	3.60%	13	4.71%	0	0.00%	6	3.23%
Larceny	75	30.00%	66	23.91%	60	29.27%	63	33.87%
Motor Vehicle Theft	6	2.40%	2	0.72%	3	1.46%	3	1.61%
Theft by Fraud	1	0.40%	9	3.26%	6	2.93%	5	2.69%
Stolen Property Offense	0	0.00%	1	0.36%	1	0.49%	0	0.00%
Vandalism	69	27.60%	89	32.25%	66	32.20%	58	31.18%
Drug Offenses	19	7.60%	26	9.42%	30	14.63%	22	11.83%
Incest	0	0.00%	0	0.00%	0	0.00%	0	0.00%
Statutory Rape	1	0.40%	0	0.00%	0	0.00%	0	0.00%
Pornography	0	0.00%	0	0.00%	0	0.00%	0	0.00%
Gambling Offenses	0	0.00%	0	0.00%	0	0.00%	0	0.00%
Prostitution	0	0.00%	0	0.00%	0	0.00%	0	0.00%
Bribery	0	0.00%	0	0.00%	0	0.00%	0	0.00%
Weapons Violations	2	0.80%	0	0.00%	1	0.49%	0	0.00%
Subtotal Group A	250	100.00%	276	100.00%	205	100.00%	186	100.00%
% of Scott County Crimes	1.2%		1.5%		1.2%		1.0%	

**Scott County Community Jail and Alternatives Phase One Study
Appendix B. Iowa Group A Reported Crimes by Jurisdiction**

Offense	1996	% Subtotal	1997	% Subtotal	1998	% Subtotal	1999	% Subtotal
<i>Le Claire Police Department</i>								
Murder	0	0.00%	1	1.06%	0	0.00%	0	0.00%
Negligent Manslaughter	0	0.00%	0	0.00%	0	0.00%	0	0.00%
Kidnaping	0	0.00%	0	0.00%	0	0.00%	1	1.52%
Sexual Assault	1	0.80%	1	1.06%	0	0.00%	0	0.00%
Robbery	0	0.00%	0	0.00%	0	0.00%	0	0.00%
Aggravated Assault	4	3.20%	1	1.06%	2	3.92%	0	0.00%
Simple Assault	5	4.00%	8	8.51%	5	9.80%	8	12.12%
Intimidation	0	0.00%	0	0.00%	0	0.00%	0	0.00%
Arson	2	1.60%	0	0.00%	0	0.00%	0	0.00%
Extortion/Blackmail	0	0.00%	0	0.00%	0	0.00%	0	0.00%
Burglary	15	12.00%	8	8.51%	4	7.84%	6	9.09%
Larceny	58	46.40%	46	48.94%	19	37.25%	30	45.45%
Motor Vehicle Theft	2	1.60%	5	5.32%	1	1.96%	1	1.52%
Theft by Fraud	1	0.80%	0	0.00%	0	0.00%	2	3.03%
Stolen Property Offense	0	0.00%	0	0.00%	0	0.00%	0	0.00%
Vandalism	30	24.00%	19	20.21%	16	31.37%	14	21.21%
Drug Offenses	7	5.60%	5	5.32%	4	7.84%	4	6.06%
Incest	0	0.00%		0.00%	0	0.00%	0	0.00%
Statutory Rape	0	0.00%		0.00%	0	0.00%	0	0.00%
Pornography	0	0.00%		0.00%	0	0.00%	0	0.00%
Gambling Offenses	0	0.00%		0.00%	0	0.00%	0	0.00%
Prostitution	0	0.00%		0.00%	0	0.00%	0	0.00%
Bribery	0	0.00%		0.00%	0	0.00%	0	0.00%
Weapons Violations	0	0.00%		0.00%	0	0.00%	0	0.00%
Subtotal Group A	125	100.00%	94	100.00%	51	100.00%	66	100.00%
% of Scott County Crimes	0.6%		0.5%		0.3%		0.4%	
<i>Scott County Totals</i>								
Murder	4	0.02%	3	0.02%	3	0.02%	3	0.02%
Negligent Manslaughter	1	0.00%	1	0.01%	0	0.00%	0	0.00%
Kidnaping	27	0.13%	15	0.08%	14	0.08%	19	0.10%
Sexual Assault	140	0.69%	148	0.82%	120	0.70%	141	0.78%
Robbery	300	1.47%	240	1.34%	235	1.38%	199	1.10%
Aggravated Assault	1,239	6.09%	1,115	6.21%	1,240	7.26%	1,297	7.16%
Simple Assault	2,354	11.56%	2,201	12.25%	2,071	12.12%	2,367	13.06%
Intimidation	659	3.24%	531	2.96%	467	2.73%	558	3.08%
Arson	83	0.41%	56	0.31%	66	0.39%	75	0.41%
Extortion/Blackmail	6	0.03%	4	0.02%	13	0.08%	4	0.02%

**Scott County Community Jail and Alternatives Phase One Study
Appendix B. Iowa Group A Reported Crimes by Jurisdiction**

Offense	1996	%	1997	%	1998	%	1999	%
		Subtotal		Subtotal		Subtotal		Subtotal
Burglary	1,744	8.57%	1,738	9.68%	1,641	9.61%	1,645	9.08%
Larceny	6,543	32.14%	5,378	29.94%	5,066	29.65%	5,398	29.79%
Motor Vehicle Theft	557	2.74%	517	2.88%	446	2.61%	524	2.89%
Theft by Fraud	693	3.40%	612	3.41%	690	4.04%	683	3.77%
Stolen Property Offense	78	0.38%	50	0.28%	22	0.13%	19	0.10%
Vandalism	4,474	21.97%	3,572	19.89%	3,567	20.88%	3,950	21.80%
Drug Offenses	1,243	6.11%	1,494	8.32%	1,191	6.97%	1,042	5.75%
Incest	4	0.02%	6	0.03%	1	0.01%	2	0.01%
Statutory Rape	15	0.07%	15	0.08%	7	0.04%	13	0.07%
Pornography	3	0.01%	2	0.01%	6	0.04%	7	0.04%
Gambling Offenses	1	0.00%	0	0.00%	0	0.00%	0	0.00%
Prostitution	61	0.30%	143	0.80%	88	0.52%	83	0.46%
Bribery	0	0.00%	1	0.01%	0	0.00%	1	0.01%
Weapons Violations	131	0.64%	120	0.67%	130	0.76%	93	0.51%
Subtotal Group A	20,360	100.00%	17,962	100.00%	17,084	100.00%	18,123	100.00%

Appendix C. Group B Arrests by Jurisdiction

These tables are large and are displayed on the following pages.

Table C.1 Detail of Arrests by Charge by Agency (1991 - 1999)

Offense Category	Offense	1991	%	1992	%	1993	%	1994	%	1995	%	1996	%	1997	%	1998	%	1999	%	
Scott County Sheriff's Office																				
Group A	Murder	0	0.0%	2	0.2%	4	0.3%	1	0.1%	0	0.0%	0	0.0%	0	0.0%	0	0.0%	0	0.0%	
	Negligent Manslaughter	0	0.0%	0	0.0%	0	0.0%	0	0.0%	0	0.0%	0	0.0%	0	0.0%	0	0.0%	0	0.0%	
	Kidnaping	0	0.0%	0	0.0%	0	0.0%	0	0.0%	0	0.0%	0	0.0%	0	0.0%	1	0.0%	0	0.0%	
	Sexual Assault	2	0.2%	3	0.2%	3	0.2%	3	0.2%	3	0.2%	0	0.0%	0	0.0%	2	0.1%	1	0.0%	
	Robbery	0	0.0%	2	0.2%	4	0.3%	3	0.2%	5	0.3%	1	0.0%	0	0.0%	0	0.0%	1	0.0%	
	Aggravated Assault	20	1.5%	23	1.9%	27	2.0%	27	1.9%	32	2.0%	43	2.1%	40	2.1%	29	1.4%	31	1.5%	
	Simple Assault	46	3.6%	33	2.7%	46	3.4%	37	2.5%	36	2.3%	44	2.2%	50	2.6%	37	1.8%	44	2.2%	
	Intimidation	0	0.0%	0	0.0%	0	0.0%	0	0.0%	0	0.0%	0	0.0%	0	0.0%	0	0.0%	0	0.0%	
	Arson	0	0.0%	0	0.0%	5	0.4%	0	0.0%	0	0.0%	0	0.0%	0	0.0%	0	0.0%	3	0.1%	
	Extortion/Blackmail	0	0.0%	0	0.0%	0	0.0%	1	0.1%	0	0.0%	0	0.0%	0	0.0%	0	0.0%	0	0.0%	
	Burglary	17	1.3%	25	2.1%	18	1.3%	20	1.4%	6	0.4%	10	0.5%	2	0.1%	13	0.6%	7	0.3%	
	Larceny	9	0.7%	31	2.6%	45	3.4%	20	1.4%	40	2.5%	56	2.8%	43	2.2%	27	1.3%	27	1.3%	
	Motor Vehicle Theft	6	0.5%	2	0.2%	8	0.6%	0	0.0%	2	0.1%	2	0.1%	3	0.2%	1	0.0%	1	0.0%	
	Theft by Fraud	16	1.2%	12	1.0%	18	1.3%	8	0.6%	4	0.3%	2	0.1%	0	0.0%	0	0.0%	1	0.0%	
	Stolen Property Offense	0	0.0%	0	0.0%	2	0.1%	0	0.0%	0	0.0%	0	0.0%	0	0.0%	0	0.0%	0	0.0%	
	Vandalism	10	0.8%	8	0.7%	12	0.9%	14	1.0%	1	0.1%	27	1.3%	5	0.3%	9	0.4%	5	0.2%	
	Drug Offenses	44	3.4%	80	6.6%	40	3.0%	32	2.2%	42	2.7%	51	2.5%	38	2.0%	46	2.2%	63	3.1%	
	Incest	0	0.0%	0	0.0%	0	0.0%	0	0.0%	0	0.0%	0	0.0%	0	0.0%	0	0.0%	0	0.0%	
	Statutory Rape	0	0.0%	0	0.0%	0	0.0%	0	0.0%	0	0.0%	0	0.0%	0	0.0%	0	0.0%	0	0.0%	
	Pornography	0	0.0%	0	0.0%	0	0.0%	0	0.0%	0	0.0%	0	0.0%	0	0.0%	0	0.0%	0	0.0%	
	Gambling Offenses	0	0.0%	0	0.0%	0	0.0%	0	0.0%	0	0.0%	0	0.0%	0	0.0%	0	0.0%	0	0.0%	
	Prostitution	0	0.0%	1	0.1%	2	0.1%	0	0.0%	0	0.0%	0	0.0%	0	0.0%	0	0.0%	0	0.0%	
	Bribery	0	0.0%	0	0.0%	0	0.0%	0	0.0%	0	0.0%	0	0.0%	0	0.0%	0	0.0%	0	0.0%	
Weapons Violations	7	0.5%	3	0.2%	6	0.4%	4	0.3%	4	0.3%	2	0.1%	3	0.2%	3	0.1%	1	0.0%		
Subtotal Group A		177	13.7%	225	18.5%	240	18.0%	170	11.7%	175	11.1%	238	11.7%	184	9.6%	168	8.2%	185	9.2%	
Group B	Bad Checks	0	0.0%	0	0.0%	0	0.0%	1	0.1%	0	0.0%	0	0.0%	0	0.0%	0	0.0%	0	0.0%	
	Curfew/Loitering	0	0.0%	0	0.0%	0	0.0%	0	0.0%	0	0.0%	0	0.0%	0	0.0%	0	0.0%	0	0.0%	
	Disorderly Conduct	12	0.9%	8	0.7%	27	2.0%	6	0.4%	9	0.6%	11	0.5%	10	0.5%	6	0.3%	17	0.8%	
	DUI	305	23.6%	158	13.0%	169	12.6%	155	10.7%	141	9.0%	179	8.8%	153	8.0%	211	10.3%	231	11.5%	
	Drunkenness	41	3.2%	20	1.6%	14	1.0%	7	0.5%	18	1.1%	16	0.8%	23	1.2%	16	0.8%	22	1.1%	
	Family Offense	1	0.1%	0	0.0%	1	0.1%	1	0.1%	1	0.1%	0	0.0%	0	0.0%	1	0.0%	0	0.0%	
	Liquor Law Violation	68	5.3%	89	7.3%	80	6.0%	113	7.8%	68	4.3%	51	2.5%	49	2.6%	127	6.2%	102	5.1%	
	Runaway	0	0.0%	0	0.0%	0	0.0%	0	0.0%	0	0.0%	0	0.0%	0	0.0%	0	0.0%	0	0.0%	
	Trespass	12	0.9%	9	0.7%	16	1.2%	6	0.4%	5	0.3%	6	0.3%	10	0.5%	13	0.6%	6	0.3%	
	All Other Offenses	679	52.4%	705	58.1%	790	59.1%	992	68.4%	1,158	73.5%	1,533	75.4%	1,485	77.6%	1,507	73.5%	1,442	71.9%	
	Subtotal Group B		1,118	86.3%	989	81.5%	1,097	82.0%	1,281	88.3%	1,400	88.9%	1,796	88.3%	1,730	90.4%	1,881	91.8%	1,820	90.8%
	Total Reported Arrests		1,295	100.0%	1,214	100.0%	1,337	100.0%	1,451	100.0%	1,575	100.0%	2,034	100.0%	1,914	100.0%	2,049	100.0%	2,005	100.0%
Percent of Scott County Arrests			16.9%		14.9%		15.2%		16.9%		16.4%		19.4%		18.5%		20.8%		21.1%	

Offense Category	Offense	1991	%	1992	%	1993	%	1994	%	1995	%	1996	%	1997	%	1998	%	1999	%
Bettendorf Police Department																			
Group A	Murder	0	0.0%	0	0.0%	0	0.0%	0	0.0%	2	0.1%	0	0.0%	0	0.0%	0	0.0%	0	0.0%
	Negligent Manslaughter	0	0.0%	0	0.0%	0	0.0%	0	0.0%	0	0.0%	0	0.0%	0	0.0%	0	0.0%	0	0.0%
	Kidnaping	0	0.0%	1	0.1%	1	0.1%	2	0.2%	0	0.0%	0	0.0%	5	0.3%	0	0.0%	0	0.0%
	Sexual Assault	4	0.4%	2	0.2%	8	0.7%	1	0.1%	3	0.2%	0	0.0%	6	0.3%	4	0.3%	2	0.1%
	Robbery	2	0.2%	5	0.5%	13	1.1%	3	0.2%	1	0.1%	3	0.2%	4	0.2%	4	0.3%	10	0.6%
	Aggravated Assault	39	4.0%	26	2.4%	66	5.5%	66	5.1%	90	5.5%	57	3.3%	46	2.6%	43	2.8%	48	3.1%
	Simple Assault	68	7.0%	39	3.6%	43	3.6%	75	5.8%	67	4.1%	81	4.7%	114	6.6%	92	5.9%	96	6.2%
	Intimidation	1	0.1%	1	0.1%	5	0.4%	9	0.7%	6	0.4%	8	0.5%	6	0.3%	8	0.5%	3	0.2%
	Arson	7	0.7%	1	0.1%	7	0.6%	3	0.2%	4	0.2%	11	0.6%	5	0.3%	6	0.4%	9	0.6%
	Extortion/Blackmail	0	0.0%	1	0.1%	0	0.0%	3	0.2%	0	0.0%	0	0.0%	1	0.1%	0	0.0%	2	0.1%
	Burglary	46	4.7%	38	3.5%	23	1.9%	34	2.6%	19	1.2%	42	2.4%	35	2.0%	20	1.3%	17	1.1%
	Larceny	187	19.2%	284	26.5%	245	20.5%	239	18.3%	245	15.0%	263	15.3%	246	14.2%	228	14.7%	178	11.5%
	Motor Vehicle Theft	8	0.8%	3	0.3%	6	0.5%	24	1.8%	18	1.1%	9	0.5%	16	0.9%	15	1.0%	12	0.8%
	Theft by Fraud	20	2.1%	23	2.1%	27	2.3%	37	2.8%	38	2.3%	38	2.2%	34	2.0%	42	2.7%	33	2.1%
	Stolen Property Offense	2	0.2%	8	0.7%	13	1.1%	7	0.5%	37	2.3%	32	1.9%	27	1.6%	12	0.8%	7	0.5%
	Vandalism	22	2.3%	26	2.4%	31	2.6%	49	3.8%	80	4.9%	62	3.6%	38	2.2%	46	3.0%	43	2.8%
	Drug Offenses	30	3.1%	56	5.2%	82	6.9%	125	9.6%	158	9.7%	158	9.2%	140	8.1%	113	7.3%	126	8.1%
	Incest	1	0.1%	0	0.0%	0	0.0%	0	0.0%	1	0.1%	0	0.0%	0	0.0%	0	0.0%	0	0.0%
	Statutory Rape	1	0.1%	1	0.1%	1	0.1%	1	0.1%	0	0.0%	1	0.1%	0	0.0%	0	0.0%	1	0.1%
	Pornography	0	0.0%	0	0.0%	1	0.1%	0	0.0%	0	0.0%	0	0.0%	0	0.0%	0	0.0%	0	0.0%
	Gambling Offenses	0	0.0%	0	0.0%	0	0.0%	0	0.0%	0	0.0%	0	0.0%	0	0.0%	0	0.0%	0	0.0%
	Prostitution	0	0.0%	0	0.0%	0	0.0%	1	0.1%	2	0.1%	0	0.0%	12	0.7%	2	0.1%	0	0.0%
	Bribery	0	0.0%	0	0.0%	0	0.0%	0	0.0%	0	0.0%	0	0.0%	0	0.0%	0	0.0%	0	0.0%
Weapons Violations	6	0.6%	4	0.4%	8	0.7%	10	0.8%	24	1.5%	8	0.5%	12	0.7%	6	0.4%	9	0.6%	
Subtotal Group A		444	45.6%	519	48.4%	580	48.5%	689	52.9%	795	48.6%	773	45.0%	747	43.0%	641	41.3%	596	38.4%
Group B	Bad Checks	6	0.6%	5	0.5%	10	0.8%	4	0.3%	0	0.0%	0	0.0%	0	0.0%	1	0.1%	0	0.0%
	Curfew/Loitering	0	0.0%	0	0.0%	1	0.1%	69	5.3%	117	7.1%	74	4.3%	74	4.3%	87	5.6%	70	4.5%
	Disorderly Conduct	30	3.1%	19	1.8%	39	3.3%	24	1.8%	19	1.2%	24	1.4%	21	1.2%	25	1.6%	55	3.5%
	DUI	161	16.5%	172	16.0%	134	11.2%	108	8.3%	142	8.7%	142	8.3%	130	7.5%	132	8.5%	147	9.5%
	Drunkness	15	1.5%	16	1.5%	22	1.8%	13	1.0%	19	1.2%	26	1.5%	19	1.1%	31	2.0%	39	2.5%
	Family Offense	0	0.0%	0	0.0%	0	0.0%	2	0.2%	1	0.1%	3	0.2%	0	0.0%	2	0.1%	2	0.1%
	Liquor Law Violation	60	6.2%	55	5.1%	90	7.5%	98	7.5%	204	12.5%	306	17.8%	309	17.8%	301	19.4%	402	25.9%
	Runaway	103	10.6%	135	12.6%	138	11.5%	119	9.1%	153	9.3%	141	8.2%	137	7.9%	53	3.4%	0	0.0%
	Trespass	14	1.4%	31	2.9%	33	2.8%	17	1.3%	41	2.5%	37	2.2%	30	1.7%	19	1.2%	29	1.9%
	All Other Offenses	141	14.5%	120	11.2%	150	12.5%	160	12.3%	146	8.9%	190	11.1%	269	15.5%	261	16.8%	212	13.7%
	Subtotal Group B		530	54.4%	553	51.6%	617	51.5%	614	47.1%	842	51.4%	943	55.0%	989	57.0%	912	58.7%	956
Total Reported Arrests		974	100.0%	1,072	100.0%	1,197	100.0%	1,303	100.0%	1,637	100.0%	1,716	100.0%	1,736	100.0%	1,553	100.0%	1,552	100.0%
Percent of Scott County Arrests			12.7%		13.1%		13.6%		15.1%		17.1%		16.4%		16.8%		15.7%		16.3%

Offense Category	Offense	1991	%	1992	%	1993	%	1994	%	1995	%	1996	%	1997	%	1998	%	1999	%
Davenport Police Department																			
Group A	Murder	10	0.2%	3	0.1%	10	0.2%	8	0.1%	8	0.1%	6	0.1%	4	0.1%	1	0.0%	5	0.1%
	Negligent Manslaughter	0	0.0%	0	0.0%	0	0.0%	1	0.0%	1	0.0%	1	0.0%	4	0.1%	0	0.0%	0	0.0%
	Kidnaping	0	0.0%	13	0.2%	4	0.1%	2	0.0%	4	0.1%	8	0.1%	6	0.1%	4	0.1%	4	0.1%
	Sexual Assault	56	1.1%	43	0.7%	40	0.7%	31	0.6%	28	0.5%	29	0.4%	37	0.6%	17	0.3%	32	0.6%
	Robbery	93	1.8%	97	1.7%	94	1.6%	117	2.1%	114	1.9%	88	1.4%	77	1.2%	84	1.4%	64	1.1%
	Aggravated Assault	335	6.3%	391	6.8%	397	6.7%	457	8.2%	449	7.3%	435	6.7%	444	7.0%	459	7.7%	542	9.6%
	Simple Assault	452	8.5%	428	7.4%	485	8.2%	489	8.8%	597	9.7%	684	10.6%	568	8.9%	677	11.4%	744	13.2%
	Intimidation	13	0.2%	15	0.3%	18	0.3%	9	0.2%	31	0.5%	37	0.6%	27	0.4%	33	0.6%	34	0.6%
	Arson	26	0.5%	18	0.3%	19	0.3%	27	0.5%	19	0.3%	18	0.3%	6	0.1%	9	0.2%	14	0.2%
	Extortion/Blackmail	4	0.1%	2	0.0%	0	0.0%	0	0.0%	0	0.0%	0	0.0%	0	0.0%	1	0.0%	1	0.0%
	Burglary	323	6.1%	256	4.4%	323	5.4%	282	5.1%	212	3.5%	181	2.8%	198	3.1%	220	3.7%	203	3.6%
	Larceny	1,092	20.6%	1,276	22.1%	1,241	20.9%	1,224	21.9%	1,129	18.4%	1,163	18.0%	1,153	18.1%	1,144	19.2%	950	16.8%
	Motor Vehicle Theft	97	1.8%	98	1.7%	103	1.7%	107	1.9%	141	2.3%	110	1.7%	86	1.4%	106	1.8%	93	1.6%
	Theft by Fraud	164	3.1%	179	3.1%	108	1.8%	83	1.5%	140	2.3%	177	2.7%	190	3.0%	195	3.3%	216	3.8%
	Stolen Property Offense	1	0.0%	3	0.1%	22	0.4%	32	0.6%	19	0.3%	19	0.3%	17	0.3%	5	0.1%	11	0.2%
	Vandalism	259	4.9%	241	4.2%	230	3.9%	210	3.8%	209	3.4%	198	3.1%	181	2.8%	218	3.7%	234	4.1%
	Drug Offenses	282	5.3%	604	10.5%	672	11.3%	612	11.0%	787	12.8%	896	13.9%	1,114	17.5%	784	13.2%	643	11.4%
	Incest	3	0.1%	1	0.0%	0	0.0%	1	0.0%	0	0.0%	0	0.0%	0	0.0%	0	0.0%	3	0.1%
	Statutory Rape	4	0.1%	1	0.0%	6	0.1%	2	0.0%	7	0.1%	6	0.1%	2	0.0%	3	0.1%	8	0.1%
	Pornography	0	0.0%	1	0.0%	2	0.0%	0	0.0%	0	0.0%	0	0.0%	0	0.0%	3	0.1%	0	0.0%
	Gambling Offenses	0	0.0%	6	0.1%	0	0.0%	0	0.0%	0	0.0%	0	0.0%	0	0.0%	0	0.0%	0	0.0%
	Prostitution	80	1.5%	84	1.5%	84	1.4%	93	1.7%	91	1.5%	63	1.0%	124	1.9%	88	1.5%	77	1.4%
	Bribery	0	0.0%	0	0.0%	0	0.0%	0	0.0%	0	0.0%	0	0.0%	0	0.0%	0	0.0%	0	0.0%
Weapons Violations	55	1.0%	63	1.1%	90	1.5%	108	1.9%	99	1.6%	61	0.9%	55	0.9%	86	1.4%	54	1.0%	
Subtotal Group A	3,349	63.0%	3,823	66.2%	3,948	66.4%	3,895	69.8%	4,085	66.7%	4,180	64.8%	4,293	67.5%	4,137	69.5%	3,932	69.5%	
Group B	Bad Checks	16	0.3%	18	0.3%	19	0.3%	19	0.3%	5	0.1%	11	0.2%	8	0.1%	14	0.2%	15	0.3%
	Curfew/Loitering	22	0.4%	29	0.5%	11	0.2%	7	0.1%	19	0.3%	36	0.6%	24	0.4%	28	0.5%	10	0.2%
	Disorderly Conduct	230	4.3%	244	4.2%	218	3.7%	196	3.5%	244	4.0%	292	4.5%	221	3.5%	264	4.4%	214	3.8%
	DUI	474	8.9%	377	6.5%	436	7.3%	384	6.9%	344	5.6%	473	7.3%	405	6.4%	269	4.5%	301	5.3%
	Drunkness	187	3.5%	156	2.7%	229	3.9%	152	2.7%	228	3.7%	231	3.6%	198	3.1%	154	2.6%	164	2.9%
	Family Offense	12	0.2%	6	0.1%	2	0.0%	3	0.1%	6	0.1%	6	0.1%	4	0.1%	8	0.1%	8	0.1%
	Liquor Law Violation	196	3.7%	159	2.8%	213	3.6%	144	2.6%	182	3.0%	263	4.1%	241	3.8%	251	4.2%	233	4.1%
	Runaway	0	0.0%	2	0.0%	1	0.0%	0	0.0%	0	0.0%	1	0.0%	0	0.0%	0	0.0%	0	0.0%
	Trespass	138	2.6%	175	3.0%	180	3.0%	115	2.1%	129	2.1%	184	2.9%	144	2.3%	146	2.5%	148	2.6%
	All Other Offenses	689	13.0%	783	13.6%	686	11.5%	668	12.0%	885	14.4%	773	12.0%	824	13.0%	681	11.4%	632	11.2%
	Subtotal Group B	1,964	37.0%	1,949	33.8%	1,995	33.6%	1,688	30.2%	2,042	33.3%	2,270	35.2%	2,069	32.5%	1,815	30.5%	1,725	30.5%
	Total Reported Arrests	5,313	100.0%	5,772	100.0%	5,943	100.0%	5,583	100.0%	6,127	100.0%	6,450	100.0%	6,362	100.0%	5,952	100.0%	5,657	100.0%
Percent of Scott County Arrests		69.3%		70.6%		67.6%		64.9%		63.9%		61.5%		61.5%		60.3%		59.5%	

Offense Category	Offense	1991	%	1992	%	1993	%	1994	%	1995	%	1996	%	1997	%	1998	%	1999	%	
Eldridge Police Department																				
Group A	Murder	0	0.0%	0	0.0%	0	0.0%	0	0.0%	0	0.0%	0	0.0%	0	0.0%	0	0.0%	0	0.0%	
	Negligent Manslaughter	0	0.0%	0	0.0%	0	0.0%	0	0.0%	0	0.0%	0	0.0%	0	0.0%	0	0.0%	0	0.0%	
	Kidnaping	0	0.0%	0	0.0%	0	0.0%	0	0.0%	0	0.0%	0	0.0%	0	0.0%	0	0.0%	0	0.0%	
	Sexual Assault	0	0.0%	0	0.0%	0	0.0%	0	0.0%	1	0.6%	0	0.0%	0	0.0%	1	0.4%	2	0.9%	
	Robbery	0	0.0%	0	0.0%	0	0.0%	0	0.0%	0	0.0%	0	0.0%	0	0.0%	0	0.0%	1	0.5%	
	Aggravated Assault	0	0.0%	0	0.0%	1	0.5%	1	0.6%	2	1.1%	0	0.0%	3	1.5%	1	0.4%	0	0.0%	
	Simple Assault	0	0.0%	0	0.0%	5	2.7%	9	5.0%	10	5.7%	7	3.9%	11	5.5%	4	1.7%	9	4.3%	
	Intimidation	0	0.0%	0	0.0%	1	0.5%	3	1.7%	2	1.1%	1	0.6%	0	0.0%	0	0.0%	0	0.0%	
	Arson	0	0.0%	0	0.0%	3	1.6%	0	0.0%	0	0.0%	0	0.0%	0	0.0%	0	0.0%	0	0.0%	
	Extortion/Blackmail	0	0.0%	0	0.0%	0	0.0%	0	0.0%	0	0.0%	0	0.0%	0	0.0%	0	0.0%	0	0.0%	
	Burglary	0	0.0%	3	6.7%	13	7.1%	7	3.9%	1	0.6%	0	0.0%	10	5.0%	7	3.0%	6	2.8%	
	Larceny	0	0.0%	2	4.4%	10	5.4%	8	4.5%	16	9.1%	19	10.6%	8	4.0%	13	5.5%	10	4.7%	
	Motor Vehicle Theft	0	0.0%	0	0.0%	1	0.5%	0	0.0%	5	2.8%	2	1.1%	2	1.0%	0	0.0%	1	0.5%	
	Theft by Fraud	0	0.0%	0	0.0%	1	0.5%	1	0.6%	6	3.4%	0	0.0%	1	0.5%	0	0.0%	0	0.0%	
	Stolen Property Offense	0	0.0%	0	0.0%	1	0.5%	1	0.6%	0	0.0%	0	0.0%	0	0.0%	1	0.4%	0	0.0%	
	Vandalism	0	0.0%	0	0.0%	11	6.0%	4	2.2%	5	2.8%	9	5.0%	1	0.5%	5	2.1%	6	2.8%	
	Drug Offenses	0	0.0%	0	0.0%	20	10.9%	20	11.2%	16	9.1%	16	8.9%	13	6.5%	24	10.2%	19	9.0%	
	Incest	0	0.0%	0	0.0%	0	0.0%	0	0.0%	0	0.0%	0	0.0%	0	0.0%	0	0.0%	0	0.0%	
	Statutory Rape	0	0.0%	0	0.0%	0	0.0%	0	0.0%	0	0.0%	0	0.0%	0	0.0%	0	0.0%	0	0.0%	
	Pornography	0	0.0%	0	0.0%	0	0.0%	0	0.0%	0	0.0%	0	0.0%	0	0.0%	0	0.0%	0	0.0%	
	Gambling Offenses	0	0.0%	0	0.0%	0	0.0%	0	0.0%	0	0.0%	0	0.0%	0	0.0%	0	0.0%	0	0.0%	
	Prostitution	0	0.0%	0	0.0%	0	0.0%	0	0.0%	0	0.0%	0	0.0%	0	0.0%	0	0.0%	0	0.0%	
	Bribery	0	0.0%	0	0.0%	0	0.0%	0	0.0%	0	0.0%	0	0.0%	0	0.0%	0	0.0%	0	0.0%	
Weapons Violations	0	0.0%	0	0.0%	5	2.7%	4	2.2%	0	0.0%	2	1.1%	0	0.0%	1	0.4%	0	0.0%		
Subtotal Group A		0	0.0%	5	11.1%	72	39.1%	58	32.4%	64	36.4%	56	31.3%	49	24.6%	57	24.2%	54	25.6%	
Group B	Bad Checks		0.0%	0	0.0%	11	6.0%	2	1.1%	0	0.0%	0	0.0%	5	2.5%	0	0.0%	3	1.4%	
	Curfew/Loitering		0.0%	0	0.0%	0	0.0%	6	3.4%	12	6.8%	8	4.5%	5	2.5%	12	5.1%	23	10.9%	
	Disorderly Conduct	0	0.0%	1	2.2%	6	3.3%	7	3.9%	3	1.7%	4	2.2%	5	2.5%	0	0.0%	9	4.3%	
	DUI	0	0.0%	23	51.1%	37	20.1%	26	14.5%	27	15.3%	29	16.2%	41	20.6%	16	6.8%	12	5.7%	
	Drunkness	3	100.0%	4	8.9%	5	2.7%	3	1.7%	5	2.8%	3	1.7%	3	1.5%	6	2.5%	5	2.4%	
	Family Offense	0	0.0%	2	4.4%	2	1.1%	2	1.1%	0	0.0%	0	0.0%	0	0.0%	0	0.0%	1	0.5%	
	Liquor Law Violation	0	0.0%	8	17.8%	24	13.0%	11	6.1%	22	12.5%	24	13.4%	20	10.1%	60	25.4%	33	15.6%	
	Runaway	0	0.0%	0	0.0%	10	5.4%	13	7.3%	13	7.4%	20	11.2%	22	11.1%	19	8.1%	8	3.8%	
	Trespass	0	0.0%	2	4.4%	0	0.0%	0	0.0%	1	0.6%	1	0.6%	1	0.5%	0	0.0%	1	0.5%	
	All Other Offenses	0	0.0%	0	0.0%	17	9.2%	51	28.5%	29	16.5%	34	19.0%	48	24.1%	66	28.0%	62	29.4%	
	Subtotal Group B		3	100.0%	40	88.9%	112	60.9%	121	67.6%	112	63.6%	123	68.7%	150	75.4%	179	75.8%	157	74.4%
	Total Reported Arrests		3	100.0%	45	100.0%	184	100.0%	179	100.0%	176	100.0%	179	100.0%	199	100.0%	236	100.0%	211	100.0%
Percent of Scott County Arrests			0.0%		0.6%		2.1%		2.1%		1.8%		1.7%		1.9%		2.4%		2.2%	

Offense Category	Offense	1991	%	1992	%	1993	%	1994	%	1995	%	1996	%	1997	%	1998	%	1999	%	
Le Claire Police Department																				
Group A	Murder	0	0.0%	0	0.0%	0	0.0%	0	0.0%	0	0.0%	0	0.0%	0	0.0%	0	0.0%	0	0.0%	
	Negligent Manslaughter	0	0.0%	0	0.0%	0	0.0%	0	0.0%	0	0.0%	0	0.0%	0	0.0%	0	0.0%	0	0.0%	
	Kidnaping	0	0.0%	0	0.0%	0	0.0%	0	0.0%	0	0.0%	0	0.0%	0	0.0%	0	0.0%	0	0.0%	
	Sexual Assault	3	3.6%	0	0.0%	1	0.7%	0	0.0%	0	0.0%	1	0.9%	1	0.8%	0	0.0%	0	0.0%	
	Robbery	0	0.0%	0	0.0%	0	0.0%	0	0.0%	0	0.0%	0	0.0%	0	0.0%	0	0.0%	0	0.0%	
	Aggravated Assault	1	1.2%	2	2.9%	0	0.0%	6	6.7%	1	1.4%	1	0.9%	0	0.0%	0	0.0%	0	0.0%	
	Simple Assault	6	7.2%	17	25.0%	10	7.4%	10	11.1%	2	2.7%	2	1.8%	4	3.1%	2	2.6%	3	3.9%	
	Intimidation	2	2.4%	5	7.4%	0	0.0%	1	1.1%	0	0.0%	0	0.0%	0	0.0%	0	0.0%	0	0.0%	
	Arson	0	0.0%	0	0.0%	2	1.5%	0	0.0%	0	0.0%	2	1.8%	0	0.0%	0	0.0%	0	0.0%	
	Extortion/Blackmail	0	0.0%	0	0.0%	0	0.0%	0	0.0%	0	0.0%	0	0.0%	0	0.0%	0	0.0%	0	0.0%	
	Burglary	17	20.5%	5	7.4%	22	16.3%	3	3.3%	6	8.2%	4	3.6%	0	0.0%	1	1.3%	2	2.6%	
	Larceny	4	4.8%	10	14.7%	8	5.9%	9	10.0%	2	2.7%	9	8.1%	3	2.3%	3	3.8%	4	5.3%	
	Motor Vehicle Theft	0	0.0%	3	4.4%	2	1.5%	0	0.0%	0	0.0%	0	0.0%	0	0.0%	0	0.0%	0	0.0%	
	Theft by Fraud	0	0.0%	0	0.0%	0	0.0%	0	0.0%	0	0.0%	0	0.0%	0	0.0%	0	0.0%	1	1.3%	
	Stolen Property Offense	0	0.0%	0	0.0%	0	0.0%	0	0.0%	0	0.0%	0	0.0%	0	0.0%	0	0.0%	0	0.0%	
	Vandalism	5	6.0%	4	5.9%	2	1.5%	4	4.4%	2	2.7%	0	0.0%	4	3.1%	3	3.8%	0	0.0%	
	Drug Offenses	0	0.0%	0	0.0%	2	1.5%	10	11.1%	9	12.3%	4	3.6%	1	0.8%	3	3.8%	1	1.3%	
	Incest	0	0.0%	0	0.0%	0	0.0%	0	0.0%	0	0.0%	0	0.0%	0	0.0%	0	0.0%	0	0.0%	
	Statutory Rape	0	0.0%	0	0.0%	0	0.0%	0	0.0%	0	0.0%	0	0.0%	0	0.0%	0	0.0%	0	0.0%	
	Pornography	0	0.0%	0	0.0%	0	0.0%	0	0.0%	0	0.0%	0	0.0%	0	0.0%	0	0.0%	0	0.0%	
	Gambling Offenses	0	0.0%	0	0.0%	0	0.0%	0	0.0%	0	0.0%	0	0.0%	0	0.0%	0	0.0%	0	0.0%	
	Prostitution	0	0.0%	0	0.0%	0	0.0%	0	0.0%	0	0.0%	0	0.0%	0	0.0%	0	0.0%	0	0.0%	
	Bribery	0	0.0%	0	0.0%	0	0.0%	0	0.0%	0	0.0%	0	0.0%	0	0.0%	0	0.0%	0	0.0%	
Weapons Violations	2	2.4%	0	0.0%	0	0.0%	1	1.1%	0	0.0%	0	0.0%	0	0.0%	0	0.0%	0	0.0%		
Subtotal Group A		40	48.2%	46	67.6%	49	36.3%	44	48.9%	22	30.1%	23	20.7%	13	10.0%	12	15.4%	11	14.5%	
Group B	Bad Checks	0	0.0%	0	0.0%	1	0.7%	0	0.0%	0	0.0%	0	0.0%	0	0.0%	0	0.0%	0	0.0%	
	Curfew/Loitering	2	2.4%	1	1.5%	0	0.0%	2	2.2%	15	20.5%	13	11.7%	12	9.2%	5	6.4%	10	13.2%	
	Disorderly Conduct	1	1.2%	2	2.9%	3	2.2%	0	0.0%	0	0.0%	3	2.7%	1	0.8%	0	0.0%	1	1.3%	
	DUI	19	22.9%	8	11.8%	22	16.3%	15	16.7%	1	1.4%	1	0.9%	47	36.2%	27	34.6%	31	40.8%	
	Drunkenness	5	6.0%	2	2.9%	3	2.2%	1	1.1%	1	1.4%	1	0.9%	1	0.8%	2	2.6%	2	2.6%	
	Family Offense	0	0.0%	1	1.5%	0	0.0%	0	0.0%	0	0.0%	0	0.0%	0	0.0%	0	0.0%	0	0.0%	
	Liquor Law Violation	10	12.0%	0	0.0%	26	19.3%	6	6.7%	7	9.6%	13	11.7%	28	21.5%	5	6.4%	8	10.5%	
	Runaway	1	1.2%	4	5.9%	16	11.9%	6	6.7%	0	0.0%	0	0.0%	0	0.0%	0	0.0%	0	0.0%	
	Trespass	2	2.4%	0	0.0%	0	0.0%	0	0.0%	2	2.7%	0	0.0%	0	0.0%	0	0.0%	1	1.3%	
	All Other Offenses	3	3.6%	4	5.9%	15	11.1%	16	17.8%	25	34.2%	57	51.4%	28	21.5%	27	34.6%	12	15.8%	
	Subtotal Group B		43	51.8%	22	32.4%	86	63.7%	46	51.1%	51	69.9%	88	79.3%	117	90.0%	66	84.6%	65	85.5%
	Total Reported Arrests		83	100.0%	68	100.0%	135	100.0%	90	100.0%	73	100.0%	111	100.0%	130	100.0%	78	100.0%	76	100.0%
Percent of Scott County Arrests			1.1%		0.8%		1.5%		1.0%		0.8%		1.1%		1.3%		0.8%		0.8%	

Offense Category	Offense	1991	%	1992	%	1993	%	1994	%	1995	%	1996	%	1997	%	1998	%	1999	%
Scott County Totals																			
Group A	Murder	10	0.1%	5	0.1%	14	0.2%	9	0.1%	10	0.1%	6	0.1%	4	0.0%	1	0.0%	5	0.1%
	Negligent Manslaughter	0	0.0%	0	0.0%	0	0.0%	1	0.0%	1	0.0%	1	0.0%	4	0.0%	0	0.0%	0	0.0%
	Kidnaping	0	0.0%	14	0.2%	5	0.1%	4	0.0%	4	0.0%	8	0.1%	11	0.1%	5	0.1%	4	0.0%
	Sexual Assault	65	0.8%	48	0.6%	52	0.6%	35	0.4%	35	0.4%	30	0.3%	44	0.4%	24	0.2%	37	0.4%
	Robbery	95	1.2%	104	1.3%	111	1.3%	123	1.4%	120	1.3%	92	0.9%	81	0.8%	88	0.9%	76	0.8%
	Aggravated Assault	395	5.2%	442	5.4%	491	5.6%	557	6.5%	574	6.0%	536	5.1%	533	5.2%	532	5.4%	621	6.5%
	Simple Assault	572	7.5%	517	6.3%	589	6.7%	620	7.2%	712	7.4%	818	7.8%	747	7.2%	812	8.2%	896	9.4%
	Intimidation	16	0.2%	21	0.3%	24	0.3%	22	0.3%	39	0.4%	46	0.4%	33	0.3%	41	0.4%	37	0.4%
	Arson	33	0.4%	19	0.2%	36	0.4%	30	0.3%	23	0.2%	31	0.3%	11	0.1%	15	0.2%	26	0.3%
	Extortion/Blackmail	4	0.1%	3	0.0%	0	0.0%	4	0.0%	0	0.0%	0	0.0%	1	0.0%	1	0.0%	3	0.0%
	Burglary	403	5.3%	327	4.0%	399	4.5%	346	4.0%	244	2.5%	237	2.3%	245	2.4%	261	2.6%	235	2.5%
	Larceny	1,292	16.8%	1,603	19.6%	1,549	17.6%	1,500	17.4%	1,432	14.9%	1,510	14.4%	1,453	14.1%	1,415	14.3%	1,169	12.3%
	Motor Vehicle Theft	111	1.4%	106	1.3%	120	1.4%	131	1.5%	166	1.7%	123	1.2%	107	1.0%	122	1.2%	107	1.1%
	Theft by Fraud	200	2.6%	214	2.6%	154	1.8%	129	1.5%	188	2.0%	217	2.1%	225	2.2%	237	2.4%	251	2.6%
	Stolen Property Offense	3	0.0%	11	0.1%	38	0.4%	40	0.5%	56	0.6%	51	0.5%	44	0.4%	18	0.2%	18	0.2%
	Vandalism	296	3.9%	279	3.4%	286	3.3%	281	3.3%	297	3.1%	296	2.8%	229	2.2%	281	2.8%	288	3.0%
	Drug Offenses	356	4.6%	740	9.1%	816	9.3%	799	9.3%	1,012	10.6%	1,125	10.7%	1,306	12.6%	970	9.8%	852	9.0%
	Incest	4	0.1%	1	0.0%	0	0.0%	1	0.0%	1	0.0%	0	0.0%	0	0.0%	0	0.0%	3	0.0%
	Statutory Rape	5	0.1%	2	0.0%	7	0.1%	3	0.0%	7	0.1%	7	0.1%	2	0.0%	3	0.0%	9	0.1%
	Pornography	0	0.0%	1	0.0%	3	0.0%	0	0.0%	0	0.0%	0	0.0%	0	0.0%	3	0.0%	0	0.0%
	Gambling Offenses	0	0.0%	6	0.1%	0	0.0%	0	0.0%	0	0.0%	0	0.0%	0	0.0%	0	0.0%	0	0.0%
	Prostitution	80	1.0%	85	1.0%	86	1.0%	94	1.1%	93	1.0%	63	0.6%	136	1.3%	90	0.9%	77	0.8%
	Bribery	0	0.0%	0	0.0%	0	0.0%	0	0.0%	0	0.0%	0	0.0%	0	0.0%	0	0.0%	0	0.0%
Weapons Violations	70	0.9%	70	0.9%	109	1.2%	127	1.5%	127	1.3%	73	0.7%	70	0.7%	96	1.0%	64	0.7%	
Subtotal Group A	4,010	52.3%	4,618	56.5%	4,889	55.6%	4,856	56.4%	5,141	53.6%	5,270	50.2%	5,286	51.1%	5,015	50.8%	4,778	50.3%	
Group B	Bad Checks	22	0.3%	23	0.3%	41	0.5%	26	0.3%	5	0.1%	11	0.1%	13	0.1%	15	0.2%	18	0.2%
	Curfew/Loitering	24	0.3%	30	0.4%	12	0.1%	84	1.0%	163	1.7%	131	1.2%	115	1.1%	132	1.3%	113	1.2%
	Disorderly Conduct	273	3.6%	274	3.4%	293	3.3%	233	2.7%	275	2.9%	334	3.2%	258	2.5%	295	3.0%	296	3.1%
	DUI	959	12.5%	738	9.0%	798	9.1%	688	8.0%	655	6.8%	824	7.9%	776	7.5%	655	6.6%	722	7.6%
	Drunkennes	251	3.3%	198	2.4%	273	3.1%	176	2.0%	271	2.8%	277	2.6%	244	2.4%	209	2.1%	232	2.4%
	Family Offense	13	0.2%	9	0.1%	5	0.1%	8	0.1%	8	0.1%	9	0.1%	4	0.0%	11	0.1%	11	0.1%
	Liquor Law Violation	334	4.4%	311	3.8%	433	4.9%	372	4.3%	483	5.0%	657	6.3%	647	6.3%	744	7.5%	778	8.2%
	Runaway	104	1.4%	141	1.7%	165	1.9%	138	1.6%	166	1.7%	162	1.5%	159	1.5%	72	0.7%	8	0.1%
	Trespass	166	2.2%	217	2.7%	229	2.6%	138	1.6%	178	1.9%	228	2.2%	185	1.8%	178	1.8%	185	1.9%
	All Other Offenses	1,512	19.7%	1,612	19.7%	1,658	18.8%	1,887	21.9%	2,243	23.4%	2,587	24.7%	2,654	25.7%	2,542	25.8%	2,360	24.8%
	Subtotal Group B	3,658	47.7%	3,553	43.5%	3,907	44.4%	3,750	43.6%	4,447	46.4%	5,220	49.8%	5,055	48.9%	4,853	49.2%	4,723	49.7%
	Total Reported Arrests	7,668	100.0%	8,171	100.0%	8,796	100.0%	8,606	100.0%	9,588	100.0%	10,490	100.0%	10,341	100.0%	9,868	100.0%	9,501	100.0%

**Scott County Community Jail and Alternatives Phase One Study
Appendix D. Group A and B Arrest Rates by Jurisdiction**

Appendix D. Group A and B Arrest Rates by Jurisdiction

Table D.1 Arrest Rates per 100,000 Residents for Group A and Group B Offenses (1991 - 1999)

Offense Category	Offense	1991	1992	1993	1994	1995	1996	1997	1998	1999
Scott County Sheriff's Office/Population		21,712	21,712	21,712	21,827	21,725	21,801	21,801	22,683	23,210
Group A	Murder	0.0	9.2	18.4	4.6	0.0	0.0	0.0	0.0	0.0
	Negligent Manslaughter	0.0	0.0	0.0	0.0	0.0	0.0	0.0	0.0	0.0
	Kidnaping	0.0	0.0	0.0	0.0	0.0	0.0	0.0	4.4	0.0
	Sexual Assault	9.2	13.8	13.8	13.7	13.8	0.0	0.0	8.8	4.3
	Robbery	0.0	9.2	18.4	13.7	23.0	4.6	0.0	0.0	4.3
	Aggravated Assault	92.1	105.9	124.4	123.7	147.3	197.2	183.5	127.8	133.6
	Simple Assault	211.9	152.0	211.9	169.5	165.7	201.8	229.3	163.1	189.6
	Intimidation	0.0	0.0	0.0	0.0	0.0	0.0	0.0	0.0	0.0
	Arson	0.0	0.0	23.0	0.0	0.0	0.0	0.0	0.0	12.9
	Extortion/Blackmail	0.0	0.0	0.0	4.6	0.0	0.0	0.0	0.0	0.0
	Burglary	78.3	115.1	82.9	91.6	27.6	45.9	9.2	57.3	30.2
	Larceny	41.5	142.8	207.3	91.6	184.1	256.9	197.2	119.0	116.3
	Motor Vehicle Theft	27.6	9.2	36.8	0.0	9.2	9.2	13.8	4.4	4.3
	Theft by Fraud	73.7	55.3	82.9	36.7	18.4	9.2	0.0	0.0	4.3
	Stolen Property Offense	0.0	0.0	9.2	0.0	0.0	0.0	0.0	0.0	0.0
	Vandalism	46.1	36.8	55.3	64.1	4.6	123.8	22.9	39.7	21.5
	Drug Offenses	202.7	368.5	184.2	146.6	193.3	233.9	174.3	202.8	271.4
	Incest	0.0	0.0	0.0	0.0	0.0	0.0	0.0	0.0	0.0
	Statutory Rape	0.0	0.0	0.0	0.0	0.0	0.0	0.0	0.0	0.0
	Pornography	0.0	0.0	0.0	0.0	0.0	0.0	0.0	0.0	0.0
Gambling Offenses	0.0	0.0	0.0	0.0	0.0	0.0	0.0	0.0	0.0	
Prostitution	0.0	4.6	9.2	0.0	0.0	0.0	0.0	0.0	0.0	
Bribery	0.0	0.0	0.0	0.0	0.0	0.0	0.0	0.0	0.0	
Weapons Violations	32.2	13.8	27.6	18.3	18.4	9.2	13.8	13.2	4.3	
SCSO Group A		815.2	1,036.3	1,105.4	778.9	805.5	1,091.7	844.0	740.6	797.1
Group B	Bad Checks	0.0	0.0	0.0	4.6	0.0	0.0	0.0	0.0	0.0
	Curfew/Loitering	0.0	0.0	0.0	0.0	0.0	0.0	0.0	0.0	0.0
	Disorderly Conduct	55.3	36.8	124.4	27.5	41.4	50.5	45.9	26.5	73.2
	DUI	1,404.8	727.7	778.4	710.1	649.0	821.1	701.8	930.2	995.3
	Drunkenness	188.8	92.1	64.5	32.1	82.9	73.4	105.5	70.5	94.8
	Family Offense	4.6	0.0	4.6	4.6	4.6	0.0	0.0	4.4	0.0
	Liquor Law Violation	313.2	409.9	368.5	517.7	313.0	233.9	224.8	559.9	439.5
	Runaway	0.0	0.0	0.0	0.0	0.0	0.0	0.0	0.0	0.0
	Trespass	55.3	41.5	73.7	27.5	23.0	27.5	45.9	57.3	25.9
	All Other Offenses	3,127.3	3,247.1	3,638.5	4,544.8	5,330.3	7,031.8	6,811.6	6,643.7	6,212.8
SCSO Group B		5,149.2	4,555.1	5,052.5	5,868.9	6,444.2	8,238.2	7,935.4	8,292.6	7,841.4
SCSO Total		5,964.4	5,591.4	6,157.9	6,647.7	7,249.7	9,329.8	8,779.4	9,033.2	8,638.5

**Scott County Community Jail and Alternatives Phase One Study
Appendix D. Group A and B Arrest Rates by Jurisdiction**

Offense Category	Offense	1991	1992	1993	1994	1995	1996	1997	1998	1999
Bettendorf Police Department/Population		29,698	29,698	29,698	29,698	29,698	29,698	29,698	29,698	29,698
Group A	Murder	0.0	0.0	0.0	0.0	9.2	0.0	0.0	0.0	0.0
	Negligent Manslaughter	0.0	0.0	0.0	0.0	0.0	0.0	0.0	0.0	0.0
	Kidnaping	0.0	4.6	4.6	9.2	0.0	0.0	22.9	0.0	0.0
	Sexual Assault	18.4	9.2	36.8	4.6	13.8	0.0	27.5	17.6	8.6
	Robbery	9.2	23.0	59.9	13.7	4.6	13.8	18.3	17.6	43.1
	Aggravated Assault	179.6	119.7	304.0	302.4	414.3	261.5	211.0	189.6	206.8
	Simple Assault	313.2	179.6	198.0	343.6	308.4	371.5	522.9	405.6	413.6
	Intimidation	4.6	4.6	23.0	41.2	27.6	36.7	27.5	35.3	12.9
	Arson	32.2	4.6	32.2	13.7	18.4	50.5	22.9	26.5	38.8
	Extortion/Blackmail	0.0	4.6	0.0	13.7	0.0	0.0	4.6	0.0	8.6
	Burglary	211.9	175.0	105.9	155.8	87.5	192.7	160.5	88.2	73.2
	Larceny	861.3	1,308.0	1,128.4	1,095.0	1,127.7	1,206.4	1,128.4	1,005.2	766.9
	Motor Vehicle Theft	36.8	13.8	27.6	110.0	82.9	41.3	73.4	66.1	51.7
	Theft by Fraud	92.1	105.9	124.4	169.5	174.9	174.3	156.0	185.2	142.2
	Stolen Property Offense	9.2	36.8	59.9	32.1	170.3	146.8	123.8	52.9	30.2
	Vandalism	101.3	119.7	142.8	224.5	368.2	284.4	174.3	202.8	185.3
	Drug Offenses	138.2	257.9	377.7	572.7	727.3	724.7	642.2	498.2	542.9
	Incest	4.6	0.0	0.0	0.0	4.6	0.0	0.0	0.0	0.0
	Statutory Rape	4.6	4.6	4.6	4.6	0.0	4.6	0.0	0.0	4.3
	Pornography	0.0	0.0	4.6	0.0	0.0	0.0	0.0	0.0	0.0
	Gambling Offenses	0.0	0.0	0.0	0.0	0.0	0.0	0.0	0.0	0.0
	Prostitution	0.0	0.0	0.0	4.6	9.2	0.0	55.0	8.8	0.0
	Bribery	0.0	0.0	0.0	0.0	0.0	0.0	0.0	0.0	0.0
Weapons Violations	27.6	18.4	36.8	45.8	110.5	36.7	55.0	26.5	38.8	
Bettendorf Group A		2,045.0	2,390.4	2,671.3	3,156.6	3,659.4	3,545.7	3,426.4	2,825.9	2,567.9
Group B	Bad Checks	27.6	23.0	46.1	18.3	0.0	0.0	0.0	4.4	0.0
	Curfew/Loitering	0.0	0.0	4.6	316.1	538.6	339.4	339.4	383.5	301.6
	Disorderly Conduct	138.2	87.5	179.6	110.0	87.5	110.1	96.3	110.2	237.0
	DUI	741.5	792.2	617.2	494.8	653.6	651.3	596.3	581.9	633.3
	Drunkenness	69.1	73.7	101.3	59.6	87.5	119.3	87.2	136.7	168.0
	Family Offense	0.0	0.0	0.0	9.2	4.6	13.8	0.0	8.8	8.6
	Liquor Law Violation	276.3	253.3	414.5	449.0	939.0	1,403.6	1,417.4	1,327.0	1,732.0
	Runaway	474.4	621.8	635.6	545.2	704.3	646.8	628.4	233.7	0.0
	Trespass	64.5	142.8	152.0	77.9	188.7	169.7	137.6	83.8	124.9
	All Other Offenses	649.4	552.7	690.9	733.0	672.0	871.5	1,233.9	1,150.6	913.4
	Bettendorf Group B		2,441.0	2,547.0	2,841.7	2,813.0	3,875.7	4,325.5	4,536.5	4,020.6
Bettendorf Total		4,486.0	4,937.4	5,513.1	5,969.7	7,535.1	7,871.2	7,962.9	6,846.5	6,686.8

**Scott County Community Jail and Alternatives Phase One Study
Appendix D. Group A and B Arrest Rates by Jurisdiction**

Offense Category	Offense	1991	1992	1993	1994	1995	1996	1997	1998	1999
Davenport Police Department/Population		97,890	97,890	97,890	98,411	97,410	97,752	97,752	97,651	97,078
Group A	Murder	46.1	13.8	46.1	36.7	36.8	27.5	18.3	4.4	21.5
	Negligent Manslaughter	0.0	0.0	0.0	4.6	4.6	4.6	18.3	0.0	0.0
	Kidnaping	0.0	59.9	18.4	9.2	18.4	36.7	27.5	17.6	17.2
	Sexual Assault	257.9	198.0	184.2	142.0	128.9	133.0	169.7	74.9	137.9
	Robbery	428.3	446.8	432.9	536.0	524.7	403.7	353.2	370.3	275.7
	Aggravated Assault	1,542.9	1,800.8	1,828.5	2,093.7	2,066.7	1,995.3	2,036.6	2,023.5	2,335.2
	Simple Assault	2,081.8	1,971.3	2,233.8	2,240.3	2,748.0	3,137.5	2,605.4	2,984.6	3,205.5
	Intimidation	59.9	69.1	82.9	41.2	142.7	169.7	123.8	145.5	146.5
	Arson	119.7	82.9	87.5	123.7	87.5	82.6	27.5	39.7	60.3
	Extortion/Blackmail	18.4	9.2	0.0	0.0	0.0	0.0	0.0	4.4	4.3
	Burglary	1,487.7	1,179.1	1,487.7	1,292.0	975.8	830.2	908.2	969.9	874.6
	Larceny	5,029.5	5,876.9	5,715.7	5,607.7	5,196.8	5,334.6	5,288.7	5,043.4	4,093.1
	Motor Vehicle Theft	446.8	451.4	474.4	490.2	649.0	504.6	394.5	467.3	400.7
	Theft by Fraud	755.3	824.4	497.4	380.3	644.4	811.9	871.5	859.7	930.6
	Stolen Property Offense	4.6	13.8	101.3	146.6	87.5	87.2	78.0	22.0	47.4
	Vandalism	1,192.9	1,110.0	1,059.3	962.1	962.0	908.2	830.2	961.1	1,008.2
	Drug Offenses	1,298.8	2,781.9	3,095.1	2,803.9	3,622.6	4,109.9	5,109.9	3,456.3	2,770.4
	Incest	13.8	4.6	0.0	4.6	0.0	0.0	0.0	0.0	12.9
	Statutory Rape	18.4	4.6	27.6	9.2	32.2	27.5	9.2	13.2	34.5
	Pornography	0.0	4.6	9.2	0.0	0.0	0.0	0.0	13.2	0.0
	Gambling Offenses	0.0	27.6	0.0	0.0	0.0	0.0	0.0	0.0	0.0
	Prostitution	368.5	386.9	386.9	426.1	418.9	289.0	568.8	388.0	331.8
Bribery	0.0	0.0	0.0	0.0	0.0	0.0	0.0	0.0	0.0	
Weapons Violations	253.3	290.2	414.5	494.8	455.7	279.8	252.3	379.1	232.7	
Davenport Group A		15,424.6	17,607.8	18,183.5	17,844.9	18,803.2	19,173.4	19,691.8	18,238.3	16,941.0
Group B	Bad Checks	73.7	82.9	87.5	87.0	23.0	50.5	36.7	61.7	64.6
	Curfew/Loitering	101.3	133.6	50.7	32.1	87.5	165.1	110.1	123.4	43.1
	Disorderly Conduct	1,059.3	1,123.8	1,004.1	898.0	1,123.1	1,339.4	1,013.7	1,163.9	922.0
	DUI	2,183.1	1,736.4	2,008.1	1,759.3	1,583.4	2,169.6	1,857.7	1,185.9	1,296.9
	Drunkenness	861.3	718.5	1,054.7	696.4	1,049.5	1,059.6	908.2	678.9	706.6
	Family Offense	55.3	27.6	9.2	13.7	27.6	27.5	18.3	35.3	34.5
	Liquor Law Violation	902.7	732.3	981.0	659.7	837.7	1,206.4	1,105.5	1,106.6	1,003.9
	Runaway	0.0	9.2	4.6	0.0	0.0	4.6	0.0	0.0	0.0
	Trespass	635.6	806.0	829.0	526.9	593.8	844.0	660.5	643.7	637.7
	All Other Offenses	3,173.4	3,606.3	3,159.5	3,060.4	4,073.6	3,545.7	3,779.6	3,002.2	2,723.0
	Davenport Group B		9,045.7	8,976.6	9,188.5	7,733.5	9,399.3	10,412.4	9,490.4	8,001.6
Davenport Total		24,470.3	26,584.4	27,372.0	25,578.4	28,202.5	29,585.8	29,182.1	26,239.9	24,373.1

**Scott County Community Jail and Alternatives Phase One Study
Appendix D. Group A and B Arrest Rates by Jurisdiction**

Offense Category	Offense	1991	1992	1993	1994	1995	1996	1997	1998	1999
Eldridge Police Department/Population		3,567	3,567	3,567	3,586	3,730	3,743	3,743	3,720	3,948
Group A	Murder	0.0	0.0	0.0	0.0	0.0	0.0	0.0	0.0	0.0
	Negligent Manslaughter	0.0	0.0	0.0	0.0	0.0	0.0	0.0	0.0	0.0
	Kidnaping	0.0	0.0	0.0	0.0	0.0	0.0	0.0	0.0	0.0
	Sexual Assault	0.0	0.0	0.0	0.0	4.6	0.0	0.0	4.4	8.6
	Robbery	0.0	0.0	0.0	0.0	0.0	0.0	0.0	0.0	4.3
	Aggravated Assault	0.0	0.0	4.6	4.6	9.2	0.0	13.8	4.4	0.0
	Simple Assault	0.0	0.0	23.0	41.2	46.0	32.1	50.5	17.6	38.8
	Intimidation	0.0	0.0	4.6	13.7	9.2	4.6	0.0	0.0	0.0
	Arson	0.0	0.0	13.8	0.0	0.0	0.0	0.0	0.0	0.0
	Extortion/Blackmail	0.0	0.0	0.0	0.0	0.0	0.0	0.0	0.0	0.0
	Burglary	0.0	13.8	59.9	32.1	4.6	0.0	45.9	30.9	25.9
	Larceny	0.0	9.2	46.1	36.7	73.6	87.2	36.7	57.3	43.1
	Motor Vehicle Theft	0.0	0.0	4.6	0.0	23.0	9.2	9.2	0.0	4.3
	Theft by Fraud	0.0	0.0	4.6	4.6	27.6	0.0	4.6	0.0	0.0
	Stolen Property Offense	0.0	0.0	4.6	4.6	0.0	0.0	0.0	4.4	0.0
	Vandalism	0.0	0.0	50.7	18.3	23.0	41.3	4.6	22.0	25.9
	Drug Offenses	0.0	0.0	92.1	91.6	73.6	73.4	59.6	105.8	81.9
	Incest	0.0	0.0	0.0	0.0	0.0	0.0	0.0	0.0	0.0
	Statutory Rape	0.0	0.0	0.0	0.0	0.0	0.0	0.0	0.0	0.0
	Pornography	0.0	0.0	0.0	0.0	0.0	0.0	0.0	0.0	0.0
	Gambling Offenses	0.0	0.0	0.0	0.0	0.0	0.0	0.0	0.0	0.0
Prostitution	0.0	0.0	0.0	0.0	0.0	0.0	0.0	0.0	0.0	
Bribery	0.0	0.0	0.0	0.0	0.0	0.0	0.0	0.0	0.0	
Weapons Violations	0.0	0.0	23.0	18.3	0.0	9.2	0.0	4.4	0.0	
Eldridge Group A		0.0	23.0	331.6	265.7	294.6	256.9	224.8	251.3	232.7
Group B	Bad Checks	0.0	0.0	50.7	9.2	0.0	0.0	22.9	0.0	12.9
	Curfew/Loitering	0.0	0.0	0.0	27.5	55.2	36.7	22.9	52.9	99.1
	Disorderly Conduct	0.0	4.6	27.6	32.1	13.8	18.3	22.9	0.0	38.8
	DUI	0.0	105.9	170.4	119.1	124.3	133.0	188.1	70.5	51.7
	Drunkenness	13.8	18.4	23.0	13.7	23.0	13.8	13.8	26.5	21.5
	Family Offense	0.0	9.2	9.2	9.2	0.0	0.0	0.0	0.0	4.3
	Liquor Law Violation	0.0	36.8	110.5	50.4	101.3	110.1	91.7	264.5	142.2
	Runaway	0.0	0.0	46.1	59.6	59.8	91.7	100.9	83.8	34.5
	Trespass	0.0	9.2	0.0	0.0	4.6	4.6	4.6	0.0	4.3
	All Other Offenses	0.0	0.0	78.3	233.7	133.5	156.0	220.2	291.0	267.1
	Eldridge Group B		13.8	184.2	515.8	554.4	515.5	564.2	688.0	789.1
Eldridge Total		13.8	207.3	847.5	820.1	810.1	821.1	912.8	1,040.4	909.1

**Scott County Community Jail and Alternatives Phase One Study
Appendix D. Group A and B Arrest Rates by Jurisdiction**

Offense Category	Offense	1991	1992	1993	1994	1995	1996	1997	1998	1999
Le Claire Police	Department	2,948	2,948	2,948	2,963	3,020	3,030	3,030	2,711	2,927
Group A	Murder	0.0	0.0	0.0	0.0	0.0	0.0	0.0	0.0	0.0
	Negligent Manslaughter	0.0	0.0	0.0	0.0	0.0	0.0	0.0	0.0	0.0
	Kidnaping	0.0	0.0	0.0	0.0	0.0	0.0	0.0	0.0	0.0
	Sexual Assault	13.8	0.0	4.6	0.0	0.0	4.6	4.6	0.0	0.0
	Robbery	0.0	0.0	0.0	0.0	0.0	0.0	0.0	0.0	0.0
	Aggravated Assault	4.6	9.2	0.0	27.5	4.6	4.6	0.0	0.0	0.0
	Simple Assault	27.6	78.3	46.1	45.8	9.2	9.2	18.3	8.8	12.9
	Intimidation	9.2	23.0	0.0	4.6	0.0	0.0	0.0	0.0	0.0
	Arson	0.0	0.0	9.2	0.0	0.0	9.2	0.0	0.0	0.0
	Extortion/Blackmail	0.0	0.0	0.0	0.0	0.0	0.0	0.0	0.0	0.0
	Burglary	78.3	23.0	101.3	13.7	27.6	18.3	0.0	4.4	8.6
	Larceny	18.4	46.1	36.8	41.2	9.2	41.3	13.8	13.2	17.2
	Motor Vehicle Theft	0.0	13.8	9.2	0.0	0.0	0.0	0.0	0.0	0.0
	Theft by Fraud	0.0	0.0	0.0	0.0	0.0	0.0	0.0	0.0	4.3
	Stolen Property Offense	0.0	0.0	0.0	0.0	0.0	0.0	0.0	0.0	0.0
	Vandalism	23.0	18.4	9.2	18.3	9.2	0.0	18.3	13.2	0.0
	Drug Offenses	0.0	0.0	9.2	45.8	41.4	18.3	4.6	13.2	4.3
	Incest	0.0	0.0	0.0	0.0	0.0	0.0	0.0	0.0	0.0
	Statutory Rape	0.0	0.0	0.0	0.0	0.0	0.0	0.0	0.0	0.0
	Pornography	0.0	0.0	0.0	0.0	0.0	0.0	0.0	0.0	0.0
	Gambling Offenses	0.0	0.0	0.0	0.0	0.0	0.0	0.0	0.0	0.0
	Prostitution	0.0	0.0	0.0	0.0	0.0	0.0	0.0	0.0	0.0
Bribery	0.0	0.0	0.0	0.0	0.0	0.0	0.0	0.0	0.0	
Weapons Violations	9.2	0.0	0.0	4.6	0.0	0.0	0.0	0.0	0.0	
LeClaire Group A		184.2	211.9	225.7	201.6	101.3	105.5	59.6	52.9	47.4
Group B	Bad Checks	0.0	0.0	4.6	0.0	0.0	0.0	0.0	0.0	0.0
	Curfew/Loitering	9.2	4.6	0.0	9.2	69.0	59.6	55.0	22.0	43.1
	Disorderly Conduct	4.6	9.2	13.8	0.0	0.0	13.8	4.6	0.0	4.3
	DUI	87.5	36.8	101.3	68.7	4.6	4.6	215.6	119.0	133.6
	Drunkenness	23.0	9.2	13.8	4.6	4.6	4.6	4.6	8.8	8.6
	Family Offense	0.0	4.6	0.0	0.0	0.0	0.0	0.0	0.0	0.0
	Liquor Law Violation	46.1	0.0	119.7	27.5	32.2	59.6	128.4	22.0	34.5
	Runaway	4.6	18.4	73.7	27.5	0.0	0.0	0.0	0.0	0.0
	Trespass	9.2	0.0	0.0	0.0	9.2	0.0	0.0	0.0	4.3
	All Other Offenses	13.8	18.4	69.1	73.3	115.1	261.5	128.4	119.0	51.7
	LeClaire Group B		198.0	101.3	396.1	210.7	234.8	403.7	536.7	291.0
LeClaire Total		382.3	313.2	621.8	412.3	336.0	509.2	596.3	343.9	327.4

**Scott County Community Jail and Alternatives Phase One Study
Appendix D. Group A and B Arrest Rates by Jurisdiction**

Offense Category	Offense	1991	1992	1993	1994	1995	1996	1997	1998	1999
Scott County Totals		155,815	155,815	155,815	156,485	155,583	156,024	156,024	156,463	156,861
Group A	Murder	6.4	3.2	9.0	5.7	6.4	3.8	2.5	0.6	3.1
	Negligent Manslaughter	0.0	0.0	0.0	0.6	0.6	0.6	2.5	0.0	0.0
	Kidnaping	0.0	9.0	3.2	2.6	2.6	5.1	7.0	3.2	2.5
	Sexual Assault	41.7	30.8	33.4	22.3	22.3	19.1	28.0	15.2	23.3
	Robbery	61.0	66.7	71.2	78.5	76.6	58.5	51.5	55.7	47.8
	Aggravated Assault	253.5	283.7	315.1	355.6	366.4	340.9	339.0	336.7	390.6
	Simple Assault	367.1	331.8	378.0	395.8	454.5	520.3	475.1	514.0	563.6
	Intimidation	10.3	13.5	15.4	14.0	24.9	29.3	21.0	26.0	23.3
	Arson	21.2	12.2	23.1	19.2	14.7	19.7	7.0	9.5	16.4
	Extortion/Blackmail	2.6	1.9	0.0	2.6	0.0	0.0	0.6	0.6	1.9
	Burglary	258.6	209.9	256.1	220.9	155.7	150.7	155.8	165.2	147.8
	Larceny	829.2	1,028.8	994.1	957.6	914.1	960.5	924.2	895.7	735.3
	Motor Vehicle Theft	71.2	68.0	77.0	83.6	106.0	78.2	68.1	77.2	67.3
	Theft by Fraud	128.4	137.3	98.8	82.4	120.0	138.0	143.1	150.0	157.9
	Stolen Property Offense	1.9	7.1	24.4	25.5	35.7	32.4	28.0	11.4	11.3
	Vandalism	190.0	179.1	183.6	179.4	189.6	188.3	145.7	177.9	181.2
	Drug Offenses	228.5	474.9	523.7	510.1	646.0	715.6	830.7	614.0	535.9
	Incest	2.6	0.6	0.0	0.6	0.6	0.0	0.0	13.2	1.9
	Statutory Rape	3.2	1.3	4.5	1.9	4.5	4.5	1.3	1.9	5.7
	Pornography	0.0	0.6	1.9	0.0	0.0	0.0	0.0	1.9	0.0
	Gambling Offenses	0.0	3.9	0.0	0.0	0.0	0.0	0.0	0	0.0
	Prostitution	51.3	54.6	55.2	60.0	59.4	40.1	86.5	57.0	48.4
	Bribery	0.0	0.0	0.0	0.0	0.0	0.0	0.0	0.0	0.0
Weapons Violations	44.9	44.9	70.0	81.1	81.1	46.4	44.5	60.8	40.3	
County Group A		2,573.6	2,963.8	3,137.7	3,100.0	3,281.5	3,352.1	3,362.7	3,174.4	3,005.5
Group B	Bad Checks	14.1	14.8	26.3	16.6	3.2	7.0	8.3	9.5	11.3
	Curfew/Loitering	15.4	19.3	7.7	53.6	104.0	83.3	73.1	83.6	71.1
	Disorderly Conduct	175.2	175.8	188.0	148.7	175.5	212.4	164.1	186.7	186.2
	DUI	617.4	473.6	512.1	439.2	418.1	524.1	493.6	414.6	454.2
	Drunkenness	159.2	127.1	175.2	112.4	173.0	176.2	155.2	132.3	145.9
	Family Offense	8.3	5.8	3.2	5.1	5.1	5.7	2.5	7.0	6.9
	Liquor Law Violation	214.4	199.6	277.9	237.5	308.3	417.9	411.5	470.9	489.4
	Runaway	66.7	90.5	105.9	88.1	106.0	103.0	101.1	45.6	5.0
	Trespass	106.5	139.3	147.0	88.1	113.6	145.0	117.7	112.7	116.4
	All Other Offenses	970.4	1,034.6	1,064.1	1,204.7	1,431.7	1,645.5	1,688.1	1,609.0	1,484.5
	County Group B		2,347.7	2,280.3	2,507.5	2,394.0	2,838.5	3,320.3	3,215.4	3,071.8
County Total		4,921.2	5,244.0	5,645.2	5,494.0	6,120.1	6,672.4	6,577.7	6,246.2	5,976.3

**Scott County Community Jail and Alternatives Phase One Study
Appendix E. Monthly Trend in Average Daily Population**

Appendix E. Monthly Trend in Average Daily Population

Statistic	Jan	Feb	Mar	Apr	May	Jun	Jul	Aug	Sep	Oct	Nov	Dec
93												
Total							168.43	162.23	177.14	180.48	181.62	176.82
Pretrial							127.53	120.08	132.29	142.48	147.66	141.71
Sentenced							41.07	42.15	44.71	37.86	33.93	35.11
Felony							107.30	107.92	120.86	124.29	135.79	129.75
Misdemeanor							61.30	54.31	56.29	56.19	45.83	47.00
Adult Males							140.30	129.96	142.43	144.33	147.72	151.11
Adult Females							18.83	21.96	23.57	26.05	26.48	19.64
Juvenile Males							9.83	10.31	11.14	10.33	7.52	6.50
Juvenile Females							0.00	0.00	0.00	0.00	0.00	0.00
White							79.47	71.08	83.21	82.81	74.72	75.04
Black							76.83	80.31	85.14	90.71	100.66	96.14
Hispanic							9.07	9.85	7.79	7.48	6.17	5.79
Indian							0.00	0.00	0.00	0.00	0.00	0.00
Asian							1.20	0.96	1.00	0.33	0.03	0.04
Other							0.00	0.08	0.00	0.00	0.00	0.00
Work Release							1.33	3.27	3.07	2.19	1.76	3.96
Total OWI							24.57	19.15	23.36	17.24	9.62	8.00
Probation Viol							28.57	27.58	33.79	34.71	38.59	40.29
94												
Total	184.10	173.36	168.29	158.53	181.77	182.90	198.65	196.74	216.00	224.48	208.97	190.31
Pretrial	140.87	133.71	128.61	117.93	130.23	136.10	153.16	161.39	170.03	171.00	163.77	148.77
Sentenced	43.43	39.93	39.68	40.90	51.55	46.77	45.74	35.23	46.47	53.00	45.60	41.54
Felony	130.03	120.29	109.68	99.00	112.19	125.83	142.19	141.87	154.63	155.29	147.80	137.46
Misdemeanor	54.20	52.82	58.61	59.53	69.61	57.07	56.74	54.74	68.40	68.45	61.27	53.08
Adult Males	157.80	147.54	140.61	133.77	149.19	151.73	165.16	167.26	181.67	187.29	170.60	163.31
Adult Females	19.83	17.39	18.58	17.87	26.81	27.47	29.94	24.55	29.17	30.52	27.00	18.69
Juvenile Males	6.63	9.36	9.39	6.97	6.61	5.30	3.90	4.26	5.33	6.87	10.20	9.23
Juvenile Females	0.00	0.00	0.00	0.00	0.00	0.00	0.00	0.87	0.30	0.00	0.83	0.31
White	80.37	80.25	85.94	81.60	95.71	93.43	91.97	81.97	101.00	110.58	98.90	90.38
Black	97.43	89.11	78.58	67.70	74.45	74.00	86.19	92.35	92.97	96.77	94.40	86.38
Hispanic	6.10	7.43	3.81	9.23	11.61	15.17	19.77	20.74	20.60	15.48	14.27	8.92
Indian	0.00	0.00	0.00	0.00	0.00	0.00	0.00	0.00	0.00	0.00	0.00	0.00
Asian	0.00	0.00	0.00	0.00	0.10	0.53	0.74	1.68	1.73	1.13	2.03	2.15
Other	0.00	0.00	0.00	0.00	0.00	0.00	0.00	0.00	0.00	0.00	0.00	0.00
Work Release	6.07	4.21	2.77	4.20	3.35	1.47	3.19	2.45	4.97	5.13	4.17	1.46
Total OWI	14.57	12.14	10.65	8.17	9.23	9.60	15.06	7.65	11.03	13.39	11.17	30.54
Probation Viol	31.03	24.43	21.35	28.67	34.87	42.53	39.39	35.39	41.07	45.16	41.40	44.08
95												
Total	193.06	201.50	216.26	205.00	205.65	206.63	218.00	228.97	211.20	210.52	215.00	229.69
Pretrial	142.35	153.89	151.21	156.13	161.06	156.30	162.39	173.33	157.43	159.68	169.97	175.52
Sentenced	50.71	47.61	65.05	48.87	44.58	50.33	55.61	55.63	53.77	50.84	45.03	54.17
Felony	130.68	143.00	146.74	113.00	112.00	113.33	114.84	159.83	116.33	154.84	126.70	138.34

**Scott County Community Jail and Alternatives Phase One Study
Appendix E. Monthly Trend in Average Daily Population**

Statistic	Jan	Feb	Mar	Apr	May	Jun	Jul	Aug	Sep	Oct	Nov	Dec
Misdemeanor	62.42	58.43	69.47	92.00	93.65	93.30	99.61	105.80	94.87	91.16	88.30	91.34
Adult Males	154.97	163.25	176.63	159.33	161.35	157.63	166.19	180.00	162.80	168.84	175.40	184.62
Adult Females	30.03	29.93	28.63	36.33	34.03	38.07	40.29	36.80	44.47	31.81	31.23	33.07
Juvenile Males	8.71	9.04	11.00	9.33	9.94	8.63	9.06	9.73	11.43	8.32	5.53	8.97
Juvenile Females	0.00	0.00	0.00	0.00	0.26	1.13	0.77	0.23	0.00	0.84	1.80	2.00
White	96.81	99.39	113.58	97.90	95.29	101.50	108.26	110.40	107.60	110.19	111.53	113.69
Black	87.32	88.89	88.89	97.13	97.77	93.43	99.32	106.37	92.53	88.61	86.30	96.41
Hispanic	6.48	10.39	11.74	6.83	9.81	9.97	9.77	11.47	10.07	10.13	14.40	16.28
Indian	0.00	0.00	0.00	2.07	1.61	1.00	0.58	0.10	1.00	1.52	2.57	2.38
Asian	2.35	2.29	2.00	1.07	1.16	0.73	0.06	0.63	0.00	0.00	0.20	0.90
Other	0.00	0.07	0.00	0.00	0.00	0.00	0.00	0.00	0.00	0.06	0.00	0.03
Work Release	3.32	2.14	3.79	1.67	1.65	1.57	1.90	1.10	4.33	4.32	2.53	2.10
Total OWI	16.77	13.39	11.58	0.00	0.00	0.00	0.00	0.00	0.00	0.00	0.00	0.00
Probation Viol	39.77	45.71	45.95	0.00	0.00	0.00	0.00	0.00	0.00	0.00	0.00	0.00
96												
Total	241.46	234.10	248.97	250.47	233.08	222.27	234.77	245.83	242.40	227.94	234.27	207.65
Pretrial	186.69	172.69	177.81	175.87	175.96	167.30	167.00	171.37	161.23	156.45	176.80	162.16
Sentenced	54.77	61.41	71.16	64.60	57.12	54.97	67.77	74.47	81.17	71.48	57.47	45.48
Felony	148.54	142.38	144.03	136.40	129.17	127.07	118.80	127.60	129.33	126.87	136.90	128.32
Misdemeanor	92.92	91.72	104.94	104.07	103.92	95.20	115.97	118.23	113.07	101.06	97.37	79.32
Adult Males	194.23	188.86	203.26	205.67	195.88	178.57	190.47	201.63	202.90	185.19	187.77	166.00
Adult Females	34.08	32.55	33.84	25.00	25.92	27.93	31.57	30.80	28.77	33.77	40.20	38.61
Juvenile Males	9.38	13.45	9.87	7.80	10.29	15.57	12.23	13.43	10.73	8.81	6.33	3.03
Juvenile Females	2.00	1.86	2.00	2.03	1.00	0.23	0.00	0.00	0.00	0.00	0.00	0.00
White	112.69	109.07	119.29	115.93	114.33	107.33	120.00	118.83	123.33	113.06	114.80	93.61
Black	110.62	111.10	112.94	105.20	98.50	98.27	98.00	102.67	99.40	98.10	100.77	99.52
Hispanic	15.31	11.24	13.16	15.30	17.25	12.87	13.67	20.70	16.90	14.35	15.90	12.03
Indian	1.38	0.00	0.94	0.13	0.00	0.00	0.10	1.07	1.00	1.00	0.90	0.06
Asian	1.46	2.69	2.48	3.90	2.96	3.80	3.00	2.57	1.77	1.39	1.83	0.48
Other	0.00	0.00	0.16	0.00	0.17	0.00	0.00	0.00	0.00	0.00	0.00	0.00
Work Release	3.69	5.10	7.61	5.80	3.17	4.03	5.27	5.13	1.60	6.65	5.30	3.90
97												
Total	200.00	203.14	205.23	205.10	220.94	238.68	239.30	249.53	261.50	273.90	255.63	241.03
Pretrial	149.23	161.57	154.57	148.03	162.88	179.07	185.53	192.00	196.17	199.13	182.70	171.29
Sentenced	50.77	42.04	50.67	57.07	58.06	59.61	53.77	57.53	65.37	74.77	72.93	69.74
Felony	124.10	118.68	112.63	105.03	119.18	128.61	125.27	124.00	133.93	144.74	140.63	133.77
Misdemeanor	75.90	84.93	92.60	100.07	101.76	110.07	114.03	125.53	127.57	129.16	115.00	107.26
Adult Males	163.06	157.89	161.67	168.43	181.29	203.46	203.13	205.37	213.43	222.97	209.73	195.55
Adult Females	32.94	41.29	36.77	32.07	32.41	29.61	27.53	33.10	36.77	39.55	33.50	36.29
Juvenile Males	3.77	3.64	5.07	3.60	6.59	4.25	5.87	7.57	8.83	10.16	11.17	9.13
Juvenile Females	0.00	0.00	0.77	0.23	0.00	1.21	2.07	2.93	1.53	0.00	0.00	0.00
White	102.77	108.39	108.60	113.93	112.82	119.29	113.70	126.37	132.67	137.94	134.87	126.03
Black	86.35	82.71	84.03	80.23	97.47	102.39	101.00	100.70	102.53	108.48	97.97	99.68
Hispanic	10.58	10.39	10.00	8.90	8.65	15.96	23.60	18.77	21.00	22.84	17.37	13.84
Indian	0.00	0.04	1.00	1.00	1.00	0.04	0.00	0.00	0.00	0.58	1.43	0.35
Asian	0.48	2.43	1.53	1.03	1.53	1.00	1.00	5.17	5.30	4.06	4.00	1.13

**Scott County Community Jail and Alternatives Phase One Study
Appendix E. Monthly Trend in Average Daily Population**

Statistic	Jan	Feb	Mar	Apr	May	Jun	Jul	Aug	Sep	Oct	Nov	Dec
Other	0.00	0.00	0.00	0.00	0.00	0.00	0.00	0.00	0.00	0.00	0.00	0.00
Work Release	3.45	2.61	1.50	1.70	3.00	4.00	1.67	4.33	7.00	4.74	2.57	2.23
Other Location	1.61	2.25	2.87	2.27	1.94	4.54	4.37	3.77	2.13	3.13	2.10	1.35
Annex	59.97	56.93	59.27	61.03	62.41	77.36	78.77	79.63	94.23	93.84	87.67	78.10
98												
Total	246.07	253.36	257.39	255.73	260.71	232.45	247.81	260.79	251.10	236.48	242.48	230.00
Pretrial	178.10	179.14	187.84	185.53	190.61	171.83	184.61	198.55	185.72	177.87	187.00	179.23
Sentenced	67.97	74.21	69.55	70.20	70.10	60.62	63.19	62.24	65.38	58.65	55.48	50.77
Felony	131.97	134.61	149.10	151.60	165.23	152.48	151.74	159.24	153.86	146.65	151.41	138.65
Misdemeanor	114.10	118.75	108.29	104.13	94.84	79.97	96.06	101.55	97.24	87.94	91.07	89.42
Adult Males	199.37	201.93	209.77	206.27	201.81	184.17	203.97	219.17	216.52	201.03	200.34	187.26
Adult Females	40.30	43.50	38.26	41.23	45.77	34.41	33.03	33.59	30.59	26.90	29.10	32.13
Juvenile Males	8.47	6.79	7.35	8.20	11.03	11.28	10.29	7.07	3.90	6.00	10.21	8.48
Juvenile Females	0.00	1.14	2.00	2.00	2.00	2.48	1.48	1.00	1.14	2.58	2.83	2.13
White	118.87	125.18	128.03	126.27	125.58	110.59	122.90	126.72	116.97	111.35	108.28	112.29
Black	110.07	107.93	103.52	101.70	108.90	102.83	108.58	114.86	113.45	104.81	110.69	99.13
Hispanic	17.07	19.93	24.03	25.27	24.87	18.28	16.39	18.17	19.34	19.35	18.86	17.35
Indian	0.00	0.32	1.03	1.20	1.06	0.52	0.00	0.00	0.21	0.00	0.00	0.00
Asian	0.07	0.00	0.77	1.30	0.19	0.24	0.00	0.55	1.10	1.29	1.21	1.52
Other	0.00	0.00	0.00	0.00	0.00	0.00	0.00	0.00	0.00	0.10	0.00	0.00
Work Release	2.23	1.25	1.71	3.23	7.74	7.41	5.90	3.00	2.69	2.63	3.62	1.23
Other Location	1.90	2.54	4.39	3.60	2.26	3.41	1.87	2.93	3.03	3.10	3.72	4.48
Annex	76.47	83.25	85.48	77.63	81.52	72.55	84.23	89.69	89.28	78.42	74.55	69.55
99												
Total	217.57	231.57	223.55	240.30	257.97	256.97	262.13	235.67	211.50	218.61	252.03	229.29
Pretrial	167.73	174.18	162.42	172.97	193.52	193.23	199.83	183.57	157.50	164.87	182.03	157.19
Sentenced	49.83	57.39	61.13	67.33	64.45	63.73	62.30	52.10	54.00	60.19	70.00	72.10
Felony	130.03	141.18	138.23	148.27	154.65	148.40	151.03	151.13	130.80	129.23	133.67	127.74
Misdemeanor	87.53	90.39	85.32	92.03	103.32	108.57	111.10	84.53	80.70	95.84	119.03	101.55
Adult Males	173.17	187.36	182.45	195.43	208.74	205.17	210.20	192.97	175.57	182.97	203.53	187.97
Adult Females	33.57	34.93	35.74	39.10	44.06	47.17	47.03	35.70	29.13	33.58	43.57	34.97
Juvenile Males	9.30	9.25	5.35	5.70	5.16	4.60	4.87	7.00	6.73	7.77	7.47	5.23
Juvenile Females	1.53	0.00	0.00	0.00	0.00	0.00	0.00	0.00	0.00	0.52	1.23	1.00
White	105.97	110.61	111.03	120.93	126.55	130.63	130.90	115.50	96.30	108.81	124.13	114.84
Black	100.07	111.61	100.45	102.27	109.23	111.63	109.53	99.97	95.23	94.97	107.50	98.84
Hispanic	11.03	9.29	10.00	16.87	22.19	14.67	21.60	19.93	19.97	20.90	19.77	15.55
Indian	0.00	0.00	0.06	0.00	0.00	0.00	0.10	0.17	0.00	0.00	0.63	0.03
Asian	0.50	0.07	0.00	0.07	0.00	0.03	0.00	0.10	0.00	0.06	0.03	0.03
Other	0.00	0.00	0.06	0.47	0.00	0.00	0.00	0.00	0.00	0.00	0.00	0.00
Work Release	0.67	5.04	6.65	8.20	6.55	4.97	3.67	1.00	2.60	2.55	3.37	2.48
Other Location	4.83	4.93	3.13	4.93	5.87	5.87	6.73	9.63	15.47	17.71	46.40	27.19
Annex	56.87	62.04	66.39	69.70	83.68	87.67	86.23	73.63	78.87	73.61	73.80	73.90
2000												
Total	239.65	226.28	216.25	217.40	204.42	210.23	221.45	238.90	252.17	219.61	206.03	173.00
Pretrial	167.84	146.28	139.62	150.63	145.71	163.07	176.35	186.45	197.83	168.74	164.30	128.68
Sentenced	72.45	80.10	76.96	62.43	58.71	47.17	45.10	52.42	54.33	50.87	42.10	44.32

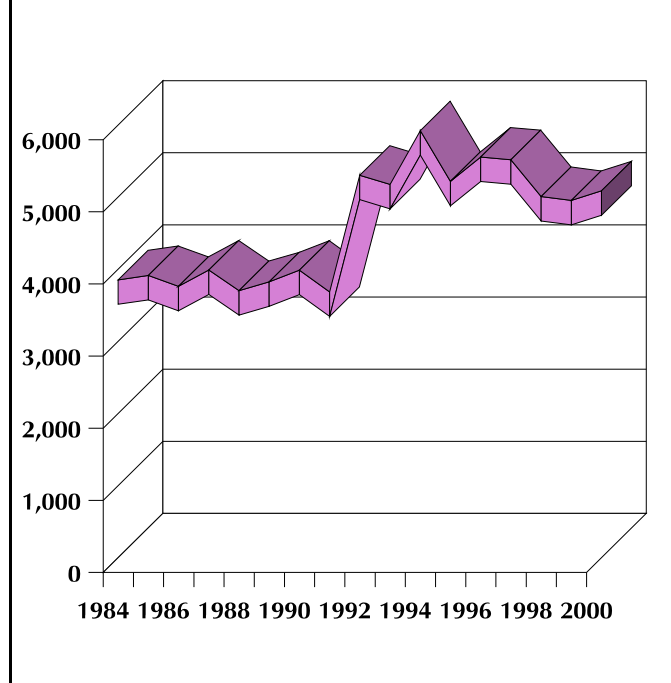
**Scott County Community Jail and Alternatives Phase One Study
Appendix E. Monthly Trend in Average Daily Population**

Statistic	Jan	Feb	Mar	Apr	May	Jun	Jul	Aug	Sep	Oct	Nov	Dec
Felony	128.87	107.76	109.92	121.07	113.19	125.83	130.45	142.10	151.33	134.65	128.07	105.00
Misdemeanor	111.42	118.62	106.67	95.33	91.23	87.43	91.00	96.77	100.83	84.97	77.97	68.00
Adult Males	200.29	192.07	184.29	182.50	177.26	179.57	186.71	201.35	210.37	182.48	170.17	150.52
Adult Females	35.52	30.45	26.92	28.40	22.39	26.60	29.52	30.45	33.43	30.77	29.77	19.06
Juvenile Males	3.81	3.79	5.25	5.50	4.65	4.03	4.61	6.32	8.37	5.55	5.40	3.42
Juvenile Females	0.68	0.00	0.00	0.00	0.00	0.03	0.35	0.10	0.00	0.81	0.73	0.00
White	120.29	108.86	102.62	102.77	95.26	90.33	96.16	98.87	103.40	93.35	87.93	77.94
Black	104.16	103.21	101.04	100.50	94.77	98.03	103.77	113.94	119.83	103.61	98.03	79.71
Hispanic	14.94	13.34	12.79	12.23	12.65	19.57	19.94	18.90	24.47	20.35	17.93	13.90
Indian	0.87	0.03	0.08	0.77	1.10	0.73	0.58	1.16	1.07	0.84	0.67	0.45
Asian	0.03	0.86	0.04	0.03	0.65	1.57	1.00	2.45	3.40	1.45	1.47	1.00
Other	0.00	0.07	0.00	0.07	0.00	0.00	0.00	0.00	0.00	0.00	0.00	0.00
Work Release	1.26	1.00	3.58	4.30	4.32	4.97	4.68	6.68	6.90	4.32	2.30	3.42
Other Location	33.23	24.03	10.83	13.07	2.94	6.80	12.03	28.39	48.87	15.81	6.73	7.55
Annex	73.19	76.03	76.75	70.33	73.13	71.20	73.32	75.97	71.03	72.65	67.60	50.35

Appendix F. Civil Caseload

Total Caseload

Figure F.1 Trend in Civil Caseload (84-2000)



Between 1984 and 2000, the civil caseload has increased 33.5%. Civil caseload has ranged from a low of 3,595 in 1986 to a high of 5,386 in 1996. This impacts the amount of judicial time and resources used in Scott County.

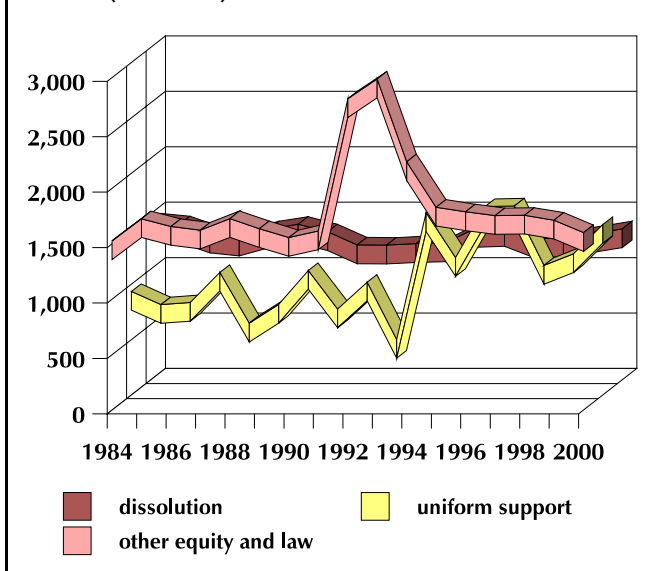
Dissolutions, Uniform Support Actions and Other Equity and Law Matters (84-2000)

The trend in dissolutions has varied from a high of 1,350 in 1984 to a low of 1,131 in 1992. Overall, there is a 5.3% decrease between 1984 and 2000. This trend appears to be relatively flat.

The trend in uniform support cases has been more variable, ranging from a low of 564 in 1988 to a high of 1,632 in 1997. There is an overall increase in uniform support cases of 71.2% during the period between 1984 and 2000. This trend appears to have changed

substantially in 1994-1995.

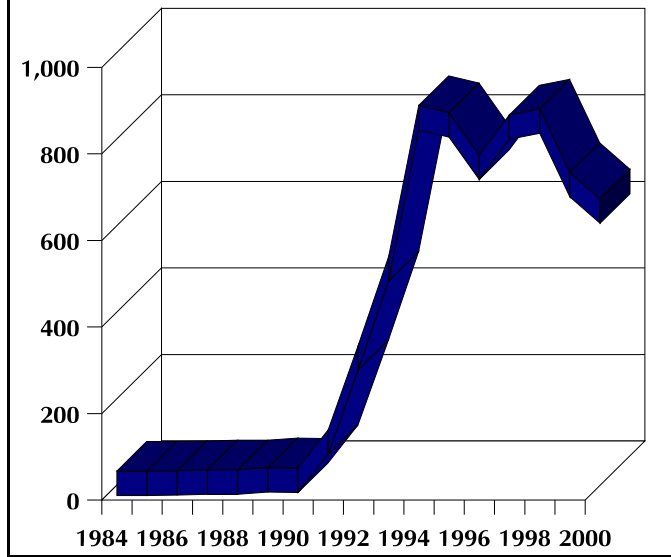
Figure F.2 Trend in Selected Civil Cases (Dissolutions, Uniform Support Actions, and Other Equity and Law Matters (84-2000))



The trend in other equity and law cases has also varied considerably, but the increase which occurred between 1991 and 1994 appears to have been an anomaly. This trend has varied from a low of 1,443 in 1984 to a high of 2,903 in 1993. Overall, there has been a 5% increase during this period.

Domestic Abuse Cases

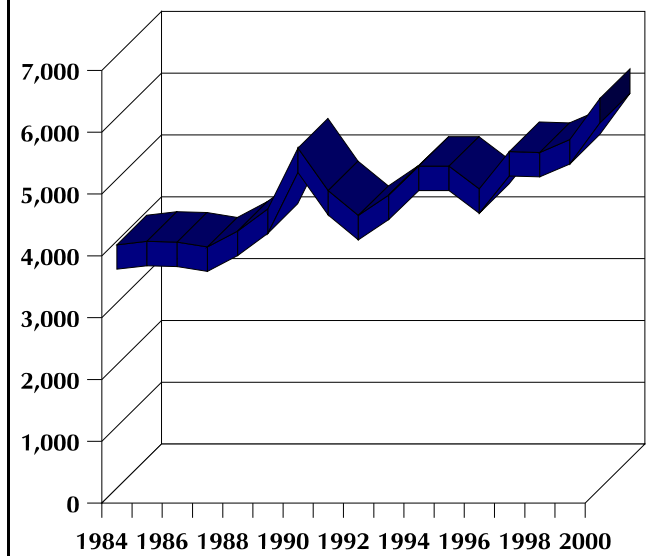
Figure F.3 Trend in Domestic Abuse Cases (84-2000)



There has been a significant change in the filing of domestic abuse cases. In the 1980's, there were less than 15 cases per year. However, beginning in 1991, the number of domestic abuse cases filed increased significantly from 12 in 1990 to 100 in 1991. Since that time this type of case filing has increased to as many as 850 per year. Since 1998, there has been a slight decrease in the number of cases filed. It is important to recognize that domestic abuse statutes and policies have changed significantly in the last twenty years and that cases which are now filed under these statutes may have been prosecuted in other categories at earlier times.

Small Claims

Figure F.4 Trend in Small Claims Cases (84-2000)



Between 1984 and 2000, the number of small claims cases handled by the court has increased 63%. The number of small claims cases has ranged from a low of 3,707 in 1987 to a high of 6,114 in 2000. It is also important to note that the small claim limits increased during this period which influences the number of cases that can be filed in Small Claims court.

**Scott County Community Jail and Alternatives Phase One Study
Appendix F. Civil Caseload**

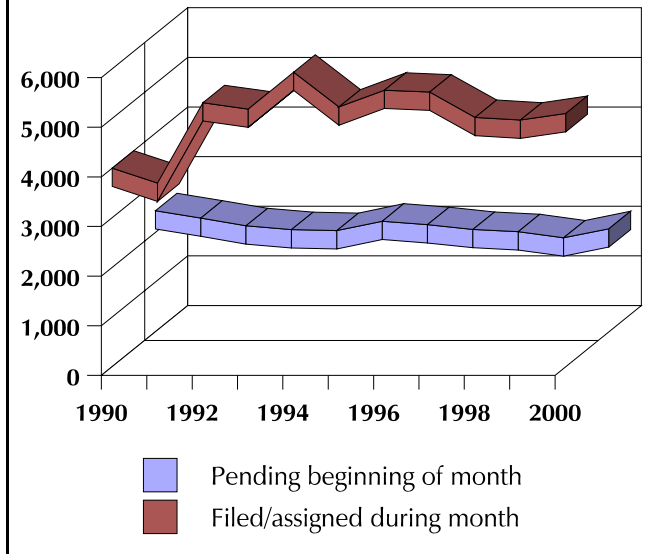
Case Type	84	85	86	87	88	89	90	91	92	93	94	95	96	97	98	99	2000
<i>Civil Cases</i>																	
dissolution	1,350	1,324	1,231	1,203	1,277	1,319	1,251	1,133	1,131	1,144	1,152	1,281	1,289	1,188	1,195	1,235	1,278
uniform support	850	731	750	1,022	564	733	1,039	692	934	417	1,559	1,155	1,616	1,621	1,084	1,190	1,455
domestic abuse	5	5	6	8	8	13	12	100	296	501	850	833	735	828	842	695	634
other equity and law	1,443	1,642	1,572	1,540	1,644	1,552	1,472	1,532	2,725	2,903	2,156	1,746	1,705	1,671	1,674	1,629	1,517
appeals/small claims	36	42	36	46	42	39	43	59	49	43	34	34	41	40	44	36	34
Subtotal Civil	3,684	3,744	3,595	3,819	3,535	3,656	3,817	3,516	5,135	5,008	5,751	5,049	5,386	5,348	4,839	4,785	4,918
Small Claims	3,743	3,800	3,787	3,707	3,967	4,325	5,309	4,620	4,219	4,549	5,014	5,014	4,648	5,252	5,237	5,447	6,114

Civil and Small Claims Dispositions

Year	Civil						Small Claims			
	Pending beginning of month	Filed/assigned during month	Jury trial	Court trial	Guilty Plea/Default	Dismissed/transferred	Pending beginning of month	Filed/assigned during month	Disposed by clerk	Disposed by judicial officer
1990	2,256	3,817	27	256	2,637	1,046	401	5,309	2,074	2,689
1991	2,107	3,516	19	224	2,313	1,116	947	4,620	2,137	2,575
1992	1,951	5,135	26	342	3,456	1,388	855	4,219	1,680	2,720
1993	1,874	5,008	34	804	2,770	1,419	674	4,549	1,352	2,891
1994	1,855	5,751	17	944	3,149	1,452	980	5,014	1,630	3,725
1995	2,044	5,049	23	602	3,031	1,463	639	5,339	1,211	3,738
1996	1,974	5,386	42	597	3,352	1,491	1,029	4,648	1,150	3,338
1997	1,878	5,348	33	570	3,322	1,468	1,189	5,252	1,620	3,510
1998	1,833	4,839	30	735	2,847	1,352	1,311	5,237	1,398	3,685
1999	1,708	4,785	22	820	2,605	1,153	1,465	5,447	1,935	3,746
2000	1,893	4,918	21	1,000	2,600	1,144	1,231	6,114	1,986	4,224
Change	-16.1%	28.8%	-22.2%	290.6%	-1.4%	9.4%	207.0%	15.2%	-4.2%	57.1%

Scott County Community Jail and Alternatives Phase One Study
Appendix F. Civil Caseload

Figure F.5 Trend in Civil Cases Pending and Assigned (90 - 2000)

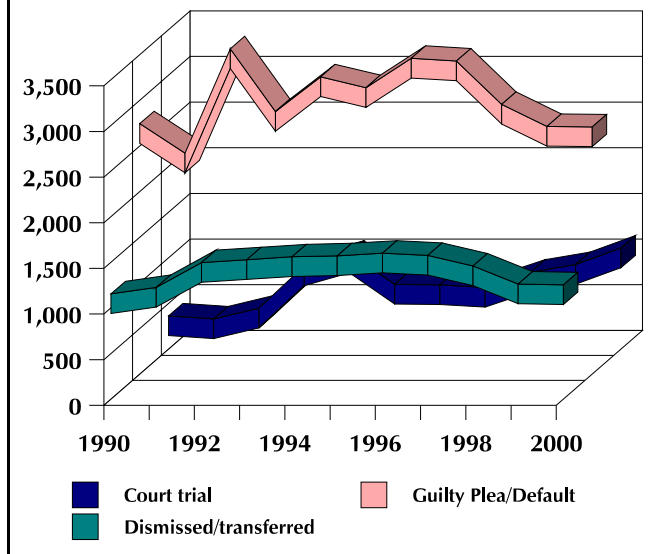


The number of civil cases pending at the beginning of the month has decreased 16% between 1990 and 2000; during the same period the number of cases assigned has increased 29%.

Between 1990 and 2000, the number of civil jury trials decreased 22%, but the number of court trials increased 291% from a low of 256 in 1990 to a high of 1,000 in 2000. The number of cases resolved by pleas or defaults has shown some variability but is now at levels comparable to those seen in 1990.

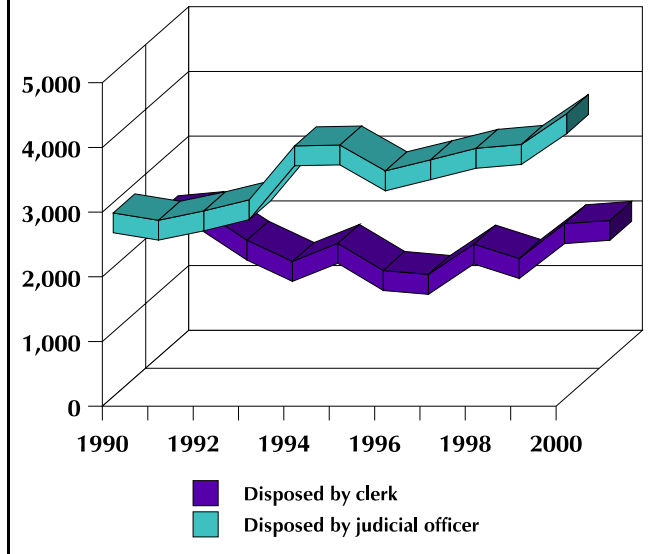
The trend in the number of small claims cases at the beginning of the month has increased 207% since 1990, and the trend seems to be accelerating. During this same period, the cases filed or assigned during the month has increased 15%.

Figure F.6 Trend in Court Trials, Pleas and Defaults, Dismissals and Transfers (90 - 2000)



Scott County Community Jail and Alternatives Phase One Study
Appendix F. Civil Caseload

Figure F.7 Trend in Small Claims Cases Disposed by Clerks and by Judicial Officers (90 - 2000)



Between 1990 and 2000, the number of cases disposed by clerks increased 4% while the number of cases disposed by judicial officers increased 57%.

**Scott County Community Jail and Alternatives Phase One Study
Appendix G. Criminal Case Pendency**

Appendix G. Criminal Case Pendency

Year	Pending end of month	90 days or less	%	3-18 months	%	More than 18 months	%	Out state warrant	%
OWI(1st/2nd)									
1990	602	237	39%	360	60%	1	0%	4	1%
1991	580	380	66%	188	32%	4	1%	8	1%
1992	513	264	51%	224	44%	4	1%	21	4%
1993	379	198	52%	159	42%	0	0%	22	6%
1994	705	174	25%	104	15%	0	0%	427	61%
1995	769	118	15%	179	23%	0	0%	472	61%
1996	822	273	33%	69	8%	0	0%	480	58%
1997	763	362	47%	91	12%	0	0%	310	41%
1998	612	300	49%	76	12%	0	0%	236	39%
1999	681	407	60%	102	15%	0	0%	172	25%
2000	643	389	60%	98	15%	0	0%	156	24%
Change	6.8%	64.1%	53.7%	-72.8%	-74.5%	-100.0%	-100.0%	3800.0%	3551.3%
Other Indictable Misdemeanors									
1990	1,401	689	49%	703	50%	3	0%	6	0%
1991	1,424	935	66%	464	33%	9	1%	16	1%
1992	1,297	561	43%	683	53%	12	1%	41	3%
1993	1,018	369	36%	594	58%	0	0%	55	5%
1994	1,949	661	34%	556	29%	0	0%	732	38%
1995	2,202	753	34%	475	22%	0	0%	974	44%
1996	2,139	833	39%	209	10%	0	0%	1,097	51%
1997	2,398	702	29%	176	7%	0	0%	1,520	63%
1998	2,375	292	12%	73	3%	0	0%	2,010	85%
1999	2,650	1,280	48%	320	12%	0	0%	1,050	40%
2000	2,635	908	34%	227	9%	0	0%	1,500	57%
Change	88.1%	31.8%	-29.9%	-67.7%	-82.8%	-100.0%	-100.0%	24900.0%	13192.2%
OWI (3rd)									
1990	10	7	70%	2	20%	0	0%	1	10%
1991	12	6	50%	4	33%	0	0%	2	17%
1992	9	6	67%	2	22%	0	0%	1	11%
1993	10	8	80%	2	20%	0	0%	0	0%
1994	24	8	33%	5	21%	0	0%	11	46%
1995	58	33	57%	22	38%	0	0%	3	5%
1996	62	41	66%	11	18%	0	0%	10	16%
1997	66	46	70%	12	18%	0	0%	8	12%
1998	110	82	75%	21	19%	0	0%	7	6%
1999	147	109	74%	29	20%	0	0%	9	6%
2000	160	116	72%	29	18%	0	0%	15	9%
Change	1500.0%	1557.1%	3.6%	1350.0%	-9.4%	ERR	ERR	1400.0%	-6.2%

**Scott County Community Jail and Alternatives Phase One Study
Appendix G. Criminal Case Pendency**

Year	Pending end of month	90 days or less	%	3-18 months	%	More than 18 months	%	Out state warrant	%
Other Felonies									
1990	104	52	50%	43	41%	0	0%	9	9%
1991	108	69	64%	32	30%	1	1%	6	6%
1992	155	91	59%	45	29%	3	2%	16	10%
1993	253	146	58%	89	35%	0	0%	18	7%
1994	602	250	42%	83	14%	22	4%	247	41%
1995	308	118	38%	80	26%	0	0%	110	36%
1996	286	148	52%	37	13%	0	0%	101	35%
1997	427	250	59%	63	15%	0	0%	114	27%
1998	221	103	47%	26	12%	0	0%	92	42%
1999	343	217	63%	55	16%	0	0%	71	21%
2000	112	33	29%	9	8%	0	0%	70	62%
Change	7.7%	-36.5%	-41.1%	-79.1%	-80.6%			677.8%	622.2%
Appeals Simple Misdemeanors									
1990	0	0		0		0		0	
1991	0	0		0		0		0	
1992	0	0		0		0		0	
1993	0	0		0		0		0	
1994	0	0		0		0		0	
1995	1	1	100%	0	0%	0	0%	0	0%
1996	0	0		0		0		0	
1997	0	0		0		0		0	
1998	0	0		0		0		0	
1999	0	0		0		0		0	
2000	0	0		0		0		0	
Total Criminal									
1990	2,117	985	47%	1,108	52%	4	0%	20	1%
1991	2,124	1,390	65%	688	32%	14	1%	32	2%
1992	1,974	922	47%	954	48%	19	1%	79	4%
1993	1,660	721	43%	844	51%	0	0%	95	6%
1994	3,280	1,093	33%	748	23%	22	1%	1,417	43%
1995	3,338	1,023	31%	756	23%	0	0%	1,559	47%
1996	3,309	1,295	39%	326	10%	0	0%	1,688	51%
1997	3,654	1,360	37%	342	9%	0	0%	1,952	53%
1998	3,318	777	23%	196	6%	0	0%	2,345	71%
1999	3,821	2,013	53%	506	13%	0	0%	1,302	34%
2000	3,550	1,446	41%	363	10%	0	0%	1,741	49%
Change	67.7%	46.8%	-12.5%	-67.2%	-80.5%	-100.0%	-100.0%	8605.0%	5091.1%

**Scott County Community Jail and Alternatives Phase One Study
Appendix G. Criminal Case Pendency**

Year	Pending end of month	90 days or less	%	3-18 months	%	More than 18 months	%	Out state warrant	%
Total Simple Misdemeanors									
1990	2,582	1,525	59%	918	36%	139	5%	0	0%
1991	2,155	1,385	64%	688	32%	71	3%	0	0%
1992	2,157	1,245	58%	852	39%	60	3%	0	0%
1993	1,395	795	57%	600	43%	0	0%	0	0%
1994	8,214	3,115	38%	3,071	37%	2,028	25%	0	0%
1995	8,913	5,453	61%	1,688	19%	1,772	20%	0	0%
1996	10,566	3,434	33%	4,102	39%	3,030	29%	0	0%
1997	12,539	4,328	35%	5,986	48%	2,225	18%	0	0%
1998	13,435	4,478	33%	6,196	46%	2,761	21%	0	0%
1999	11,845	4,143	35%	5,381	45%	2,321	20%	0	0%
2000	9,664	3,175	33%	2,401	25%	4,088	42%	0	0%
Change	274.3%	108.2%	-44.4%	161.5%	-30.1%	2841.0%	685.8%		
Total Criminal and Simple Misdemeanors									
1990	4,699	2,510	53%	2,026	43%	143	3%	20	0%
1991	4,279	2,775	65%	1,376	32%	85	2%	32	1%
1992	4,131	2,167	52%	1,806	44%	79	2%	79	2%
1993	3,055	1,516	50%	1,444	47%	0	0%	95	3%
1994	11,494	4,208	37%	3,819	33%	2,050	18%	1,417	12%
1995	12,251	6,476	53%	2,444	20%	1,772	14%	1,559	13%
1996	13,875	4,729	34%	4,428	32%	3,030	22%	1,688	12%
1997	16,193	5,688	35%	6,328	39%	2,225	14%	1,952	12%
1998	16,753	5,255	31%	6,392	38%	2,761	16%	2,345	14%
1999	15,666	6,156	39%	5,887	38%	2,321	15%	1,302	8%
2000	13,214	4,621	35%	2,764	21%	4,088	31%	1,741	13%
Change	181.2%	84.1%	-34.5%	36.4%	-51.5%	2758.7%	916.6%	8605.0%	2995.6%

Scott County Community Jail and Alternatives Phase One Study
Appendix H. Specific Offenses in Court Compliance Program

Appendix H. Specific Offenses in Court Compliance Program

Offense	#	%
Accessory	1	0.1%
Accident	1	0.1%
Alcohol to Minor	2	0.2%
Assault on Police Officer	7	0.7%
Assault w/Injury	42	4.3%
Assault	8	0.8%
Assault w/weapon	3	0.3%
Assault w/Intent	4	0.4%
Attempt Burglary	1	0.1%
Bigamy	1	0.1%
Credit Card Fraud	5	0.5%
Carry Weapon	4	0.4%
Child Endangerment	10	1.0%
Criminal Mischief	28	2.9%
Contribute to Delinquency of Minor	1	0.1%
Failure to Control Vehicle	13	1.3%
Domestic Assault w/Injury	15	1.5%
Domestic Assault	16	1.6%
Domestic Assault w/Weapon	1	0.1%
Drive While Barred	109	11.2%
Drive While Revoked	5	0.5%
Drive While Suspended	154	15.8%
Eluding	2	0.2%
No Driver's License	16	1.6%
No Registration	4	0.4%
Failure to Yield	6	0.6%
False Information, statements	3	0.3%
Forgery	3	0.3%
Fraudulent Practice	2	0.2%
Fraudulent Plates	1	0.1%
Gun to Minor	1	0.1%
Harassment	5	0.5%
Identity Theft	2	0.2%
Improper Braking	1	0.1%
Improper Lamps	3	0.3%
Interfering w/Officer	6	0.6%

**Scott County Community Jail and Alternatives Phase One Study
Appendix H. Specific Offenses in Court Compliance Program**

Offense	#	%
Lane Violation	1	0.1%
Leaving Scene of Accident	4	0.4%
Loud Stereo	1	0.1%
Malicious Prosecution	3	0.3%
Muffler violation	1	0.1%
No insurance	59	6.0%
No seat belt	3	0.3%
No tax stamp	1	0.1%
Obstructing	2	0.2%
Operating Motor Vehicle w/o Owner's Consent	8	0.8%
Open Container	4	0.4%
OWI	210	21.5%
Possession Controlled Substance	68	7.0%
Perjury	1	0.1%
Prostitution	8	0.8%
Reckless Driving	4	0.4%
Red Light	4	0.4%
Simple Assault	1	0.1%
Speeding	17	1.7%
Stop sign violation	5	0.5%
Strike a fixture	5	0.5%
Theft	70	7.2%
Tattoo w/o license	1	0.1%
Other traffic	1	0.1%
Truancy	1	0.1%
Underage Tobacco	2	0.2%
Unlawful use of credit card	1	0.1%
Unsafe starting	1	0.1%
PULA	1	0.1%
Other	2	0.2%
Total	976	100.0%

**Scott County Community Jail and Alternatives Phase One Study
Appendix I. Most Serious Charge (Profile of Jail Admissions)**

Appendix I. Most Serious Charge (Profile of Jail Admissions)

Charge	#	%
Abandonment of a person	1	0.02%
Animal Neglect	1	0.02%
Armed with Intent	20	0.34%
Arson 2nd	1	0.02%
Assault on an Officer	24	0.41%
Assault while displaying a weapon	32	0.55%
Assault w/injury	81	1.40%
Assault w/intent	9	0.16%
Assault w/prior felony	2	0.03%
Assault w/serious injury	1	0.02%
Assault w/sexual abuse	5	0.09%
Assault (hate crime)	1	0.02%
Attempt burglary 1	1	0.02%
Attempt burglary 2	11	0.19%
Attempted murder	7	0.12%
AWOL	2	0.03%
Bribery	1	0.02%
Burglary 1	32	0.55%
Burglary 2	35	0.60%
Burglary 3	84	1.45%
Careless driving	1	0.02%
Carry dangerous weapon	9	0.16%
Carry weapon	6	0.10%
Child endangerment	22	0.38%
Child endangerment w/injury	4	0.07%
Child endangerment w/o injury	5	0.09%
Conspiracy to commit felony	4	0.07%
Consume alcohol on highway	3	0.05%
Contempt	85	1.47%
Contributing to the delinquency of a minor	5	0.09%
Criminal damage to property 2	12	0.21%
Criminal mischief 1	1	0.02%
Criminal mischief 2	15	0.26%
Criminal mischief 3	12	0.21%
Criminal mischief 4	22	0.38%
Criminal mischief 5	25	0.43%

**Scott County Community Jail and Alternatives Phase One Study
Appendix I. Most Serious Charge (Profile of Jail Admissions)**

Charge	#	%
Criminal trespass	68	1.17%
Credit card fraud	7	0.12%
Delivery of a controlled substance	81	1.40%
Detainer/hold	456	7.86%
Discharge a weapon	1	0.02%
Disorderly conduct	96	1.66%
Domestic assault w/injury	167	2.88%
Domestic assault 2 - aggravated misdemeanor	16	0.28%
Domestic abuse 3	4	0.07%
Domestic abuse	429	7.40%
Domestic abuse w/weapon	16	0.28%
Domestic abuse w/intent	15	0.26%
Driving while barred	91	1.57%
Driving while revoked	26	0.45%
Drive the wrong way	2	0.03%
Drug offense w/weapon	1	0.02%
Drug stamp violation	1	0.02%
Driving while suspended	101	1.74%
Eluding a police officer	8	0.14%
Enticing a child	1	0.02%
Escape	8	0.14%
Expired meter violation	5	0.09%
Expired registration	2	0.03%
Extortion	2	0.03%
Fail to appear	983	16.95%
Fail to signal	1	0.02%
Falsify game application	1	0.02%
False drivers license or ID	7	0.12%
False reports/statements	2	0.03%
Falsify public documents	1	0.02%
Felon in possession of firearm	9	0.16%
Fire lane violation	1	0.02%
Fireworks	3	0.05%
Forgery	48	0.83%
Fraud - commodities, securities	1	0.02%
Fraud 1	3	0.05%
Fraud 2	7	0.12%
Fraudulent practice	10	0.17%
Fraudulent use of registration	2	0.03%

**Scott County Community Jail and Alternatives Phase One Study
Appendix I. Most Serious Charge (Profile of Jail Admissions)**

Charge	#	%
Gambling	3	0.05%
Habitual offender	2	0.03%
Habitual parking offender	2	0.03%
Harassment	48	0.83%
Harboring a runaway	5	0.09%
Harassment 2	2	0.03%
Harassment 3	1	0.02%
Hearing	29	0.50%
Hit and run	1	0.02%
Host drug gathering	1	0.02%
Impersonating an officer	1	0.02%
Indecent contact w/child	1	0.02%
Indecent exposure	2	0.03%
Interfere w/official acts	43	0.74%
Intoxication	252	4.35%
Involuntary manslaughter	2	0.03%
Kidnaping 1	3	0.05%
Kidnaping 2	1	0.02%
Kidnaping 3	3	0.05%
Lane violation	1	0.02%
Lascivious acts w/a child	5	0.09%
Leaving the scene of an accident	4	0.07%
Loitering	1	0.02%
Malicious prosecution	4	0.07%
Material witness	2	0.03%
Miscellaneous traffic charges	9	0.16%
Motor vehicle theft	1	0.02%
Murder 1	7	0.12%
Murder 2	2	0.03%
No driver's license	27	0.47%
No insurance	6	0.10%
No registration	1	0.02%
Obscene material to a child	1	0.02%
Obstruct emergency vehicle	1	0.02%
Obstruct emergency communication	2	0.03%
Operate a motor vehicle w/o owner's consent	17	0.29%
Open container	8	0.14%
OWI 1	562	9.69%
OWI 2	123	2.12%

**Scott County Community Jail and Alternatives Phase One Study
Appendix I. Most Serious Charge (Profile of Jail Admissions)**

Charge	#	%
OWI 3	72	1.24%
Parking violation	3	0.05%
Parole violation	32	0.55%
Permit unauthorized person to drive/under legal age	12	0.21%
Possession of controlled substance	126	2.17%
Possession of drug paraphernalia	11	0.19%
Possession of prescription drugs	2	0.03%
Possession of stolen property	3	0.05%
Possession of alcohol (underage)	1	0.02%
Possession w/intent (imitation)	2	0.03%
Possession w/intent to deliver	90	1.55%
Presence of alcohol	1	0.02%
Probation violation	94	1.62%
Prohibited acts	2	0.03%
Prostitution	24	0.41%
Public consumption of alcohol	1	0.02%
RCF 72 hour hold	45	0.78%
RCF/Probation violation	5	0.09%
Reckless driving	5	0.09%
Reckless use of fire	3	0.05%
Reconsideration of prison sentence	10	0.17%
Resisting arrest	3	0.05%
Rioting	1	0.02%
Robbery 1	29	0.50%
Robbery 2	18	0.31%
Safekeeping	60	1.03%
Seatbelt violation	1	0.02%
Sexual abuse 2	13	0.22%
Sexual abuse 3	18	0.31%
Simple assault	92	1.59%
Solicitation	2	0.03%
Soliciting w/o a license	2	0.03%
Solicit to commit a felony	1	0.02%
Speeding	3	0.05%
Stalking	7	0.12%
Terrorism	6	0.10%
Terrorism w/intent	6	0.10%
Theft 1	29	0.50%
Theft 2	111	1.91%

**Scott County Community Jail and Alternatives Phase One Study
Appendix I. Most Serious Charge (Profile of Jail Admissions)**

Charge	#	%
Theft 3	73	1.26%
Theft 4	62	1.07%
Theft 5	146	2.52%
Threats	1	0.02%
Traffic device (disregarding)	1	0.02%
Unauthorized possession of weapon	2	0.03%
Unlawful use of license	2	0.03%
Use juvenile to commit a crime	2	0.03%
Video rental property theft	1	0.02%
Violation of domestic/protective order	83	1.43%
Violation of custodial order	1	0.02%
Violation of financial liability	2	0.03%
Voluntary manslaughter	1	0.02%
Willful injury	24	0.41%
Unknown	1	0.02%
Total	5,799	100.00%

**Scott County Community Jail and Alternatives Phase One Study
Appendix J. Most Serious Charge (Profile of Jail Inmates)**

Appendix J. Most Serious Charge (Profile of Jail Inmates)

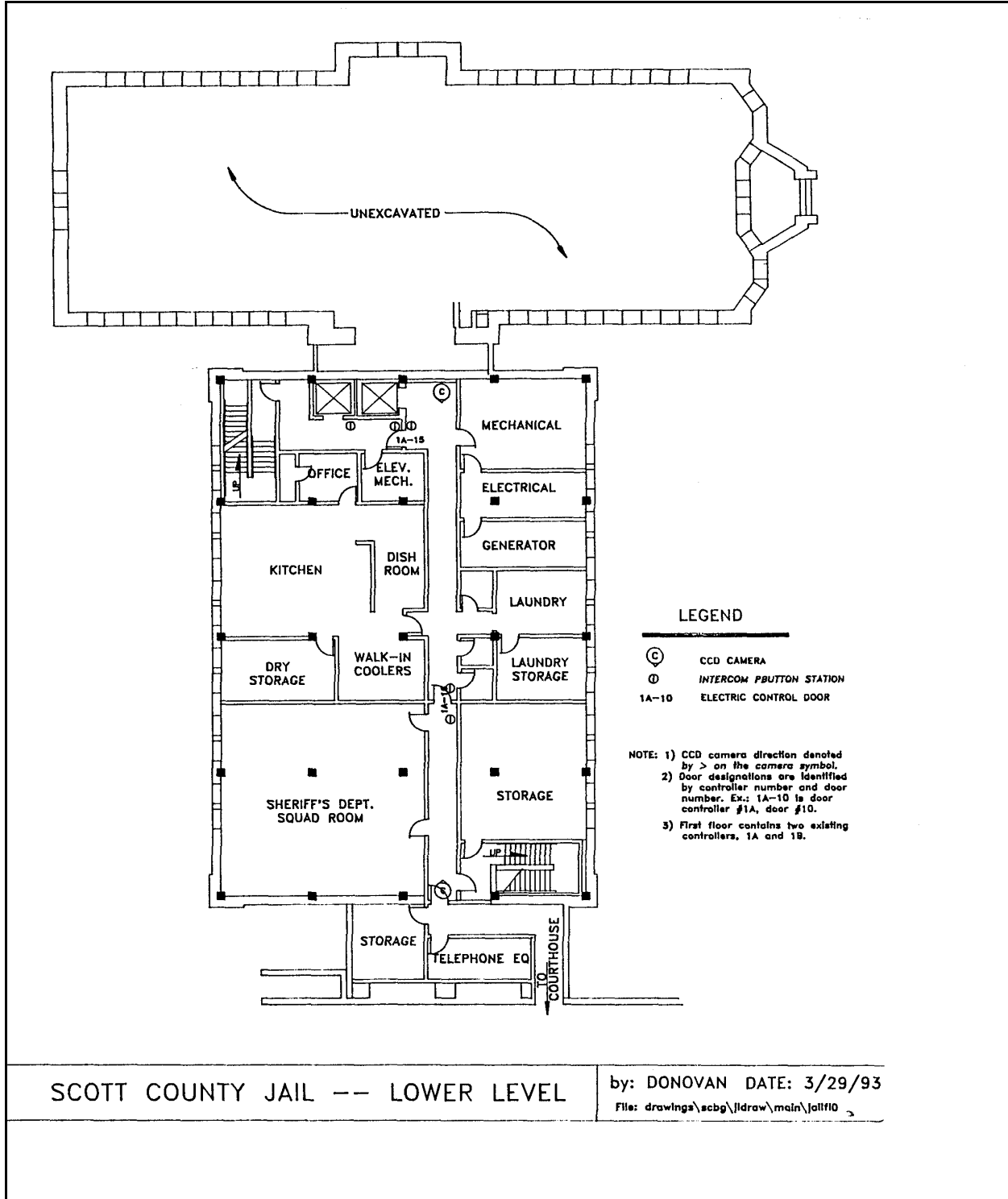
Charge	#	%	Charge	#	%
Armed w/intent	2	0.3%	Interstate/Fugitive	6	1.0%
Arson 1st, 2nd	3	0.5%	Intoxication	1	0.2%
Assault w/injury	3	0.5%	Kidnap 1	3	0.5%
Assault while Display Weapon	10	1.7%	Kidnap 3	2	0.3%
Assault while Committing Felony	1	0.2%	Material Witness	0	0.0%
Assault w/intent	1	0.2%	Murder 1	9	1.5%
Attempted murder	10	1.7%	Nothing listed	2	0.3%
Burglary 1	7	1.2%	Operating Motor Vehicle w/o Owners Consent	1	0.2%
Burglary 2	7	1.2%	OWI 1	8	1.3%
Burglary 3	33	5.5%	OWI 2	8	1.3%
Child Endangerment w/injury	2	0.3%	OWI 3 or more	8	1.3%
Contempt	9	1.5%	Parole Violation	1	0.2%
Conspiracy to Commit a felony	1	0.2%	Possession of Controlled Substance	9	1.5%
Criminal Mischief 2	2	0.3%	Possession w/Intent to Deliver	20	3.3%
Criminal Mischief 4	4	0.7%	Probation Violation	10	1.7%
Criminal Mischief 5	1	0.2%	Prohibition Acts	1	0.2%
Criminal Trespass	2	0.3%	Prostitution	4	0.7%
Credit Card Fraud	2	0.3%	Robbery 1	36	6.0%
Delivery Controlled Substance	34	5.7%	Robbery 2	17	2.8%
Detainer/County	2	0.3%	Safekeeping	1	0.2%
Detainer/Marshal	6	1.0%	Sex Abuse 2	15	2.5%
Domestic Assault w/injury	12	2.0%	Sex Abuse 3	8	1.3%
Domestic 2nd/Aggravated Misdemeanor	4	0.7%	Simple Assault	3	0.5%
Domestic 3rd	3	0.5%	Stalking	1	0.2%
Domestic Abuse	7	1.2%	Terrorism	2	0.3%
Domestic w/intent	1	0.2%	Terrorism w/intent	3	0.5%
Drive while Barred	11	1.8%	Theft 1	11	1.8%
Drive under Suspension	10	1.7%	Theft 2	26	4.3%
Eluding	1	0.2%	Theft 3	8	1.3%
Felon in Possession of Firearm	1	0.2%	Theft 4	4	0.7%
Forgery	20	3.3%	Theft 5	3	0.5%
Fraud 2nd	2	0.3%	Unlawful use of license	1	0.2%
FTA	98	16.4%	US Marshal Prisoner	11	1.8%
Hold - WRC	2	0.3%	Violation Sex Offender Registry	1	0.2%
Hold - DOC	2	0.3%	Violation Domestic Order	7	1.2%

Scott County Community Jail and Alternatives Phase One Study
Appendix J. Most Serious Charge (Profile of Jail Inmates)

Charge	#	%	Charge	#	%
Homicide by Vehicle	3	0.5%	Violation Domestic/Protective Order	5	0.8%
Detainer INS	12	2.0%	Willful Injury	10	1.7%
Indecent Contact w/Child	2	0.3%	Total	599	100.0%

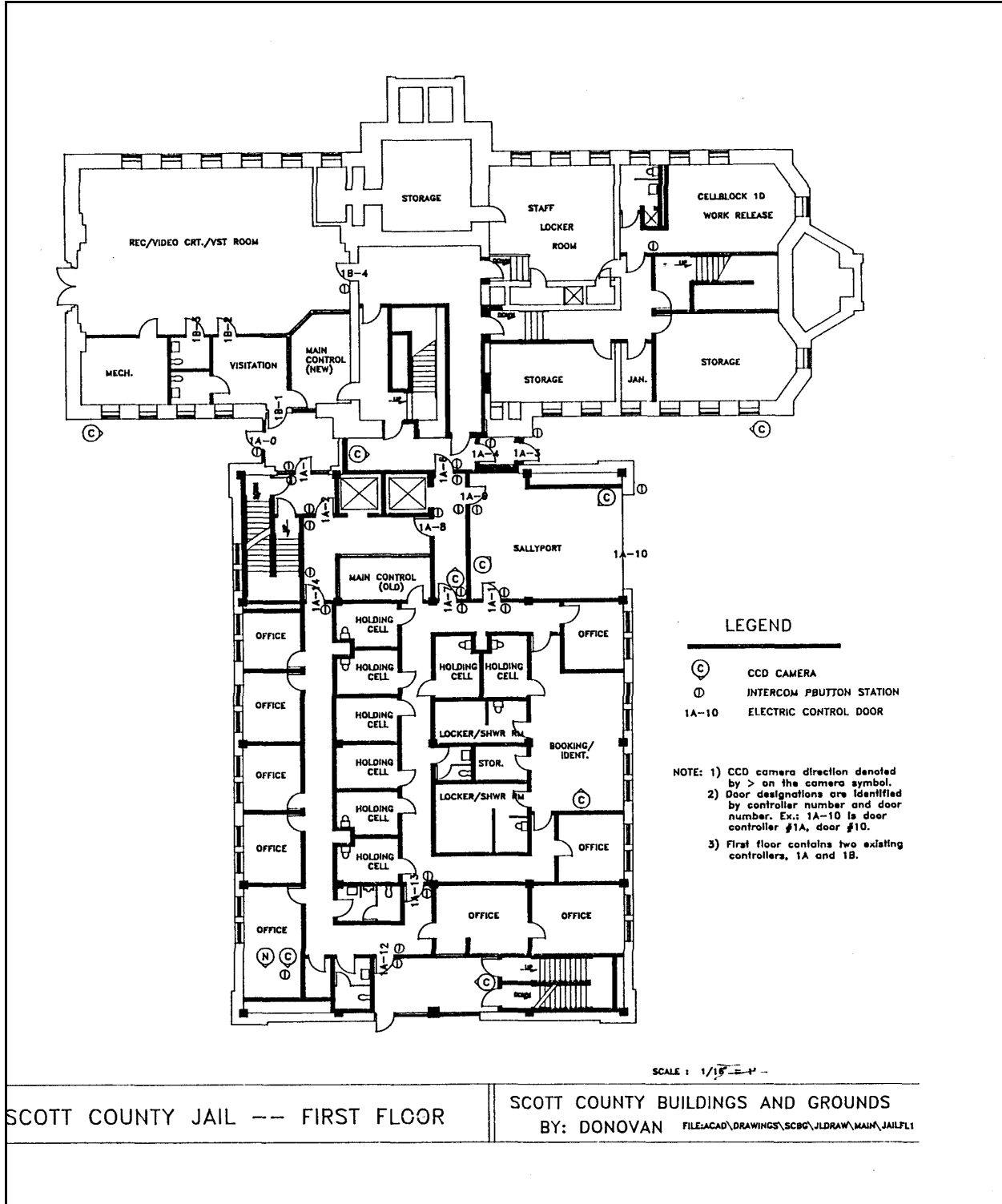
Appendix K. Main Jail Floor Plans

Lower Level



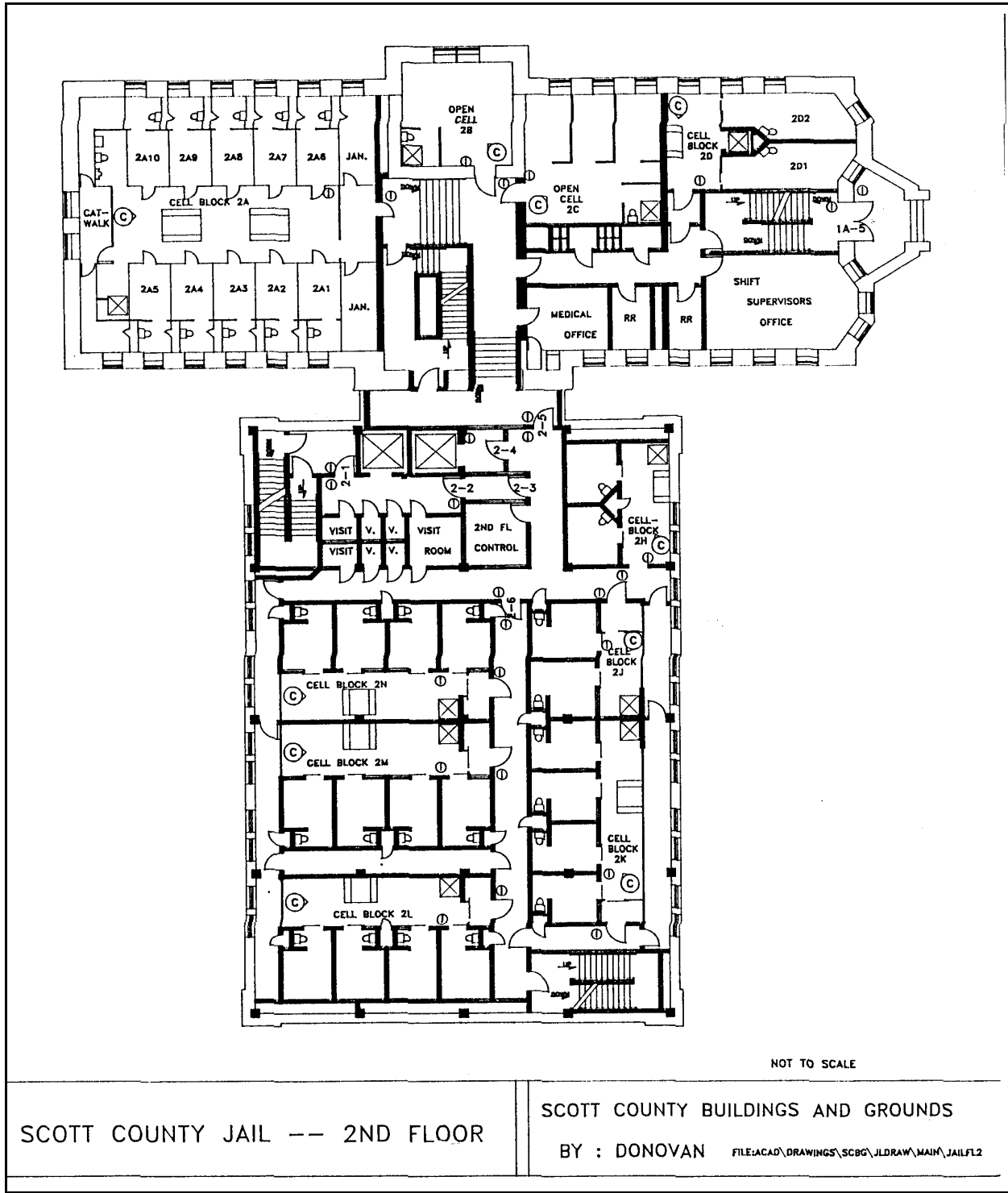
Scott County Community Jail and Alternatives Phase One Study
 Appendix K. Main Jail Floor Plans

First Floor



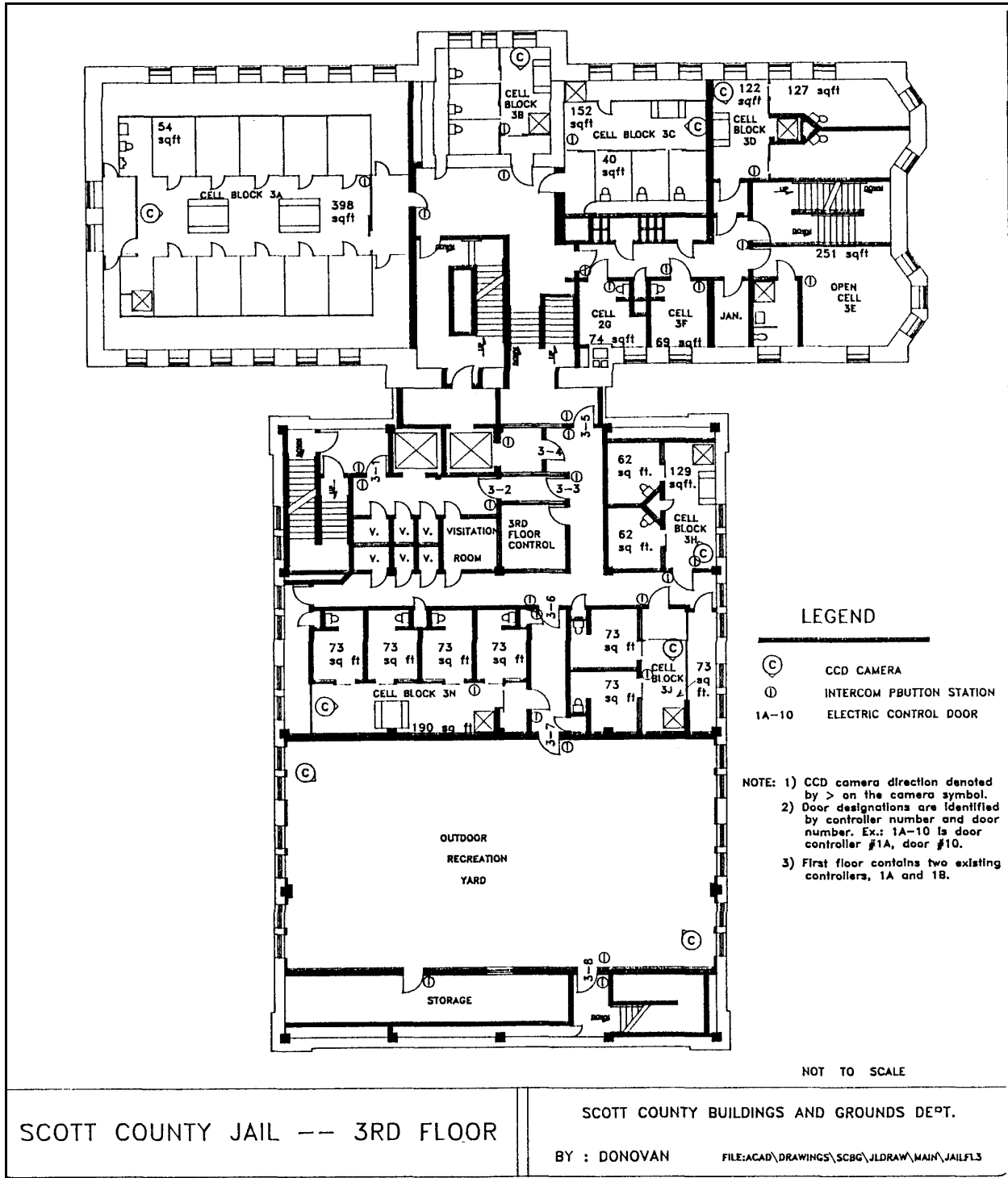
Scott County Community Jail and Alternatives Phase One Study
 Appendix K. Main Jail Floor Plans

Second Floor



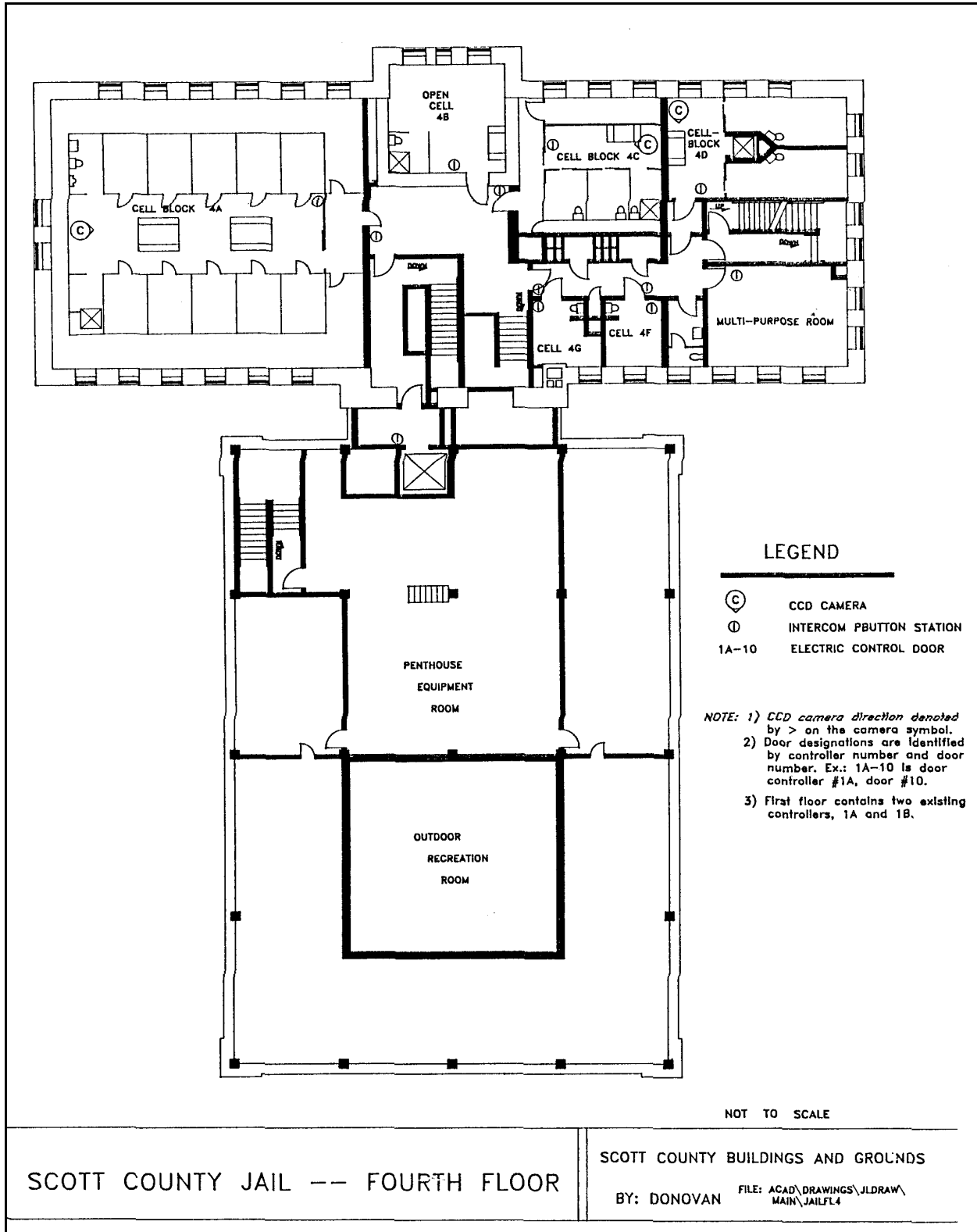
Scott County Community Jail and Alternatives Phase One Study
 Appendix K. Main Jail Floor Plans

Third Floor



Scott County Community Jail and Alternatives Phase One Study
 Appendix K. Main Jail Floor Plans

Fourth Floor



Appendix L. Annex Floor Plan

