

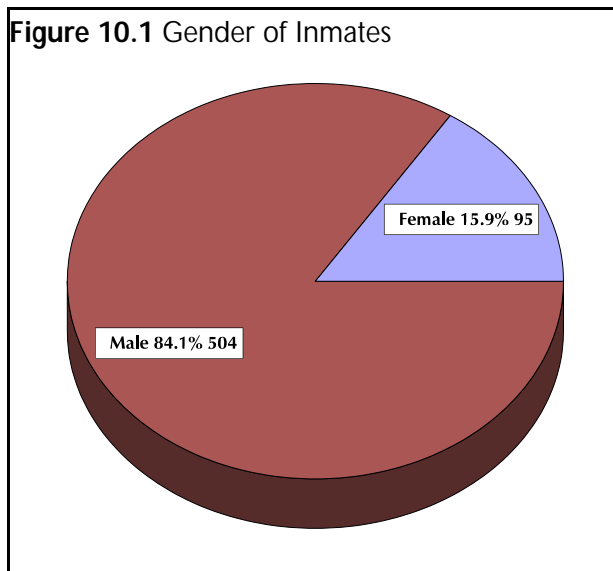
Section 10. Profile of Jail Inmates

This section of the report examines inmates who stay in custody on a long-term basis (more than 30 days). The consultant created a random sample of these inmates by automating one Jail Tracking Log per quarter for 1998 through 2001. These logs were provided by the Case Expediter and have the advantage of showing the multiple cases in which inmates are involved. It is this population that uses much of the available jail space; they would also be the target population of jail-based alternatives and programs.

Demographics

Gender

Figure 10.1 Gender of Inmates

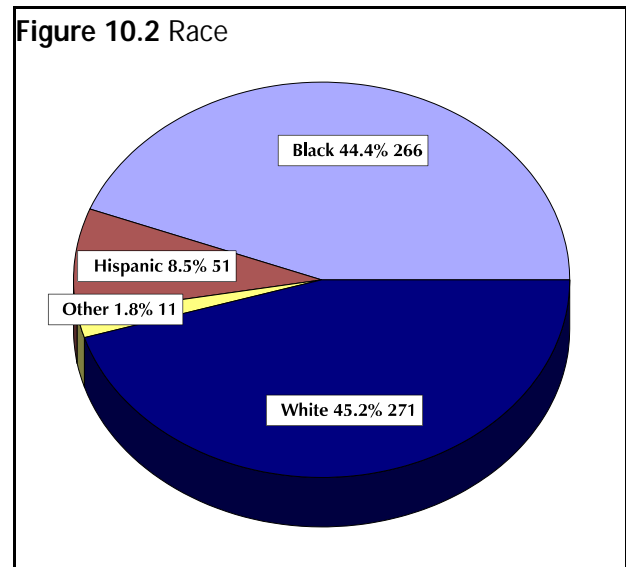


Just as in the profile of bookings, about 45% of inmates are white and about 45% are black.

About 15% of inmates held more than 30 days are female. Although this is slightly less than the percentage of bookings who were female (19% of bookings), it is not significantly different.

Race

Figure 10.2 Race



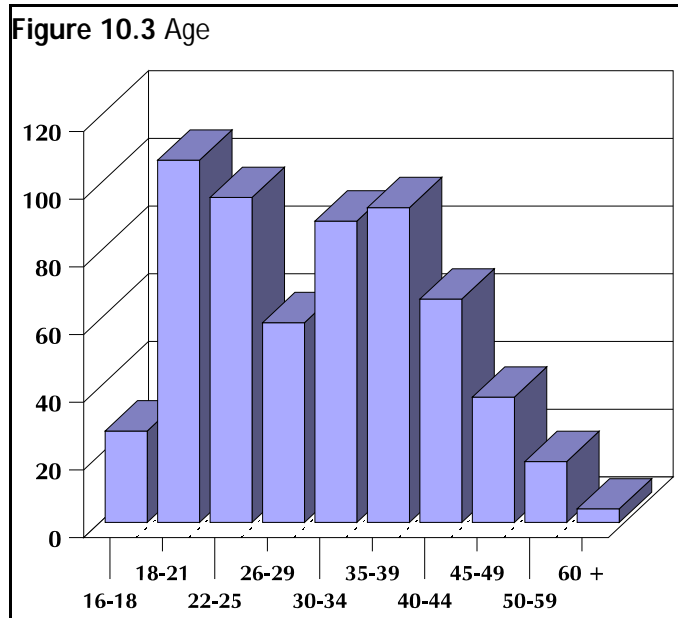
**Scott County Community Jail and Alternatives Phase One Study
Section 10. Profile of Jail Inmates**

Age

Table 10.1 Age

Age Group	#	%
16-18	27	4.5%
18-21	107	17.9%
22-25	96	16.0%
26-29	59	9.8%
30-34	89	14.9%
35-39	93	15.5%
40-44	66	11.0%
45-49	37	6.2%
50-59	18	3.0%
60 +	4	0.7%
Unknown	3	0.5%
Total	599	100.0%
Average		31.16
Median		30.38
Minimum		16.06
Maximum		70.28

Figure 10.3 Age



The average age of long term inmates is 31.16 years, with a median age of 30.38 years. There are no significant differences in these inmates in terms of age.

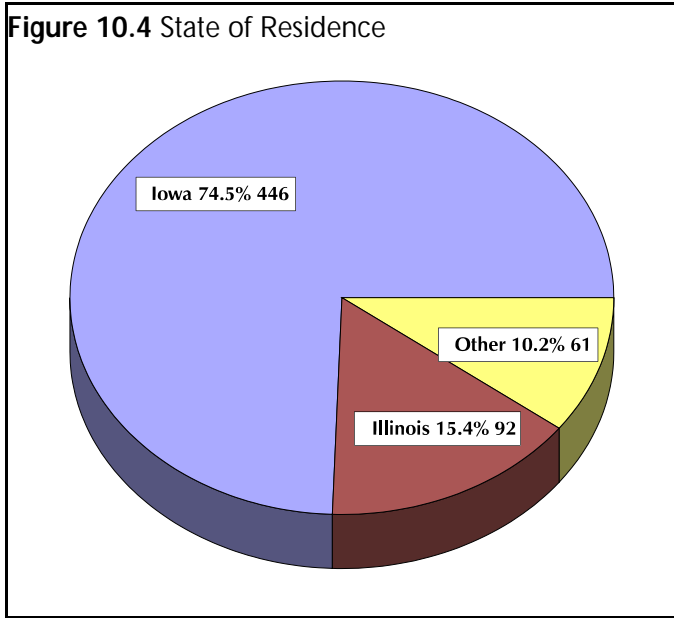
Scott County Community Jail and Alternatives Phase One Study
Section 10. Profile of Jail Inmates

Residence

Table 10.2 State of Residence

State	#	%
Arkansas	4	0.7%
Arizona	1	0.2%
California	6	1.0%
Connecticut	1	0.2%
Colorado	3	0.5%
Florida	5	0.8%
Iowa	446	74.5%
Illinois	92	15.4%
Indiana	4	0.7%
Kansas	2	0.3%
Maryland	1	0.2%
Mexico	3	0.5%
Michigan	7	1.2%
Missouri	7	1.2%
Mississippi	6	1.0%
North Dakota	1	0.2%
Ohio	1	0.2%
Tennessee	1	0.2%
Texas	4	0.7%
Wisconsin	2	0.3%
Unknown	2	0.3%
Total	599	100.0%

Figure 10.4 State of Residence

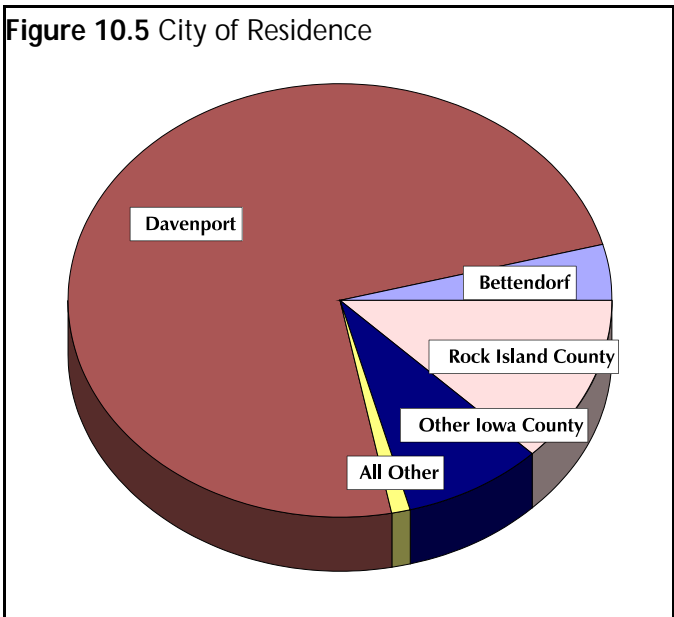


About 75% of long-term inmates lived in the State of Iowa and 15% lived in Illinois. This population was somewhat more likely to be from out of state than the entire population booked (84% of persons booked in 2000 lived in Iowa).

Table 10.3 City of Residence (Scott County only)

City	#	%
Bettendorf	22	4.4%
Davenport	375	73.8%
Eldridge	2	0.4%
LeClaire	2	0.4%
Long Grove	1	0.2%
Park View	1	0.2%
Other Iowa County	42	8.3%
Rock Island County	63	12.4%
	508	100.0%

Figure 10.5 City of Residence

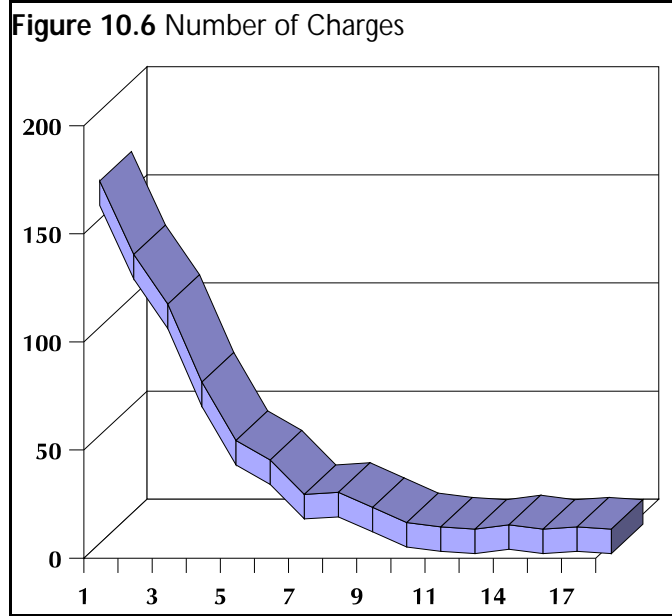


**Scott County Community Jail and Alternatives Phase One Study
Section 10. Profile of Jail Inmates**

About 75% of inmates lived in the City of Davenport. This is about 10% higher than that seen in the previous profile. About 82% of long-term inmates lived in either Scott or Rock Island Counties.

Charge Information

Number of Charges



The average number of charges for which each of the long-term inmates had been jailed was 3.29 charges, with a range from 1 to 27. The median number of charges was three. This is an area in which the long-term inmates are significantly different from the previous profile of all inmates booked (1.6).

Table 10.4 Number of Charges

Number of Charges	#	%	Cum %
1	162	27.0%	27.0%
2	128	21.4%	48.4%
3	105	17.5%	65.9%
4	69	11.5%	77.5%
5	42	7.0%	84.5%
6	33	5.5%	90.0%
7	17	2.8%	92.8%
8	18	3.0%	95.8%
9	11	1.8%	97.7%
10	4	0.7%	98.3%
11	2	0.3%	98.7%
12	1	0.2%	98.8%
13	1	0.2%	99.3%
14	3	0.5%	99.5%
15	1	0.2%	99.8%
16	1	0.2%	99.8%
17	2	0.3%	99.8%
18	1	0.2%	99.8%
19	1	0.2%	99.8%
20	1	0.2%	99.8%
21	1	0.2%	99.8%
22	1	0.2%	99.8%
23	1	0.2%	99.8%
24	1	0.2%	99.8%
25	1	0.2%	99.8%
26	1	0.2%	99.8%
27	1	0.2%	100.0%
Total	599	100.0%	
Average			3.29
Median			3
Minimum			1
Maximum			27

**Scott County Community Jail and Alternatives Phase One Study
Section 10. Profile of Jail Inmates**

Number of Cases

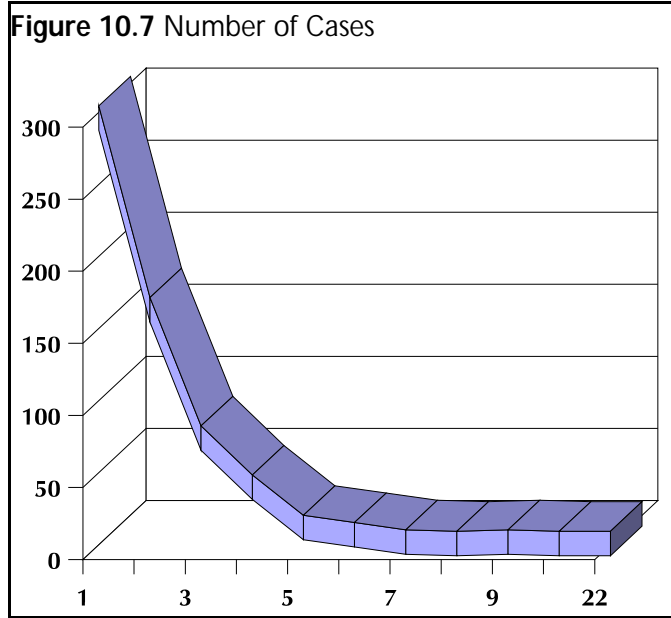


Table 10.5 Number of Cases

Number of Cases	#	%	Cum %
1	296	49.4%	49.4%
2	163	27.2%	76.6%
3	74	12.4%	89.0%
4	40	6.7%	95.7%
5	12	2.0%	97.7%
6	7	1.2%	98.8%
7	2	0.3%	99.2%
8	1	0.2%	99.3%
9	2	0.3%	99.7%
10	1	0.2%	99.8%
22	1	0.2%	100.0%
Total	599	100.0%	
Average			1.97
Median			2
Minimum			1
Maximum			22

Unlike the previous group of inmates who were booked at the facility in 2000, this group of inmates were more likely to have multiple cases pending at the same time. On average, this group of inmates had 1.97 cases with a range from 1 to 22 separate cases. The median number of cases was 2.

Primary Charge

The most common reason for detention within this group of long-term inmates was for failure to appear. Robbery 1st, Burglary 3rd, and Delivery of a Controlled Substance were the most common new charges. Appendix J provides a list of the primary charge on which all long-term inmates were arrested.

Scott County Community Jail and Alternatives Phase One Study
Section 10. Profile of Jail Inmates

Charge Category

Figure 10.8 Type of Charge

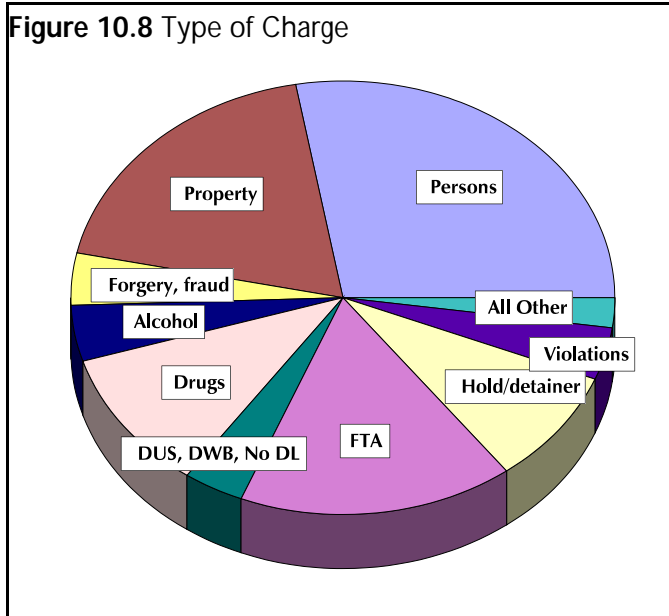


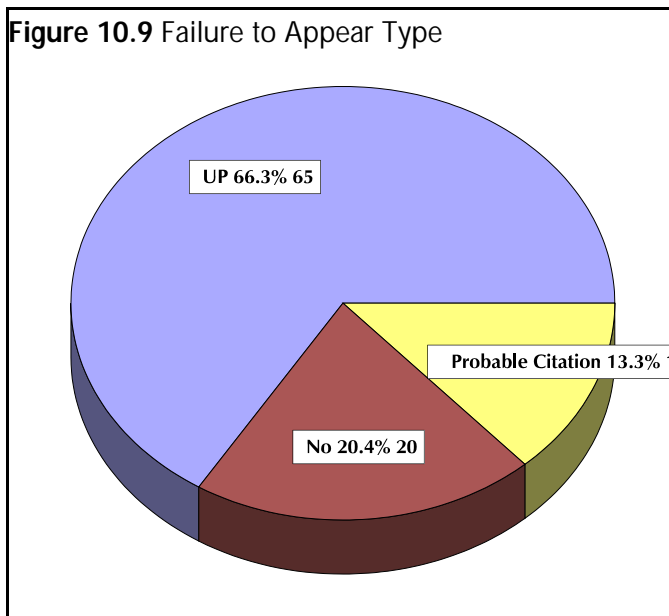
Table 10.6 Type of Charge

Charge Category	#	%
Persons	168	28.0%
Property	112	18.7%
Forgery, fraud	24	4.0%
Alcohol	25	4.2%
Drugs	63	10.5%
DUS, DWB, No DL	21	3.5%
FTA	98	16.4%
Hold/detainer	52	8.7%
Violation of court order, contempt, probation, etc	24	4.0%
Sex Offense (Prostitution)	5	0.8%
All Other	7	1.2%
Total	599	100.0%

28% of the individuals who were held more than 30 days were charged with a crime against a person. This is somewhat higher than the proportion of persons booked who are charged with a person offense (20%). The proportion of individuals held for property offenses is also higher in this group (19% versus 13%). The proportion of individuals held for drug offenses is higher (10% versus 5%), while the proportion of individuals held for alcohol offenses is lower (4% versus 18%). The proportion of individuals held for failure to appear is largest in both - and is at about the same level in both groups.

Failure to Appear

Figure 10.9 Failure to Appear Type



About two-thirds of the long-term inmates who failed to appear were on unsupervised probation. About 13% appear to have been issued a citation. The probability of citation was established by evaluation of charges which are most commonly cited. Typical examples are theft 5th and criminal mischief 5th.

Scott County Community Jail and Alternatives Phase One Study
Section 10. Profile of Jail Inmates

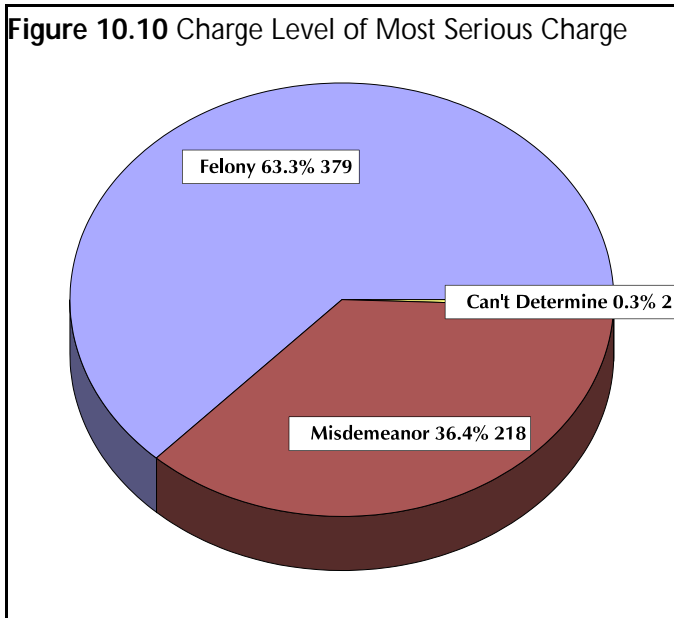
Table 10.7 Charge for which FTA Occurred

Charge Category	#	%
Persons	20	20.0%
Property	16	16.0%
Alcohol	19	19.0%
Drugs	10	10.0%
DUS, DWB, No DL	26	26.0%
FTA	0	0.0%
Violation of court order, contempt, probation, etc	2	2.0%
Sex Offense (Prostitution)	5	5.0%
All Other	2	2.0%
Total	100	100.0%

More than 25% of these FTA's were for driving while suspended, barred, or otherwise without a license. About 20% were for person offenses. 19% were for alcohol offenses (primarily OWI), and 10% were for drug offenses.

Charge Level (Most Serious Offense)

Figure 10.10 Charge Level of Most Serious Charge



Inmates who stay in the facility on a long term basis are much more likely to be charged with felonies (63% versus 27%).

Assessment of Specific Type Offenses

Table 10.8 Presence of Specific Offenses

Person Offense		
Yes	230	38.4%
No	369	61.6%
	599	100.0%
Drug or Alcohol Offense		
Yes	169	28.2%
No	430	71.8%
	599	100.0%
Warrant or Detainer		
Yes	244	40.7%
No	355	59.3%
	599	100.0%

Nearly 40% of long-term inmates have at least one person offense during this booking; they are more likely than the entire population to have person offenses. About 30% had at least one drug or alcohol offense during this booking; they are more likely than the population as a whole to have drug and alcohol charges. About 40% had at least one warrant or detainer during this booking. They are more likely to have warrants and detainers.

Scott County Community Jail and Alternatives Phase One Study
Section 10. Profile of Jail Inmates

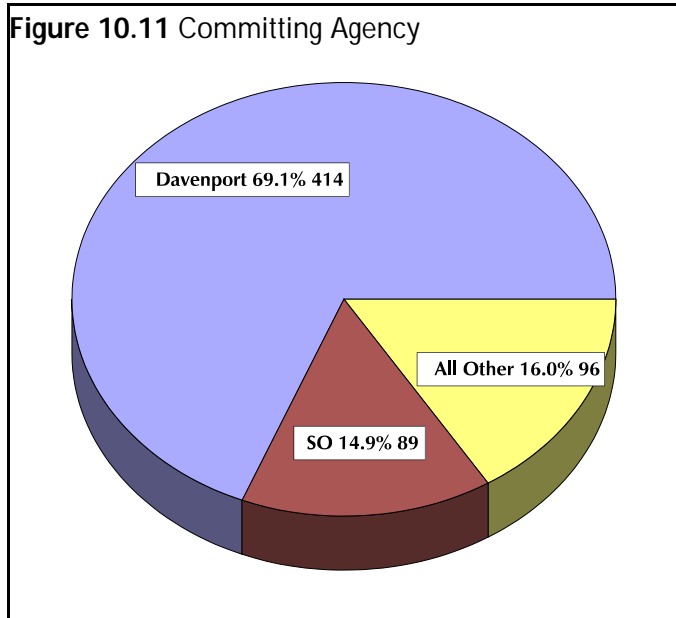
Committing Agency

Table 10.9 Committing Agency

Committing Agency	#	%
Bettendorf	17	2.8%
Buffalo PD	4	0.7%
CSD Warrant	2	0.3%
DCI	2	0.3%
DOC	1	0.2%
Davenport	414	69.1%
Eldridge	2	0.3%
INS	12	2.0%
ISP	6	1.0%
JDC	1	0.2%
LeClaire	4	0.7%
MEG	8	1.3%
RCF	3	0.5%
Rock Island County	2	0.3%
Sheriff's Dept	89	14.9%
Transcor	9	1.5%
US Marshal	16	2.7%
Walcott	3	0.5%
Warrant (other)	1	0.2%
WRC	3	0.5%
Total	599	100.0%

The legal status of these inmates is more complex than that seen in the other sample because of their multiple cases. "Holds" are those inmates who are in custody **only** on a warrant or detainer, i.e., a DOC inmate who has been returned for a legal matter. "Predispositional" inmates are those who have either pled or been found guilty, but have not yet been sentenced. "Pretrial" inmates are those who have not yet gone to trial. Given multiple cases, many combinations are possible. Inmates who are only pretrial account for just under 30% of long-term inmates; in combination with inmates who have other charges for which they are sentenced as well as holds, this population accounts for about half of long-term inmates.

Figure 10.11 Committing Agency



More than half of the long-term inmates were committed by the Davenport Police Department. About 15% each were committed by the Sheriff's Department.

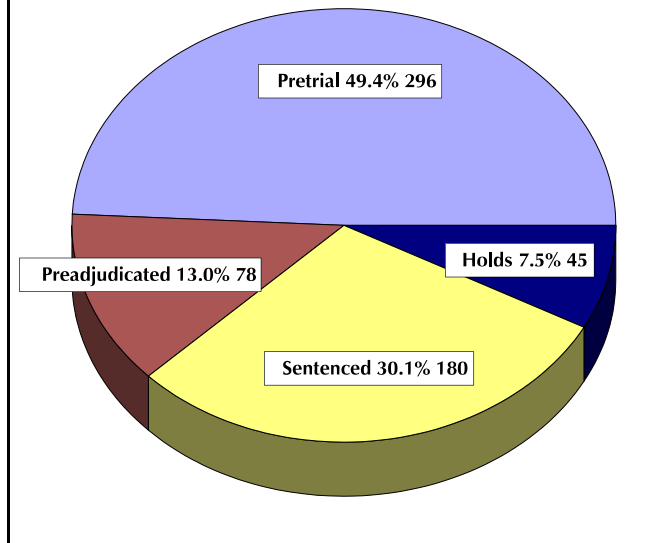
Legal Status

Table 10.10 Legal Status

Legal Status	#	%
Hold	45	7.5%
Predispositional	51	8.5%
Predispositional and Hold	8	1.3%
Predispositional and Sentenced	14	2.3%
Predispositional, Sentenced & Hold	5	0.8%
Pretrial	173	28.9%
Pretrial & hold	37	6.2%
Pretrial & sentenced	80	13.4%
Pretrial, sentenced and hold	6	1.0%
Sentenced	166	27.7%
Sentenced & hold	14	2.3%
Total	599	100.0%

Scott County Community Jail and Alternatives Phase One Study
Section 10. Profile of Jail Inmates

Figure 10.12 Legal Status



When considered with those who are pre-dispositional, this group of inmates accounts for just under two-thirds of all long-term inmates. Sentenced inmates account for about 30% of long-term inmates.

Table 10.12 shows the relationships among legal status and charge level. Nearly all holds are felons; very few felons are sentenced (about 5%). Most misdemeanants are sentenced - although about 5% of the long-term inmates were pre-trial misdemeanants. Most pretrial and pre-adjudicated inmates were felons.

Table 10.11 Legal Status by Charge Level

Legal Status	Felony	%	Misdemeanor	%
Hold	44	7.3%	1	0.2%
Predispositional	45	7.5%	6	1.0%
Predispositional and Hold	8	1.3%	0	0.0%
Predispositional and Sentenced	11	1.8%	3	0.5%
Predispositional, Sentenced & Hold	3	0.5%	2	0.3%
Pretrial	138	23.0%	35	5.8%
Pretrial & hold	29	4.8%	8	1.3%
Pretrial & sentenced	51	8.5%	29	4.8%
Pretrial, sentenced & hold	5	0.8%	1	0.2%
Sentenced	34	5.7%	132	22.0%
Sentenced & hold	11	1.8%	3	0.5%
Total	379	63.3%	220	36.7%

Scott County Community Jail and Alternatives Phase One Study
Section 10. Profile of Jail Inmates

Bond

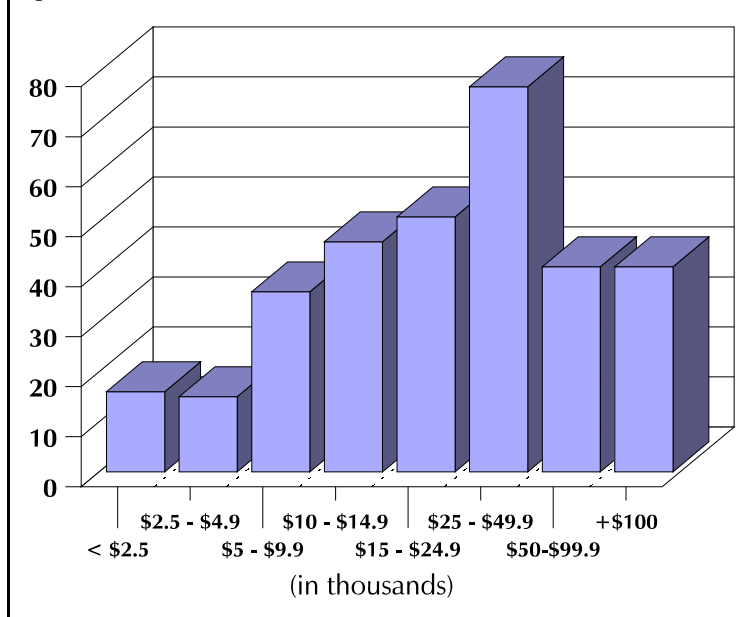
Table 10.12 Bond

Bond	#	%	Adj %
No bond	65	10.9%	
Legal status precludes bond	211	35.2%	
Less than \$2,500	16	2.7%	5.0%
\$2,500 - \$4,999	15	2.5%	4.6%
\$5,000 - \$9,999	36	6.0%	11.1%
\$10,000 - \$14,999	46	7.7%	14.2%
\$15,000 - \$24,999	51	8.5%	15.8%
\$25,000 - \$49,999	77	12.9%	23.8%
\$50,000-\$99,999	41	6.8%	12.7%
Over \$100,000	41	6.8%	12.7%
	599	100.0%	
Average			\$58,911.39
Median			\$23,650.00
Minimum			\$130.00
Maximum			\$1,005,000.00

Table 10.13 shows bond on **all** charges. For about 35% of long-term inmates, bond is not an option - either because they are sentenced or because of a detainer. About 10% of the long-term inmates were not permitted bond, based on the type of charge. For the remaining 55% of long-term inmates, the average bond was \$58,911.39; the median bond was \$23,650. Bond ranged from a low of \$130 to a high of over a million dollars. About 25% of these inmates had bond that was set between \$25,000 and \$49,999. Bond level, by itself, can be deceiving. For example, many of the lower bond levels might relate to one charge, while the inmate is sentenced or on a hold/ detainer for another.

Based on law and practice in Iowa, 10% bond must be approved by the Court. As a result, individuals who are going to be released on bond must either come up with surety or cash, if they are not going to be released on pre-trial release.

Figure 10.13 Amount of All Bond



Next Event

“Next event” is the next thing that is scheduled to occur. It identifies where in the process an individual inmate is.

Scott County Community Jail and Alternatives Phase One Study
Section 10. Profile of Jail Inmates

Table 10.13 Next Event

Next Scheduled Event	#	%
Arraignment	34	5.7%
Court on other case	41	6.8%
Good time revoked	66	11.0%
Hearing	6	1.0%
Jury trial	61	10.2%
Motion Hearing	9	1.5%
No court attorney	5	0.8%
No court unless called	2	0.3%
None listed	34	5.7%
Other	20	3.3%
PB Revocation Hearing	3	0.5%
Plea	12	2.0%
Pretrial conference	81	13.5%
Ready for transport	17	2.8%
Sentencing	79	13.2%
Time up/verify	10	1.7%
Trial	13	2.2%
Unsupervised Probation	5	0.8%
US Marshall - rev case	19	3.2%
Video court	1	0.2%
Worker review date	81	13.5%
Total	599	100.0%

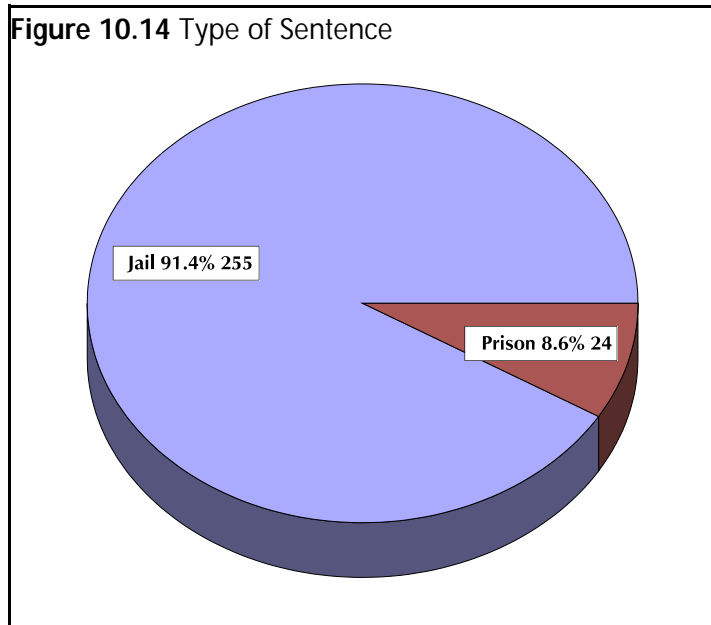
Inmates who were waiting for one of the following events each accounted for 13% of long-term population:

- Pretrial conference,
- Sentencing,
- Worker review date.

About 10% were held because of a good time revocation and about 10% were waiting for a jury trial.

Sentence Information

Figure 10.14 Type of Sentence



More than 90% of the inmates who were sentenced were sentenced to serve jail time. The 10% who were sentenced to prison time were pending transfer on that charge or waiting for resolution of another matter. It is important to note that the numbers about length of sentence that are provided in Table 10.15 show the entire sentence, **including time which was suspended**; it does not reflect the 20% or 40% deduction for good time. As a result, assuming that the inmate was sentenced to 240 days and none was suspended, he or she could deduct 48 days if he or she did not have disciplinary violations and 96 days if he or she worked.

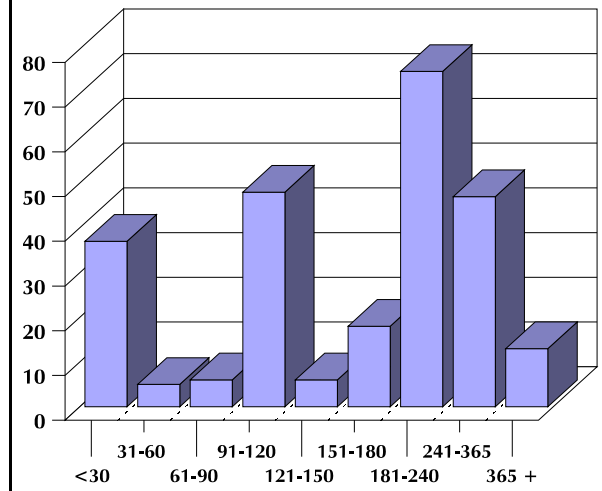
Scott County Community Jail and Alternatives Phase One Study
Section 10. Profile of Jail Inmates

Table 10.14 Length of Sentence

Total Days of Jail Sentences on all Charges Not Concurrent	#	%
30 days or less	37	14.5%
31-60 days	5	2.0%
61-90 days	6	2.4%
91-120 days	48	18.8%
121-150 days	6	2.4%
151-180 days	18	7.1%
181-240 days	75	29.4%
241-365 days	47	18.4%
More than 365 days	13	5.1%
Total	255	100.0%
Average		204.24
Median		240
Minimum		1
Maximum		730
Total Days /Yrs of Prison Sentences on all Charges Not Concurrent	#	%
5-10 years	18	75.0%
More than 10 years	6	25.0%
Total	24	100.0%
	Days	Years
Average	3,881	10.63
Median	2,220	6
Minimum	1,825	5
Maximum	18,250	50

Long-term inmates had an average length of stay of 137.68 days, with a median length of stay of 131 days. Length of stay ranged from a low of 30 to a high of 466 days. About one-third of long-term inmates stay from 121 to 150 days. The group whose length of stay is unknown includes individuals who were in custody at the time when the information was gathered.

Figure 10.15 Jail Sentences



The average jail sentence was 204.24 days, and the median was 240 days. The sentence ranged from a low of 1 day to a high of 730 days. While it is not possible to serve 730 days in the jail, portions of the consecutive sentences which led to 730 days could have been suspended. The average prison sentence was 10.63 year. 75% of prison sentences were from 5-10 years.

Length of Stay

Table 10.15 Length of Stay

LOS	#	%	Adj %	Cum %
31-60 days	45	7.5%	8.5%	8.5%
61-90 days	40	6.7%	7.6%	16.1%
91-120 days	105	17.5%	19.9%	36.1%
121-150 days	173	28.9%	32.8%	68.9%
151-180 days	72	12.0%	13.7%	82.5%
181-270 days	76	12.7%	14.4%	97.0%
271-365 days	13	2.2%	2.5%	99.4%
> 365 days	3	0.5%	0.6%	100.0%
Unknown	72	12.0%		
Total	599	100.0%		
Average				137.79
Median				131
Minimum				30
Maximum				466

Scott County Community Jail and Alternatives Phase One Study
Section 10. Profile of Jail Inmates

Figure 10.16 Length of Stay

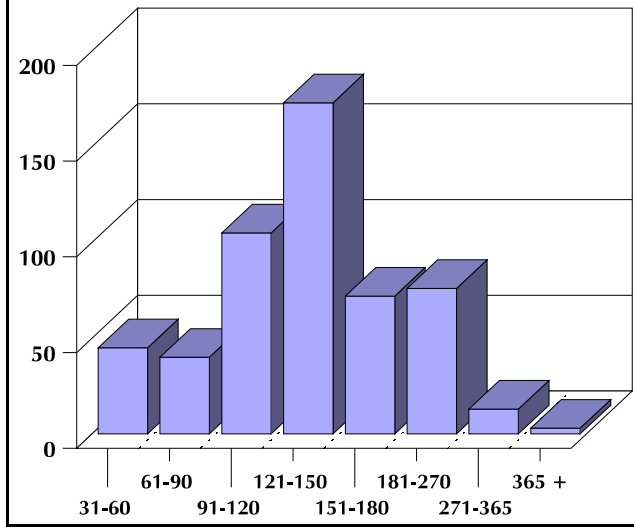


Table 10.16 Bed Days by Charge Type

Charge Type	Bed Days	%
Persons	20,008	27.1%
Property	13,264	18.0%
Forgery, fraud	2,946	4.0%
Alcohol	2,647	3.6%
Drugs	8,630	11.7%
DUS, DWB, No DL	2,598	3.5%
FTA	12,544	17.0%
Hold/detainer	6,649	9.0%
Violations	2,963	4.0%
Sex Offense (Prostitution)	617	0.8%
All Other	835	1.1%
	73,701	100.0%

Long-term inmates who are charged with crimes against persons use just over 25% of the bed space; long-term property offenders account for 18% of the space use. Individuals held for Failure to Appear account use about 17% of the bed space use. Drug offenders account for about 11% of the bed space use.

History with Scott County Jail

Figure 10.17 History with Scott County Jail

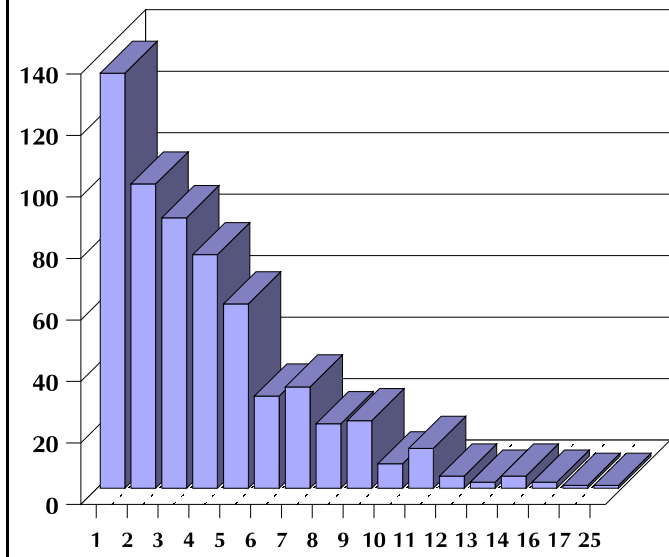


Table 10.17 History with Scott County Jail

Bookings	#	%	Bookings	#	%
1	135	22.5%	10	8	1.3%
2	99	16.5%	11	13	2.2%
3	88	14.7%	12	4	0.7%
4	76	12.7%	13	2	0.3%
5	60	10.0%	14	4	0.7%
6	30	5.0%	16	2	0.3%
7	33	5.5%	17	1	0.2%
8	21	3.5%	25	1	0.2%
9	22	3.7%	Total	599	100.0%

Just over 20% of these inmates had not been booked at the Scott County Jail prior to this booking according to the jail's information system which goes back to 1989. The remaining 80% of this group had an average of 4.01 bookings, with a range from 1 to 25.

Scott County Community Jail and Alternatives Phase One Study
Section 10. Profile of Jail Inmates

Behavior While in Custody

Correctional Perspective

Table 10.18 Correctional Behavioral Issues

Correctional Behavior Issues	Yes	%	No	%	Total
Did the inmate have disciplinary violations?	164	27.4%	435	72.6%	599
Should the inmate have been placed in administrative segregation?	46	7.7%	553	92.3%	599
Was the inmate assaultive to staff?	39	6.5%	560	93.5%	599
Was the inmate assaultive to inmates?	81	13.5%	518	86.5%	599
Was the inmate an escape risk?	67	11.2%	532	88.8%	599
Was the inmate vulnerable to other inmates?	42	7.0%	557	93.0%	599
Should the inmate have been placed in protective custody?	21	3.5%	578	96.5%	599
Was the inmate an inmate worker?	54	9.0%	545	91.0%	599

Table 10.19 Medical/Mental Health Perspective

During incarceration	#	%	
Medical treatment	205	34.2%	
No medical treatment	394	65.8%	
Total	599	100.0%	
Type of medical treatment		% of inmates treated	% of total
dental	80	39.0%	13.4%
x-rays	90	43.9%	15.0%
lab work	80	39.0%	13.4%
Dr visit	11	5.4%	1.8%
Hospitalized	#	%	
Yes	8	1.3%	
No	591	98.7%	
Total	599	100.0%	
Mental Health problems	#	%	LOS
Yes	91	15.2%	125.38
No	508	84.8%	122.80
	599	100.0%	

Staff of the Sheriff's Department Inmate Services were asked to review the long-term inmates to determine what their period of incarceration was like. Just over 25% of long-term inmates had a disciplinary violation during their period of detention. About 15% were assaultive to other inmates and about 10% were escape risks. Between 5% and 10% should have been placed in administrative segregation, were assaultive to staff, or were vulnerable to other inmates. About 9% were inmate workers.

Medical/Mental Health Perspective

Health and mental health providers were asked to review the same group of long term inmates to determine the type of treatment that they received while in custody. About one-third of long-term inmates received medical treatment while they were in custody. The most common form of treatment was x-rays, closely followed by dental and lab work. About one percent of these inmates were hospitalized during their period of incarceration. About 15% of these inmates had significant mental health problems. This

percentage is very consistent with national findings regarding the proportion of mentally ill inmates in local jails.

Scott County Community Jail and Alternatives Phase One Study
Section 10. Profile of Jail Inmates

Table 10.20 Medications for Long-term Inmates

On medication	#	%	
Yes	234	39.1%	
No	365	60.9%	
	599	100.0%	
Type of medication	#	% of medications	% of total
analgesic/anti-inflammatory	51	21.8%	8.5%
antibiotic	60	25.6%	10.0%
Psychotropic	52	22.2%	8.7%
diabetes	4	1.7%	0.7%
drug withdrawal	6	2.6%	1.0%
GI	29	12.4%	4.8%
GU	3	1.3%	0.5%
HTN/Cardiac	19	8.1%	3.2%
Other (UTT, GYN)	53	22.6%	8.8%
Respiratory	15	6.4%	2.5%
Seizure	9	3.8%	1.5%
Topical	10	4.3%	1.7%

About 40% of long-term inmates received some type of medication while they were in custody. The most common type of medication was an antibiotic, but just over 20% of the inmates who received medications received either an psychotropic, an analgesic/anti-inflammatory, or other type of treatment, typically GYN services.

Conclusion

1. This population is different from the profile of all inmates who are held at the facility in the following ways:
 - a. They are somewhat more likely to be from out of State although most (75%) live in Iowa.
 - b. Their average number of charges is 3.29 - much higher than the average for all bookings.
 - c. They are much more likely to have multiple cases pending (1.97 cases per inmate in this group).
 - d. They are equally likely to have been arrested for a failure to appear. This is the largest single reason for which these individuals were booked.
 - e. They are more likely to be held for a person, property or drug offense.
 - f. The level at which bond is set is considerably higher - an average of \$58,911.
 - g. They were more likely to have been booked at the jail previously - an average of 4.01 bookings per inmate since 1989.
 - h. There is some indication that this population is harder to manage - from both a correctional and a medical/mental health perspective.
2. This is the population that Scott County will have to impact in order to continue to manage its jail population.