

Section 9. Profile of Jail Admissions

Introduction

The data on which this section is based comes directly from the Offender Tracking system. It provides information about 5,799 bookings and releases which occurred in 2000. Because the data was provided electronically, it was not necessary to create a sample.

This section answers the question, "Who goes to jail in Scott County?" This section is a good test population for considering the potential for alternatives *to* incarceration, since all people who go through the jail either become or are the result of the work of the other criminal justice agencies.

Length of Stay, Rate of Release and Bed Days

Table 9.1 Length of Stay (LOS) and Rate of Release

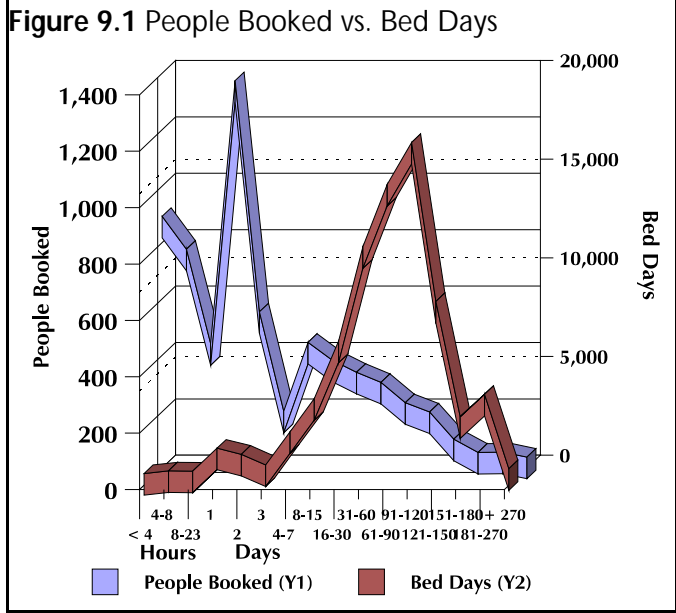
LOS Group	#	%	Cum %	Bed Days	%	Cum %
< 4 hrs	855	14.7%	14.7%	56	0.1%	0.1%
4-8 hrs	738	12.7%	27.5%	188	0.3%	0.3%
8-23 hrs	404	7.0%	34.4%	178	0.2%	0.6%
1 day	1,336	23.0%	57.5%	1,339	1.8%	2.3%
2 days	516	8.9%	66.4%	1,032	1.4%	3.7%
3 days	164	2.8%	69.2%	492	0.7%	4.4%
4-7 days	408	7.0%	76.2%	2,183	2.9%	7.3%
8-15 days	345	5.9%	82.2%	3,855	5.1%	12.4%
16-30 days	302	5.2%	87.4%	6,771	9.0%	21.4%
31-60 days	266	4.6%	92.0%	11,549	15.4%	36.7%
61-90 days	194	3.3%	95.3%	14,706	19.5%	56.3%
91-120 days	161	2.8%	98.1%	16,823	22.4%	78.7%
121-150 days	65	1.1%	99.2%	8,766	11.7%	90.3%
151-180 days	18	0.3%	99.5%	2,933	3.9%	94.2%
181-270 days	19	0.3%	99.9%	4,062	5.4%	99.6%
271-365 days	1	0.0%	99.9%	296	0.4%	100.0%
> 365 days	0	0.0%	99.9%			
Unknown	7	0.1%	100.0%			
Total	5,799	100.0%		75,228	100.0%	
Average LOS = 12.99 days						
Minimum LOS = less than 15 minutes						
Maximum LOS = 296 days						

Not all inmates stay in custody the same amount of time. Length of stay is an average of how many days each inmate stays in the jail. Rate of release is a statistic which takes each inmates' length of stay and arranges it as a frequency distribution showing how many inmates fall into each group.

The easiest way to understand bed days is to think of a one bed jail. In a year, that jail could provide 365 bed days; one inmate could stay 365 days, or 365 inmates could each stay one day. Bed days is the sum of the time each inmate spends in custody. By adding cumulative percent, it is easy to see how quickly people move through the jail as well as the groups who are using the most space.

The average length of stay of all bookings in 2000 was 12.99 days. The shortest length of stay was less than 15 minutes and the longest was 296 days.

**Scott County Community Jail and Alternatives Phase One Study
Section 9. Profile of Jail Admissions**



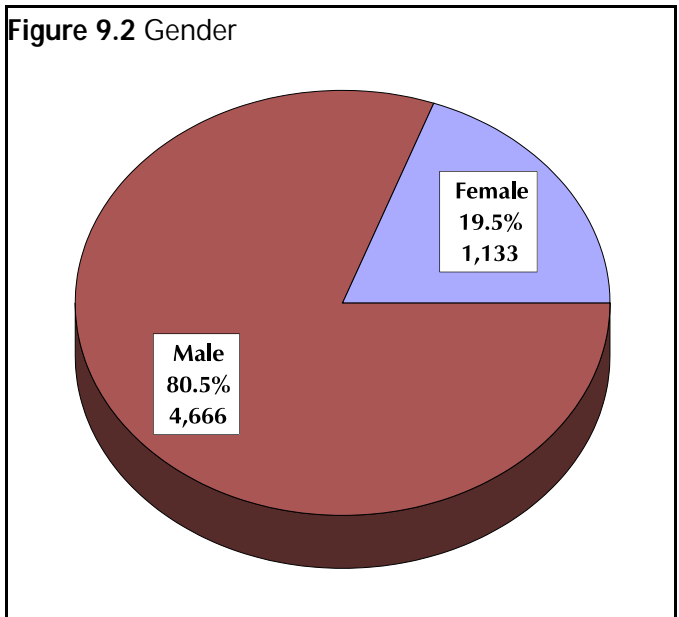
34% of all people admitted last year were released in less than 24 hours. More than half (57%) were released in one day or less; 66% were released in two days or less. If an inmate is not released within two days, the odds increase that he or she will stay in custody. 75% are released within 1 week, and 87% are released within a month.

Looking at bed days, however, presents quite a different story. The inmates who stay for longer periods of time account for more jail beds. For example, only 13% of inmates stay longer than 30 days, but those inmates account for 79% of the bed days. Only 8% of inmates stay longer than 60 days, but they account for 73% of the bed days. This has significant ramifications for future population

management efforts. Alternatives which are currently in place have very effectively reduced the length of stay of those individuals who are going to be released; parallel efforts have focused on expediting the movement of long term inmates who need to be in jail. What Figure 9.1 shows is that the easy targets for population management are gone, and that efforts to maintain the jail population at current levels must begin to focus on the long-term jail population. Section 10 of this document looks at the long-term population in more detail.

Demographics

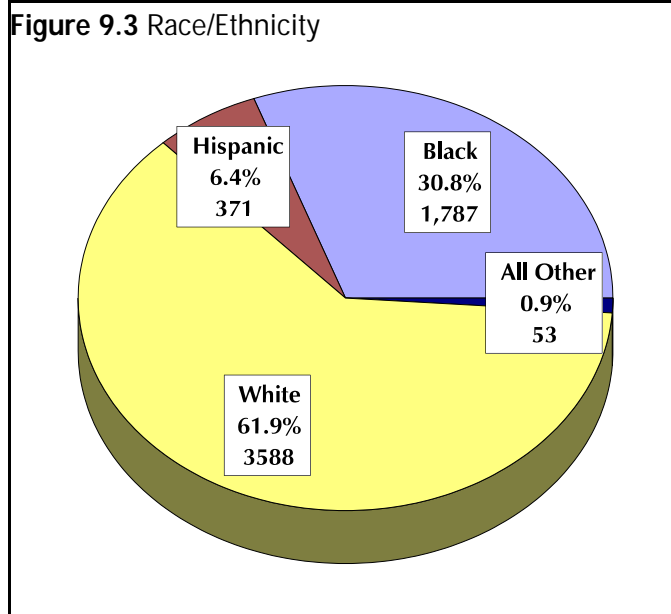
Gender



In 2000, about 20% of bookings were females. Section 4 noted that females account for about 15% of the average daily population. Looking at these two factors together, one possible conclusion is that females do not stay quite as long as males.

Scott County Community Jail and Alternatives Phase One Study
Section 9. Profile of Jail Admissions

Race/Ethnicity



62% of bookings were identified as white. The largest minority group is African- American (31%). Hispanics accounted for 6% of bookings. Section 4 indicates that about 45% of the average daily population is comprised of white inmates and 45% is comprised of African American inmates. This suggests that the length of stay of African-American inmates is longer. Table 9.2 shows length of stay of inmates held in the facility in 2000 by race,

Section 1 of this report discussed risk factors for criminal behavior and a national correctional phenomenon - minority over-representation in correctional facilities. In a sense it would be surprising if this phenomenon were not occurring in Scott County. It occurs as a result of higher rates of

9 LOS by Race

LOS by Race	LOS in Days
Asian	15.77
Black	19.72
Hispanic	16.31
Indian	16.27
White	9.26

arrest, but it also occurs as a result of longer lengths of stay. The length of stay of all of the minority populations is longer than the length of stay of whites. A major factor which determines length of stay is the ability to make bond or bail. Given the degree to which minority populations may be economically disadvantaged, the ability to make bond is decreased.

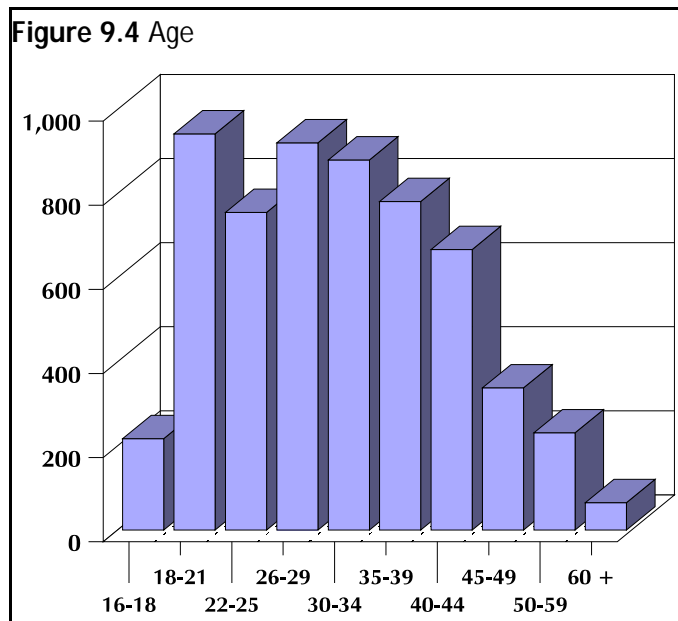
**Scott County Community Jail and Alternatives Phase One Study
Section 9. Profile of Jail Admissions**

Age

Table 9.3 Age

Age Group	#	%	Cum %
16-18	217	3.7%	3.7%
18-21	942	16.2%	20.0%
22-25	755	13.0%	33.0%
26-29	921	15.9%	48.9%
30-34	880	15.2%	64.1%
35-39	781	13.5%	77.5%
40-44	667	11.5%	89.0%
45-49	338	5.8%	94.9%
50-59	231	4.0%	98.8%
60 +	65	1.1%	100.0%
Unknown	2	0.0%	
Total	5,799	100.0%	
Average			31.36
Median			30
Minimum			16
Maximum			79

Figure 9.4 Age



The average age of inmates booked is 31.36 year, with a range from a low of 16 to a high of 79. The median age is 30 years. About one-third of inmates are under the age of 25.

**Scott County Community Jail and Alternatives Phase One Study
Section 9. Profile of Jail Admissions**

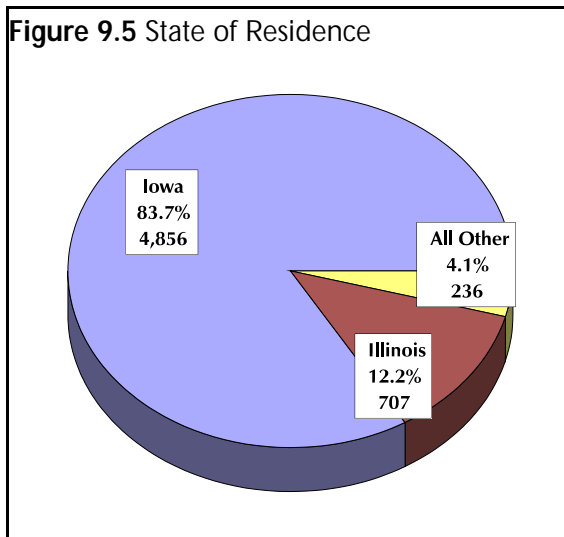
Residence

Table 9.4 State of Residence

State	#	%	State	#	%
Alaska	2	0.03%	New Mexico	2	0.03%
Alabama	1	0.02%	Nevada	1	0.02%
Arkansas	5	0.09%	New York	3	0.05%
Arizona	5	0.09%	Ohio	5	0.09%
California	19	0.33%	Oklahoma	1	0.02%
Connecticut	2	0.03%	Oregon	1	0.02%
Colorado	9	0.16%	Pennsylvania	3	0.05%
Florida	11	0.19%	South Carolina	2	0.03%
Georgia	2	0.03%	South Dakota	4	0.07%
Iowa	4,856	83.74%	Tennessee	6	0.10%
Illinois	707	12.19%	Texas	12	0.21%
Indiana	13	0.22%	Utah	3	0.05%
Kansas	7	0.12%	Virginia	4	0.07%
Kentucky	4	0.07%	Washington	1	0.02%
Louisiana	2	0.03%	Wisconsin	24	0.41%
Michigan	16	0.28%	Canada	3	0.05%
Minnesota	11	0.19%	Mexico	1	0.02%
Missouri	18	0.31%	None Listed	10	0.17%
Mississippi	5	0.09%	Total	5,799	100.00%
Montana	4	0.07%	Subtotals		
Maryland	1	0.02%	State Residents	4,856	83.74%
Nebraska	12	0.21%	Out of State	939	16.19%
North Carolina	1	0.02%	Non US	4	0.07%

About 84% of persons booked in 2000 lived in Iowa. 12% lived in Illinois. It is likely that being an out of state resident may make pretrial release more difficulty.

Figure 9.5 State of Residence



**Scott County Community Jail and Alternatives Phase One Study
Section 9. Profile of Jail Admissions**

Table 9.5 Scott County City and Iowa County of Residence

City	#	%	City	#	%
Bettendorf	450	7.8%	Cedar County	10	0.2%
Blue Grass	31	0.5%	Des Moines County	17	0.3%
Buffalo	33	0.6%	Linn County	19	0.3%
Davenport	3,682	63.5%	Wapello County	8	0.1%
Dixon	7	0.1%	Dubuque County	20	0.3%
Donohue	15	0.3%	Polk County	29	0.5%
Durant	5	0.1%	Johnson County	38	0.7%
Eldridge	57	1.0%	Jackson County	5	0.1%
LeClaire	82	1.4%	Black Hawk County	5	0.1%
Long Grove	14	0.2%	Lee County	12	0.2%
McCausland	9	0.2%	Henry County	5	0.1%
New Liberty	0	0.0%	Rock Island County IL	496	8.6%
Princeton	18	0.3%	Other Iowa County	80	1.4%
Walcott	28	0.5%	Out of State	451	7.8%
Park View	15	0.3%	Total	5,799	100.0%
Pleasant Valley	9	0.2%	Subtotals		
Riverdale	4	0.1%	All Scott County	4,459	76.9%
Muscatine County	61	1.1%	Scott County + Rock Island County	4,955	85.4%
Clinton County	84	1.4%			

Table 9.6 Zip Code (Davenport only)

Zip Code	#	%
52801	838	22.5%
52802	666	17.9%
52803	919	24.6%
52804	612	16.4%
52806	568	15.2%
52807	127	3.4%
Total	3,730	100.0%

About 76% of all persons booked in 2000 indicated they lived in Scott County; 85% indicated that they lived in Scott County or Rock Island County. About 64% of persons booked live in the City of Davenport. Residence within Davenport is broken down by zip code.

Scott County Community Jail and Alternatives Phase One Study
Section 9. Profile of Jail Admissions

Occupation

Table 9.7 Occupation

Occupation	#	%	Occupation	#	%
Agriculture, meat packing	103	1.8%	Governmental employee	6	0.1%
Labor	890	15.3%	Professional technical	139	2.4%
Construction trades	505	8.7%	Transportation (non-auto)	7	0.1%
Food Service/entertainment	624	10.8%	Technician	14	0.2%
Automotive	339	5.8%	Security	12	0.2%
Clerical	196	3.4%	All other	106	1.8%
Cashier, sales	3	0.1%	Inmate	9	0.2%
Telemarketing	50	0.9%	Military	10	0.2%
Factory	302	5.2%	Housewife, mother	45	0.8%
Warehouse, dock	49	0.8%	Self-employed	47	0.8%
Landscaping	65	1.1%	Retired	37	0.6%
Health care	81	1.4%	SSI/Disability	199	3.4%
Retail sales	62	1.1%	Student	125	2.2%
Janitorial, maintenance	171	2.9%	Unemployed	897	15.5%
Child care	35	0.6%	None	359	6.2%
Personal Services	100	1.7%	Not listed	100	1.7%
Accounting, insurance, real estate	24	0.4%	Unknown	37	0.6%
Communication and electronics	51	0.9%	Total	5,799	100.0%

About 15% of inmates indicate they work as unskilled laborers; about 11% indicate they work in food service and entertainment industries. Bus boys, fast food restaurants, waitresses, etc. were the most common occupation noted. About 6% work in garages, gas stations, auto parts, etc. Only 5% indicate they do factory work. About 15% indicated that they were unemployed, and an additional 6% said they had no occupation. If these two categories are combined, unemployment would be just under 25%. While this number might increase if employment were verified, this is a more employed inmate population than many noted by the consultant. This is a large low income, under-employed and unskilled population. As a result, income levels in this population will generally be low. Programmatically, in the long-term, this population needs education, job readiness, and vocational training.

**Scott County Community Jail and Alternatives Phase One Study
Section 9. Profile of Jail Admissions**

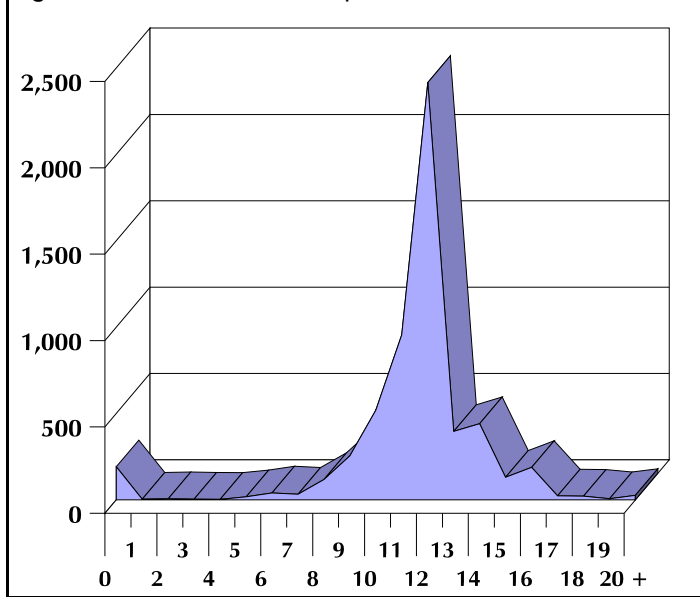
Educational Attainment

Table 9.8 Last Grade Completed

Last Grade Completed	#	%	Cum %
0	192	3.3%	3.3%
1	4	0.1%	3.4%
2	7	0.1%	3.5%
3	4	0.1%	3.6%
4	3	0.1%	3.6%
5	18	0.3%	3.9%
6	40	0.7%	4.6%
7	33	0.6%	5.2%
8	118	2.0%	7.2%
9	255	4.4%	11.6%
10	519	8.9%	20.6%
11	956	16.5%	37.1%
12	2,416	41.7%	78.7%
13	397	6.8%	85.6%
14	441	7.6%	93.2%
15	131	2.3%	95.4%
16	188	3.2%	98.7%
17	23	0.4%	99.1%
18	21	0.4%	99.4%
19	7	0.1%	99.6%
20 or more	26	0.4%	100.0%
Total	5,799	100.0%	
Average	12.42		
Median	12		
Minimum	0		
Maximum	20 +		

Most inmates are not veterans, but about 7% are.

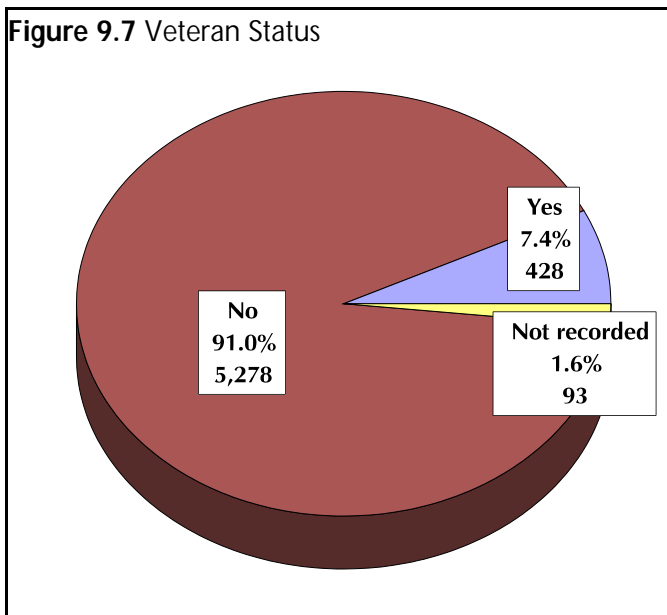
Figure 9.6 Last Grade Completed



Persons booked reported that they had completed an average of 11.42 years of education; the median last grade completed was 12. Education is one of the protective factors which help to minimize risk of involvement with drugs and crime. For the long-term population, basic education, in combination with other types of programs, could be helpful.

Veteran Status

Figure 9.7 Veteran Status



Scott County Community Jail and Alternatives Phase One Study
Section 9. Profile of Jail Admissions

Admission Information

Times Booked in 2000

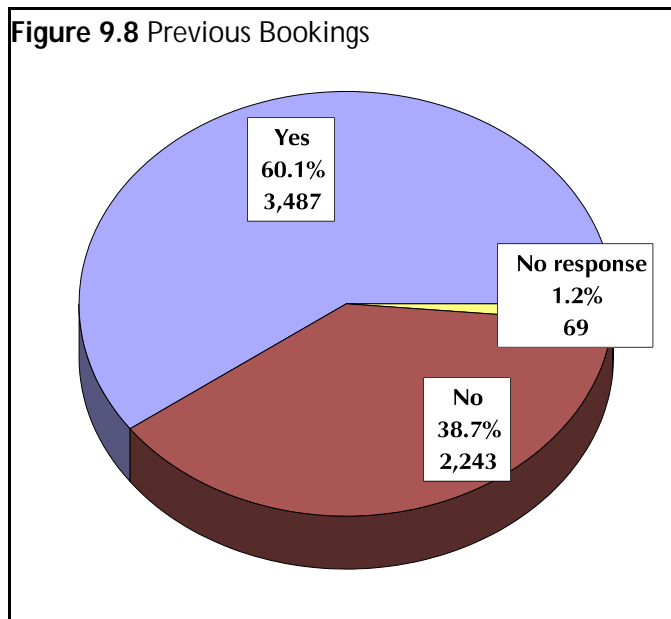
Table 9.9 Times Booked in 2000

Times Booked in 2000	# People	% People	# Bookings	% Bookings
1	3,449	78.5%	3,449	59.5%
2	668	15.2%	1,336	23.0%
3	174	4.0%	522	9.0%
4	63	1.4%	252	4.3%
5	22	0.5%	110	1.9%
6	16	0.4%	96	1.7%
7	3	0.1%	21	0.4%
8	0	0.0%	0	0.0%
9	0	0.0%	0	0.0%
10	0	0.0%	0	0.0%
11	1	0.0%	11	0.2%
Total	4,396	100.0%	5,797	100.0%
Average	1.32			
Minimum	1			
Maximum	11			

For the 5,797 bookings analyzed in this section, there were 4,396 people. 78% of people were booked once in 2000. The average number of times booked was 1.32, with a range from 1 - 11. There are many reasons why an individual may be booked more than once. They may be booked for more than one offense; they may be booked on a pre-trial basis and return at a later time to serve a sentence; they may also fail to comply with the conditions of their sentence or release and be returned to the facility on a warrant.

Previous Bookings at the Jail

Figure 9.8 Previous Bookings



During the booking process, inmates are asked if they have ever been booked at the jail before. 60% indicated that they had. Table 9.9 shows when they said that they had been booked at the Scott County Jail.

Scott County Community Jail and Alternatives Phase One Study
Section 9. Profile of Jail Admissions

Table 9.10 Year of Prior Booking

Year	#	%	Year	#	%
1950	1	0.0%	1989	5	0.2%
1970	2	0.1%	1990	15	0.6%
1972	3	0.1%	1991	20	0.8%
1974	1	0.0%	1992	15	0.6%
1979	2	0.1%	1993	23	0.9%
1980	7	0.3%	1994	49	2.0%
1982	3	0.1%	1995	57	2.3%
1983	4	0.2%	1996	76	3.1%
1984	1	0.0%	1997	101	4.2%
1985	4	0.2%	1998	220	9.1%
1986	4	0.2%	1999	882	36.3%
1987	3	0.1%	2000	925	38.1%
1988	6	0.2%	Total	2,429	100.0%

Most inmates who indicated that they had been booked before at the jail said that they were booked in either 1999 or 2000 (about 75% of all bookings). There were some inmates, who clearly had a long history with the facility.

Time of Booking

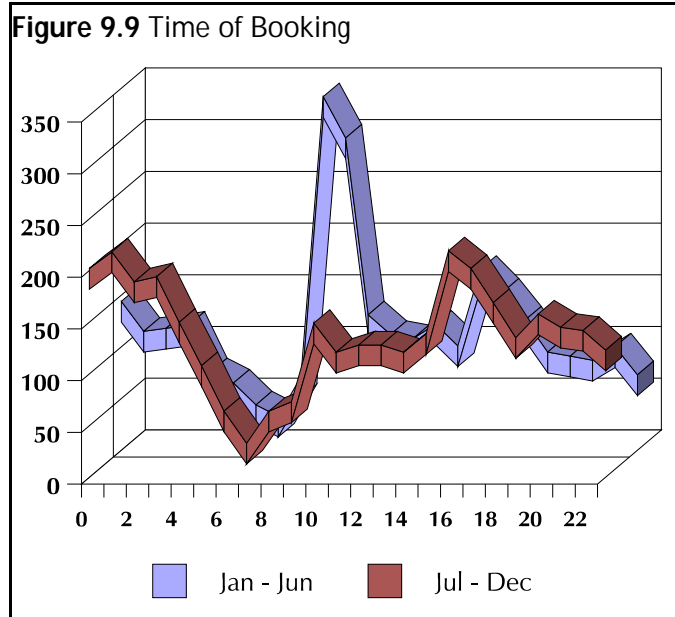


Figure 9.9 shows the impact of central booking on the time of booking. During the first half of the year, bookings peaked at about 11 AM when inmates from the City holding

Table 9.11 Time Booked

Time Booked	Jan - Jun	%	Jul - Dec	%	Time Booked	Jan - Jun	%	Jul - Dec	%
Midnight	134	5.0%	192	6.1%	12	102	3.8%	118	3.8%
1	105	3.9%	208	6.6%	13	98	3.7%	118	3.8%
2	108	4.1%	179	5.7%	14	112	4.2%	111	3.5%
3	111	4.2%	184	5.9%	15	91	3.4%	129	4.1%
4	66	2.5%	140	4.5%	16	165	6.2%	209	6.7%
5	55	2.1%	98	3.1%	17	143	5.4%	192	6.1%
6	34	1.3%	54	1.7%	18	116	4.4%	159	5.1%
7	23	0.9%	23	0.7%	19	85	3.2%	125	4.0%
8	61	2.3%	54	1.7%	20	81	3.0%	148	4.7%
9	332	12.5%	63	2.0%	21	77	2.9%	135	4.3%
10	292	11.0%	139	4.4%	22	90	3.4%	132	4.2%
11	121	4.5%	111	3.5%	23	63	2.4%	113	3.6%
					Total	2,665	100.0%	3,134	100.0%
Subtotals by shift									
Midnight - 8 AM	636	23.9%	1,078	34.4%					
8 AM - 4 PM	1,209	45.4%	843	26.9%					
4 PM - Midnight	820	30.8%	1,213	38.7%					

Scott County Community Jail and Alternatives Phase One Study
Section 9. Profile of Jail Admissions

facility were brought to the jail. Now, booking is distributed more evenly over the course of the day. About one-third of all people who are arrested are brought in between midnight and 8 AM; about 40% are brought in between 4 PM and midnight.

Day of the Week

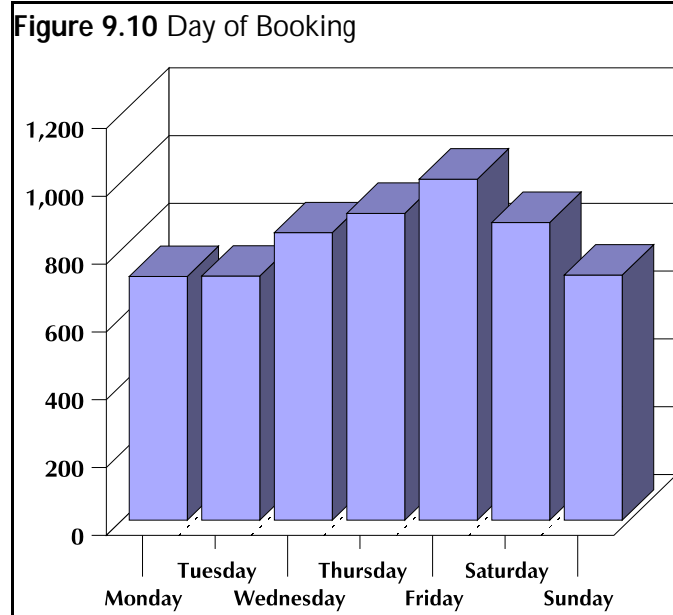


Table 9.12 Day of Booking

Day of the Week Booked	#	%
Monday	719	12.4%
Tuesday	720	12.4%
Wednesday	848	14.6%
Thursday	905	15.6%
Friday	1,006	17.3%
Saturday	878	15.1%
Sunday	723	12.5%
Total	5,799	100.0%
Even distribution = 1/7 = 14.3%		

Bookings are highest on Friday. Wednesday through Saturday accounts for 65% of all bookings. Fridays are often the busiest day for

booking.

Committing Agency

Table 9.13 Committing Agency

Committing Agency	#	%	Subtotals #	Subtotals %
Bettendorf PD	551	9.5%		
Bettendorf PD + warrant/other agency	78	1.3%	629	10.9%
Blue Grass PD	8	0.1%		
Blue Grass PD + warrant/other agency	3	0.1%	11	0.2%
Buffalo PD	28	0.5%		
Buffalo PD + warrant/other agency	4	0.1%	32	0.6%
Mittimus	1,063	18.3%		
Mittimus + warrant	47	0.8%	1,110	19.2%
Davenport PD	1,891	32.6%		
Davenport PD + warrant/other agency	323	5.6%	2,214	38.2%
Eldridge PD	39	0.7%		
Eldridge PD + warrant/other agency	8	0.1%	47	0.8%
Iowa State Patrol	184	3.2%		
Iowa State Patrol + warrant/other agency	21	0.4%	205	3.5%

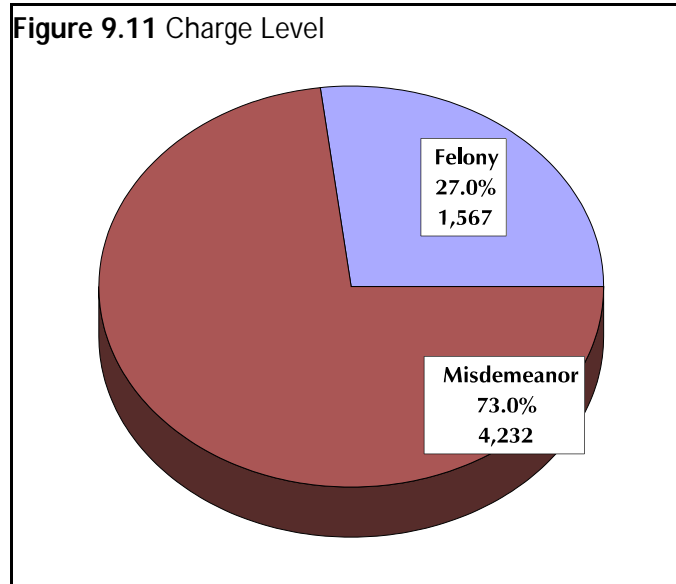
**Scott County Community Jail and Alternatives Phase One Study
Section 9. Profile of Jail Admissions**

Committing Agency	#	%	Subtotals #	Subtotals %
LeClaire PD	76	1.3%		
LeClaire PD + warrant/other agency	1	0.0%	77	1.3%
Scott County Sheriff	531	9.2%		
Scott County Sheriff + warrant/other agency	264	4.6%		
Scott County Sheriff + mittimus	29	0.5%		
Scott County Sheriff + Transport	69	1.2%	893	15.4%
Transcor (fugitives held for others)	107	1.8%		
Transcor + warrant	7	0.1%	114	2.0%
Federal Law Enforcement	185	3.2%	185	3.2%
Walcott PD	35	0.6%		
Walcott PD + warrant/other agency	0	0.0%	35	0.6%
WRC	16	0.3%		
WRC + warrant	1	0.0%	17	0.3%
Bondsman	8	0.1%		
Bondsman + warrant	3	0.1%	11	0.2%
Other warrant	20	0.3%		
Other Iowa State Agency	19	0.3%	39	0.7%
DCI	37	0.6%		
DCI + warrant	14	0.2%	51	0.9%
MEG	25	0.4%	25	0.4%
Princeton PD	6	0.1%	6	0.1%
RCF (probation violators)	64	1.1%		
RCF + warrant	5	0.1%	69	1.2%
Other law enforcement agency	23	0.4%		
Other Law enforcement agency + warrant	3	0.1%	26	0.4%
Other	3	0.1%	3	0.1%
Total	5,796	100.0%	5,796	

Davenport PD is the committing agency in more than one-third of all bookings. About 19% of all persons booked came to jail on a mittimus (a court order which directs the individual to report to jail to serve a sentence). The Sheriff's Department is the committing agency on about 15% of bookings. Bettendorf PD is the committing agency on just over 10% of other cases. This pattern is also changing as a result of the central intake system. During the 1st half of the year, Davenport was the committing agency on 30% of the cases; during the 2nd half of the year, Davenport was the committing agency on 50% of the cases.

Charge Information

Charge Level



The Offender Tracking System does not distinguish between simple, serious and aggravated misdemeanors. About 27% of persons booked are charged with felonies. The remainder are charged with various levels of misdemeanor offenses. The central intake system has not had an impact on these proportions.

Specific Charge

The most serious charge was often the charge listed first, but not always. The consultant reviewed all charges: felonies were rated as more serious than misdemeanors, crimes against persons were rated as more serious than other offenses, and offenses which have the potential to harm self or others were

rated as more serious. Appendix I lists the most serious charge on which the person was booked. The most common reason for booking was failure to appear (17% of all bookings). The most common charge was OWI 1st (10% of all bookings). Domestic abuse was the most common person offense (7%). The most common property offense was theft 5 (3%). About 4% of bookings were for intoxication. Table 9.13 categorizes these offenses.

Table 9.14 Charge Categories

Charge Category	#	%	Charge Category	#	%
Crimes against persons	1,175	20.3%	Prostitution	24	0.4%
Crimes against property	759	13.1%	RCF 72 hour hold	45	0.8%
Weapons violations	26	0.4%	Safekeeping	60	1.0%
Forgery, fraud	83	1.4%	Violation of domestic/custodial order	85	1.5%
Drug offense	316	5.4%	Drive barred, suspended, revoked, no license	238	4.1%
OWI	757	13.1%	Moving traffic violation	34	0.6%
Other alcohol	277	4.8%	Standing traffic violation	35	0.6%
Detainer	468	8.1%	Hearing	30	0.5%
Contempt	84	1.4%	Interfere w/official acts	43	0.7%
FTA	984	17.0%	Escape	8	0.1%
Disorderly conduct	96	1.7%	All Other	40	0.7%
Parole violation	32	0.6%	Unknown	1	0.0%
Probation violation	99	1.7%	Total	5,799	100.0%

Scott County Community Jail and Alternatives Phase One Study
Section 9. Profile of Jail Admissions

Crimes against persons account for 20% of all bookings. Failures to appear are the next largest charge group (17%). Crimes against property and all OWI's each account for 13% of bookings. Detainers (holds without new charges) account for 8% of all bookings, while driving while barred, suspended, revoked, etc. account for just under 5% of bookings.

When all charges are considered, about one-third of all persons booked had some drug or alcohol offense included; 23% had an alcohol charge, and 9% had a drug charge. When all charges are considered about 25% had at least one offense against a person.

Failures to Appear

Table 9.15 FTA Type and Original Offense

Type of Supervision	#	%
Pretrial Release (Supervised & Unsupervised)	61	6.2%
Unsupervised	473	48.1%
Released on citation previously	248	25.2%
District Court/Civil Contempt	16	1.6%
Other/Unable to Determine	168	17.1%
On cash bond/Bondsmen	12	1.2%
From Court Ordered Release	6	0.6%
Total	984	100.0%
Type of Offense	#	%
Crimes against persons	146	14.8%
Crimes against property	171	17.4%
Weapons violations	7	0.7%
Forgery, fraud	12	1.2%
Drug offense	113	11.5%
OWI	124	12.6%
Other alcohol	17	1.7%
Contempt	2	0.2%
FTA	16	1.6%
Disorderly conduct	12	1.2%
Probation violation	3	0.3%
Prostitution	9	0.9%
Violation of domestic/custodial order	3	0.3%
Drive barred, suspended, revoked, no license	296	30.1%
Moving traffic violation	17	1.7%
Standing traffic violation	4	0.4%
Hearing	0	0.0%
Interfere w/official acts	22	2.2%
All Other	10	1.0%
Total	984	100.0%

Because failures to appear were a significant group, some additional detail may be useful. Table 9.15 provides information about the individual's status prior to the FTA and what the original charge was. Unsupervised probation was sometimes noted in the charge entry, but a number of charges which would have typically received unsupervised probation did not. As a result, this information has been manually checked.

**Scott County Community Jail and Alternatives Phase One Study
Section 9. Profile of Jail Admissions**

Figure 9.12 Status Before FTA

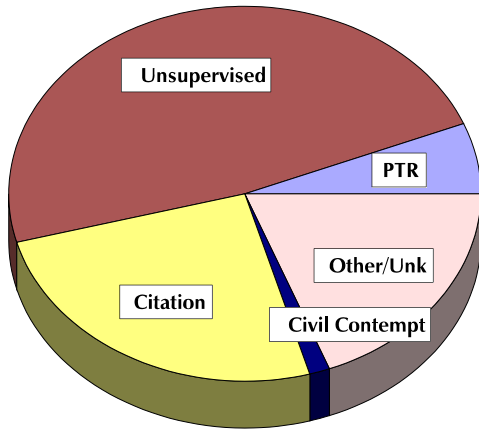
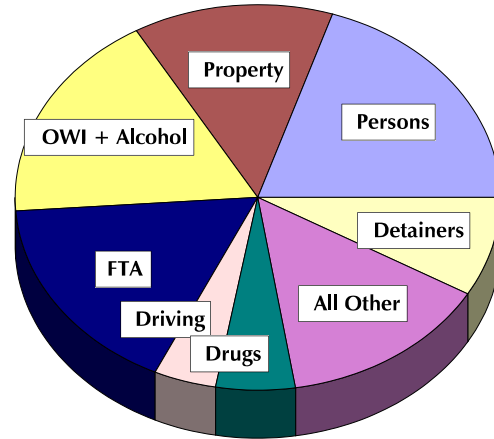


Figure 9.13 FTA Offense by Category



The most common original charge was driving while barred, suspended, revoked or otherwise without a license (30%). 15% were for a crime against a person, most often domestic violence. 13% were for OWI and 12% were for a drug offense.

Number of Charges (this Booking)

Table 9.16 Number of Charges (this Booking)

# of charges	#	%
1	3,861	66.6%
2	1,084	18.7%
3	486	8.4%
4	202	3.5%
5	97	1.7%
6	34	0.6%
7	19	0.3%
8	6	0.1%
9	4	0.1%
10	4	0.1%
12	1	0.0%
15	1	0.0%
Total	5,799	100.0%
Average	1.60	12.5%
Minimum	1	
Maximum	15	

About two-thirds of the individuals booked were arrested on only one charge. The average number of charges was 1.6 with a range from 1 to 15.

Health Screening

All individuals who are booked using the regular booking process at the jail completed a voluntary health screening. Table 9.17 provides a summary of responses to the questions asked.

**Scott County Community Jail and Alternatives Phase One Study
Section 9. Profile of Jail Admissions**

Table 9.17 Health Screening Responses

Health Screening	Yes		No		Not reported		Total
	#	%	#	%	#	%	
Any injuries prior to booking?	555	9.6%	5,175	89.2%	69	1.2%	5,799
Hospitalized before admission?	300	5.2%	5,430	93.6%	69	1.2%	5,799
Need medical attention?	236	4.1%	5,494	94.7%	69	1.2%	5,799
Medical History							
Coughed up blood?	21	0.4%	5,709	98.4%	69	1.2%	5,799
Attempted suicide	298	5.1%	5,432	93.7%	69	1.2%	5,799
Been treated for a mental condition?	404	7.0%	5,326	91.8%	69	1.2%	5,799
Inmate response to self-report questions regarding whether they have now or have ever had:							
Asthma?	738	12.7%	4,992	86.1%	69	1.2%	5,799
Hernia?	131	2.3%	5,599	96.6%	69	1.2%	5,799
High blood pressure?	466	8.0%	5,264	90.8%	69	1.2%	5,799
Stomach problems/ulcers?	288	5.0%	5,442	93.8%	69	1.2%	5,799
Pain/pressure in heart?	292	5.0%	5,438	93.8%	69	1.2%	5,799
Head injuries?	450	7.8%	5,280	91.1%	69	1.2%	5,799
Fracture?	754	13.0%	4,976	85.8%	69	1.2%	5,799
Epilepsy?	211	3.6%	5,519	95.2%	69	1.2%	5,799
Kidney problems?	136	2.3%	5,594	96.5%	69	1.2%	5,799
Frequent or severe headaches?	477	8.2%	5,253	90.6%	69	1.2%	5,799
Paralysis, numbness, weakness?	72	1.2%	5,658	97.6%	69	1.2%	5,799
Dizziness, fainting spells?	287	4.9%	5,443	93.9%	69	1.2%	5,799
Alcoholism?	545	9.4%	5,185	89.4%	69	1.2%	5,799
Syphilis, gonorrhea?	33	0.6%	5,697	98.2%	69	1.2%	5,799
Diabetes?	137	2.4%	5,593	96.4%	69	1.2%	5,799
Pregnancy, abortion, miscarriage?	751	66.3%	372	32.8%	10	0.9%	1,133
Allergies?	743	12.8%	4,987	86.0%	69	1.2%	5,799
Ever taken narcotics?	1,616	27.9%	4,114	70.9%	69	1.2%	5,799
Suicide Risk/Mental Health Assessment							
Have you ever tried to hurt yourself?	330	5.7%	5,376	92.7%	93	1.6%	5,799
Are you thinking of hurting yourself now?	76	1.3%	5,630	97.1%	93	1.6%	5,799
Have you ever attempted to kill yourself?	314	5.4%	5,392	93.0%	93	1.6%	5,799
Are you currently taking any medication?	1,170	20.2%	4,536	78.2%	93	1.6%	5,799
Had treatment at CADS?	884	15.2%	2,490	42.9%	2,425	41.8%	5,799

**Scott County Community Jail and Alternatives Phase One Study
Section 9. Profile of Jail Admissions**

Health Screening	Yes		No		Not reported		Total
	#	%	#	%	#	%	
Staff Assessment of Inmate - Does the inmate:							
show signs of depression?	292	5.0%	5414	93.4%	93	1.6%	5,799
appear overly anxious, afraid, angry?	437	7.5%	5269	90.9%	93	1.6%	5,799
appear unusually embarrassed, ashamed?	314	5.4%	5392	93.0%	93	1.6%	5,799
act or talk in a strange manner?	646	11.1%	5060	87.3%	93	1.6%	5,799
appear under the influence of alcohol or drugs?	1,177	20.3%	4529	78.1%	93	1.6%	5,799
have any indication of a prior suicide attempt?	138	2.4%	5568	96.0%	93	1.6%	5,799

About 10% of persons booked indicated that they had been injured prior to booking, and about 5% had been hospitalized before being brought to the jail. 5% indicated that they had in the past attempted suicide and 7% indicated that they had been treated for a mental condition. The most common illness identified was asthma (13%) and the most common injury was fractures (13%). Two-thirds of all females indicated that they had been pregnant, had an abortion, or miscarried. 30% indicated that they had taken narcotics and 10% indicated that they were alcoholics. Table 9.17 provides information about the type of narcotics taken. 20% indicated that they were taking medication of some type and 15% indicated that they had been treated at CADS.

In addition to the self-report screening, staff also assess the inmate. Staff believed that 5% were depressed and that 7.5% appeared unduly anxious, afraid or angry. 5% seemed unusually embarrassed or ashamed. These are potential indicators of suicide risk. About 11% of persons booked appeared to act or talk in a strange manner, and 20% appeared to be under the influence of drugs or alcohol.

Table 9.18 Type of Narcotics Taken

Type of drugs used	#	%	Adj %
Everything/most of them (unspecified)	119	2.1%	7.3%
Past history of multiple drug use but now clean	45	0.8%	2.8%
Alcohol	7	0.1%	0.4%
Cocaine	93	1.6%	5.7%
Crack	57	1.0%	3.5%
Marijuana	743	12.8%	45.8%
Marijuana and cocaine/crack	379	6.5%	23.4%
Marijuana and other hallucinogens	15	0.3%	0.9%
Methamphetamines	14	0.2%	0.9%
Heroin	16	0.3%	1.0%
Marijuana, cocaine/crack, and one other	53	0.9%	3.3%
Marijuana and methamphetames	13	0.2%	0.8%
Cocaine/crack and heroin	4	0.1%	0.2%
Cocaine/crack and methamphetamines	4	0.1%	0.2%
Three or more (specified)	32	0.6%	2.0%
Prescription	10	0.2%	0.6%

**Scott County Community Jail and Alternatives Phase One Study
Section 9. Profile of Jail Admissions**

Type of drugs used	#	%	Adj %
Other	1	0.0%	0.1%
Inmate doesn't know	5	0.1%	0.3%
None	11	0.2%	0.7%
Nothing listed	4,178	72.0%	
	5,799	100.0%	

Not all of the individuals who indicated that they had used drugs previous indicated the type. Of the 1,621 who did, marijuana was the most commonly specified drug (46%); marijuana and crack or cocaine was the next most common combination (23%).

Release Information

Time of Release

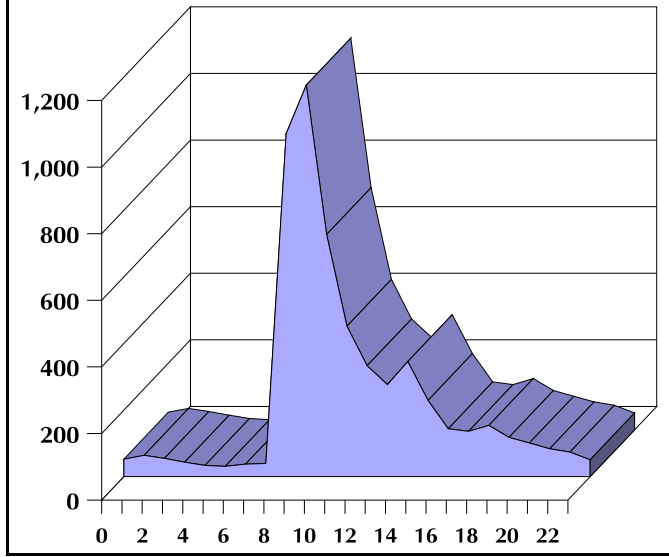
Table 9.19 Time of Release

Time Released	#	%	Time Released	#	%
Midnight	53	0.9%	13	277	4.8%
1	64	1.1%	14	346	6.0%
2	55	0.9%	15	229	3.9%
3	44	0.8%	16	144	2.5%
4	34	0.6%	17	136	2.3%
5	31	0.5%	18	154	2.7%
6	38	0.7%	19	118	2.0%
7	40	0.7%	20	101	1.7%
8	1,030	17.8%	21	84	1.4%
9	1,176	20.3%	22	74	1.3%
10	727	12.5%	23	51	0.9%
11	452	7.8%	99	8	0.1%
Noon	333	5.7%	Total	5,799	100.0%
Equal distribution = 1/24 = 4.2%	Subtotals by shift				
	Midnight - 8 AM		359	6.2%	
	8 AM - 4 PM		4,570	78.8%	
	4 PM - Midnight		862	14.9%	

Nearly 80% of all inmates are released between 8 AM and 4 PM. Nearly 50% of all inmates are released between 10 AM and Noon. This may be a function of when pre-trial release is available and the hours when court is held.

Scott County Community Jail and Alternatives Phase One Study
Section 9. Profile of Jail Admissions

Figure 9.14 Hour of Release

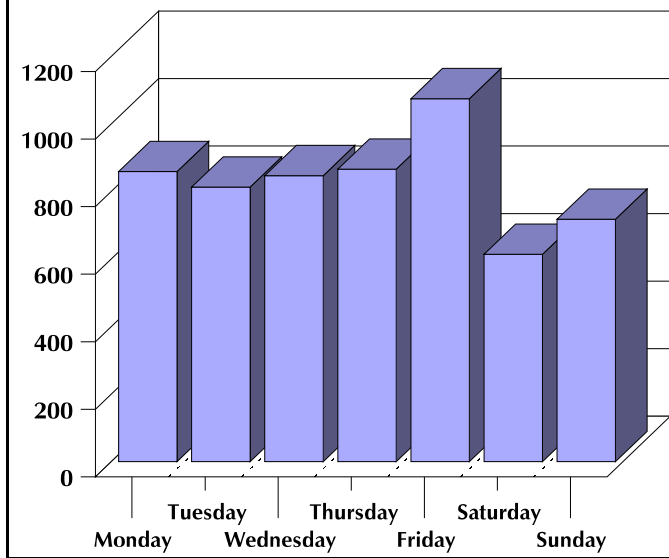


Day of Release

Table 9.20 Day of Release

Day of Release	#	%
Monday	859	14.8%
Tuesday	813	14.0%
Wednesday	847	14.6%
Thursday	866	14.9%
Friday	1,075	18.5%
Saturday	614	10.6%
Sunday	718	12.4%
Not listed	7	0.1%
Total	5,799	100.0%
Even distribution = $1/7 = 14.3\%$		

Figure 9.15 Day of Release



Inmates are least likely to be released on Saturdays and Sundays (10-12%) and most likely to be released on Fridays (19%).

Scott County Community Jail and Alternatives Phase One Study
Section 9. Profile of Jail Admissions

Means of Release

Table 9.21 Means of Release

Means of Release	#	%	Adj %
Sentence Served	860	14.7%	17.2%
Commercial Bondsman	800	13.8%	16.2%
Cash Bond	343	5.9%	7.0%
Cash Bond + other bond	4	0.1%	0.1%
Cash Bond + Pretrial Release	3	0.1%	0.1%
Court Order	883	15.2%	17.9%
Transfer to Other Agency	349	6.0%	7.1%
Pretrial Release	1,156	19.9%	23.4%
Pretrial Release + Bond or Court Order	10	0.2%	0.2%
Transfer to other DOC	36	0.6%	0.7%
Transfer to IMCC	201	3.5%	4.1%
Transfer to Oakdale	44	0.8%	0.9%
Transfer to RCF	49	0.8%	1.0%
Transfer to Transcorp	49	0.8%	1.0%
Transfer to US Marshall	132	2.3%	2.7%
Transfer to WRC	16	0.3%	0.3%
Dismissed	6	0.1%	0.1%
No pertinent comment noted	809	14.0%	
No comment	59	1.0%	
Total	5,799	100.0%	100.0%

Information in this table had to be extracted and then interpreted from text fields. About 15% of cases either had no comment or no comment pertinent to release. As a result adjusted percentages are reported. About 23% of inmates are released as a direct result of pretrial release. About 18% are released on a court order. 16% are released by a commercial bondsman and 7% are required to make a cash bond.

17% of those released had served a local jail sentence. Most of the rest of individuals booked were transferred to another law enforcement agency or jurisdiction.

Amount of Bond

Bond was calculated by adding the amount of bond required for each charge which was not marked as having its bond included with another charge. The average amount of bond was \$8,839.95;

the median bond was \$1,950. Bond ranged from a low of \$45.50 to a high of \$500,000.

**Scott County Community Jail and Alternatives Phase One Study
Section 9. Profile of Jail Admissions**

Table 9.22 Amount of Bond

Bond Amount	#	%	Adj %
No bond *	681	11.7%	15.9%
Under \$100	16	0.3%	0.4%
\$100-\$499	791	13.6%	18.4%
\$500-\$999	477	8.2%	11.1%
\$1,000-\$1,499	122	2.1%	2.8%
\$1,500-\$2,499	753	13.0%	17.6%
\$2,500-\$4,999	216	3.7%	5.0%
\$5,000-\$9,999	628	10.8%	14.6%
\$10,000-\$14,999	246	4.2%	5.7%
\$15,000-\$19,999	105	1.8%	2.4%
\$20,000-\$29,000	105	1.8%	2.4%
\$30,000-\$39,000	62	1.1%	1.4%
\$40,000-\$49,000	32	0.6%	0.7%
More than \$50,000	55	0.9%	1.3%
Not applicable	1,510	26.0%	
Total	5,799	100.0%	
* includes all holds as well as individuals for whom no bond was permitted			
Average			\$8,639.95
Median			\$1,950.00
Minimum			\$44.25
Maximum			\$500,000.00

Sentences were computed by adding the total number of days imposed in each consecutive sentence. Days do not reflect any good time or suspensions. The average jail sentence imposed was 52.54 days, with a range from 1 to 480 days. About one-third of the 993 inmates sentenced to local jail for whom a sentence was noted served 1-2 days. About 20% served 90 - 120 days. Prison sentences averaged 12.77 years, with a range from 2 - 80 years. About 40% of inmates were sentenced to 3-5 years and an additional 20% were sentenced to 2 years or less.

About 15% of persons booked were not permitted bond. This included both those individuals whose offense precluded bond as well as those individuals who have certain types of holds or detainers, such as DOC holds. The largest group of inmates (18%) had bonds between \$100 and \$500; these amounts may actually be fines. An additional 18% had bonds between \$1,500 and \$2,499.

Sentences

Table 9.23 Sentences

Sentence	#	%
Local Jail Days		
1-2 days	328	33.0%
3-5 days	49	4.9%
6-10 days	100	10.1%
11-20 days	23	2.3%
21-30 days	139	14.0%
31-60 days	43	4.3%
61-90 days	13	1.3%
91-120 days	216	21.8%
120-240 days	78	7.9%
More than 241 days	4	0.4%
	993	100.0%
Average jail sentence	52.54	
Minimum jail sentence	1	
Maximum jail sentence (1)	480	
(1) includes consecutive sentences		
Prison Time	#	%
2 yrs or less	50	20.7%
3-5 yrs	102	42.3%
6-10 yrs	59	24.5%
More than 10 years	30	12.4%
	241	100.0%
Average prison sentence	12.77	
Minimum prison sentence	2	
Maximum prison sentence	80	

Scott County Community Jail and Alternatives Phase One Study
Section 9. Profile of Jail Admissions

Conclusion

Because of the differential length of stay, there are really two populations held at the Jail. This section describes everyone who came through the door. It is thus a good measure of the individuals with whom the criminal justice system will be involved and for whom a variety of sanctions, including a broad spectrum of non-jail alternatives, are currently used. It also contains a long-term population who is much more problematic for the Scott County criminal justice system as well as the community.

1. People move through the jail in two distinct groups:
 - a. One group (about two-thirds of all people booked) stays two days or less,
 - b. The second group (about one-third of all people booked) stay more than two days, but account for 95% of all the jail time that is spent at the Scott County jail.
2. The population is predominantly male, with an average age of 31.36 year. About 45% are white and 45% are African-American.
3. 85% of all people booked live in Iowa. 65% of those who live in Scott County (75% of all bookings) live in Davenport.
4. Most are under-employed and relatively unskilled, with an associated low income status. Average educational attainment was 11.42 years.
5. The average number of times each of these individuals were booked in the year 2000 was 1.32 times. 60% indicated that they had been booked at the jail previously.
6. Just over 25% were charged with a felony. About 20% were charged with a crime against a person. 17% were charged with a failure to appear. 13% each were charged with OWI and crimes against property.
7. According to health screening information:
 - a. 5% indicated that they had attempted suicide in the past,
 - b. 7% indicated that they had been treated for a mental condition,
 - c. 30% indicated that they had taken narcotics,
 - d. 10% indicated they were alcoholics,
 - e. 15% indicated they had received treatment at CADS.
8. About 15% were released having served a sentence. About 5% were transferred to the Department of Corrections or one of Correctional Services facilities. About 6% were transferred to another law enforcement agency. The rest were released on pre-trial release, bond or a court-ordered release.
 - a. The average amount of bond for inmates who were eligible was \$8,639; the median amount of bond was \$1,950.
 - b. The average sentence imposed (without considering suspension) was 52.54 days.
 - c. The average prison sentence imposed (without considering suspension) was 12.77 years.