

Section 4. Scott County Incarceration Trends

Introduction

This section examines trends in the use of the jail. Data on admissions, releases and average daily population were taken from the records of the Sheriff's Department which are reported to the State of Iowa. These records come from the automated Inmate Tracking System as well as hard copy of reports provided to the State.

Admissions

Admissions are the number of people who are booked at the jail. Not all people who are arrested and taken to the jail for booking *remain* in custody, but, at a minimum, all spend some time in the booking room while they are being processed.

Annual Trends

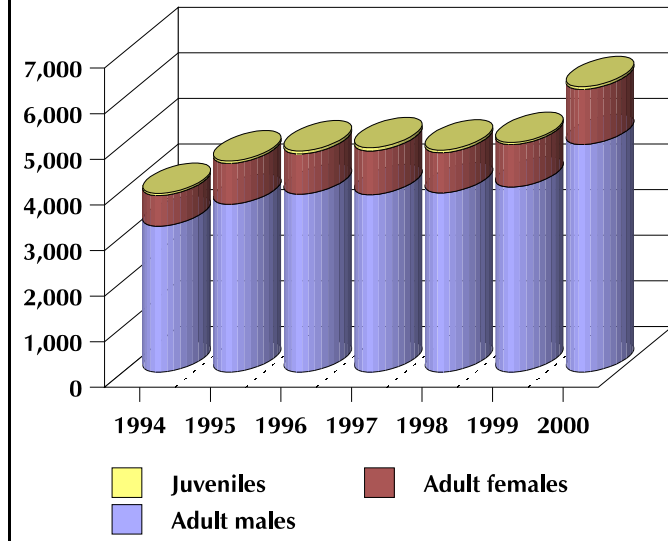
Table 4.1 Trend in Facility Admissions (1994 - 2000)

Year	Adult males	Adult females	Juvenile males	Juvenile females	Juveniles (Adult Waivers)	Total	% female
1994	3,200	672	0	6	46	3,924	17.1%
1995	3,680	898	0	0	51	4,629	19.4%
1996	3,901	882	0	0	65	4,848	18.2%
1997	3,889	960	0	0	71	4,920	19.5%
1998	3,929	880	0	0	58	4,867	18.1%
1999	4,058	931	0	0	45	5,034	18.5%
2000	4,989	1,209	0	0	59	6,257	19.3%
2001 EST ¹	4,844	1,508	0	0	56	6,408	
% change (94-00)	55.9%	79.9%			28.3%	59.5%	

¹ The estimate is based on data from January - April.

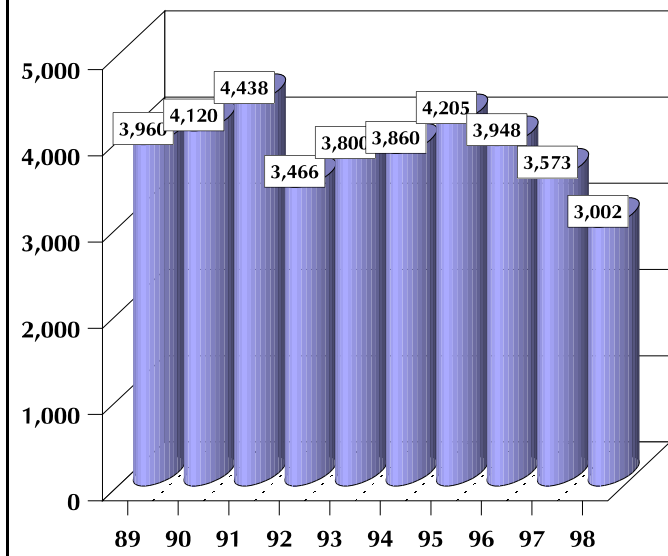
Scott County Community Jail and Alternatives Phase One Study
Section 4. Scott County Incarceration Trends

Figure 4.1 Annual Trend in Bookings (1994-2000)



Between 1994 and 2000, the total number of people booked at the Scott County Jail increased 59.5% from a low of 3,924 in 1993 to a high of 6,257 in 2000. Adult male admissions increased 56% from 3,200 in 1994 to 4,989 in 2000. Adult female admissions increased 80% from 672 in 1994 to 1,209 in 2000. Females have traditionally been just under 20% of admissions. Admissions of females in 2001 have been elevated; if they continue at the current rate, females will account for 23.5% of admissions in 2001. Juveniles waived to adult court have accounted for less than 1% of admissions. The most significant change in the number of admissions occurred between 1999 and 2000.

Figure 4.2 Admissions to Davenport Police Department Holding Facility



Until late 1999, the Davenport Police Department operated a small holding facility. All prisoners arrested by the Davenport PD were booked and held there pending release, court appearance or transfer to the County Jail. When the Davenport Police Department closed their holding facility in late 1999, these prisoners were booked at the County Jail. While many of these prisoners would have come to the county facility prior to 1999, after that time, all of them came to the County Jail. This is likely to be the cause of the increased number of bookings seen in 2000.

Monthly Trends

Table 4.2 Monthly Trend in Admissions

Mo/Yr	Adult males	Adult females	Juveniles (Adult Waivers)	Total	Mo/Yr	Adult males	Adult females	Juveniles (Adult Waivers)	Total
Jan-94	221	55		276	Jan-98	349	77	10	436
Feb-94	243	39	9	291	Feb-98	276	70	7	353
Mar-94	278	45	4	327	Mar-98	312	67	3	382
Apr-94	254	46	4	304	Apr-98	336	82	5	423
May-94	295	72	4	371	May-98	348	91	7	446
Jun-94	245	65	1	311	Jun-98	331	62	4	397
Jul-94	294	51	6	351	Jul-98	351	75	3	429

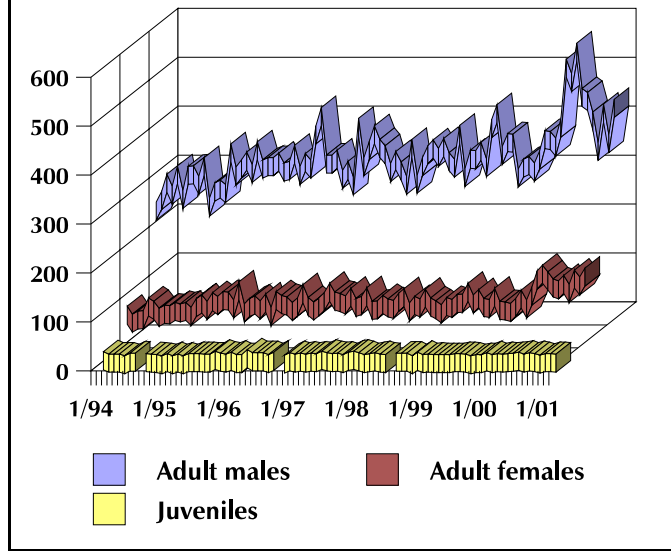
**Scott County Community Jail and Alternatives Phase One Study
Section 4. Scott County Incarceration Trends**

Mo/Yr	Adult males	Adult females	Juveniles (Adult Waivers)	Total	Mo/Yr	Adult males	Adult females	Juveniles (Adult Waivers)	Total
Aug-94	295	57	6	358	Aug-98	322	70		392
Sep-94	274	56	6	336	Sep-98	309	90	6	405
Oct-94	312	63	5	380	Oct-98	378	72	6	456
Nov-94	229	60	4	293	Nov-98	290	66	6	362
Dec-94	260	63	3	326	Dec-98	327	58	1	386
Jan-95	266	53	1	320	Jan-99	326	73	8	407
Feb-95	257	71	5	333	Feb-99	343	69	3	415
Mar-95	340	78	1	419	Mar-99	310	79	4	393
Apr-95	293	65	4	362	Apr-99	390	80	3	473
May-95	307	83	1	391	May-99	420	102	3	525
Jun-95	323	75	5	403	Jun-99	335	78	3	416
Jul-95	298	85	5	388	Jul-99	361	89	3	453
Aug-95	344	84	5	433	Aug-99	360	71	5	436
Sep-95	307	68	4	379	Sep-99	289	69	5	363
Oct-95	312	105	4	421	Oct-99	309	92	4	405
Nov-95	312	60	10	382	Nov-99	314	65	1	380
Dec-95	321	71	6	398	Dec-99	301	64	3	368
Jan-96	301	76	4	381	Jan-00	325	61	3	389
Feb-96	304	66	8	378	Feb-00	367	71	7	445
Mar-96	337	80	3	420	Mar-00	365	88	3	456
Apr-96	294	53	3	350	Apr-00	352	68	5	425
May-96	320	85	13	418	May-00	391	94	4	489
Jun-96	307	77	7	391	Jun-00	513	127	5	645
Jul-96	377	74	7	458	Jul-00	484	139	6	629
Aug-96	414	63	7	484	Aug-00	546	125	8	679
Sep-96	317	72	3	392	Sep-00	453	111	4	568
Oct-96	317	99	8	424	Oct-00	445	107	7	559
Nov-96	327	73		400	Nov-00	405	118	5	528
Dec-96	286	64	2	352	Dec-00	343	100	2	445
Jan-97	304	72	7	383	Jan-01	421	129	5	555
Feb-97	273	83	4	360	Feb-01	359	115	5	479
Mar-97	392	102	6	500	Mar-01	431	133	4	568
Apr-97	312	84	4	400					
May-97	345	81	6	432					
Jun-97	377	76	5	458					
Jul-97	349	92	10	451					
Aug-97	336	71	7	414					
Sep-97	300	75	5	380					

Scott County Community Jail and Alternatives Phase One Study
Section 4. Scott County Incarceration Trends

Mo/Yr	Adult males	Adult females	Juveniles (Adult Waivers)	Total	Mo/Yr	Adult males	Adult females	Juveniles (Adult Waivers)	Total
Oct-97	324	93	6	423					
Nov-97	303	65	3	371					
Dec-97	274	66	8	348					

Figure 4.3 Monthly Trend in Admissions



Juveniles waived to adult court have varied from a low of 0 to a high of 13 per month. Total admissions have ranged from a low of 276 per month (an average of 9.2 admissions per day) to a high of 679 (22.63 admissions per day). Female admissions have ranged from a low of 39 admissions to a high of 139 admissions per month. Male admissions have ranged from a low of 221 admissions to a high of 546 admissions per month.

The trend of total admissions is a moderately strong trend statistically ($r^2 = .46$). The trend in female admissions is weaker ($r^2 = .38$). The trend in male admissions is also moderately strong ($r^2 = .44$). None of these trends are strong enough to be good predictors of future admissions.

Figure 4.4 Seasonal Trend in Admissions

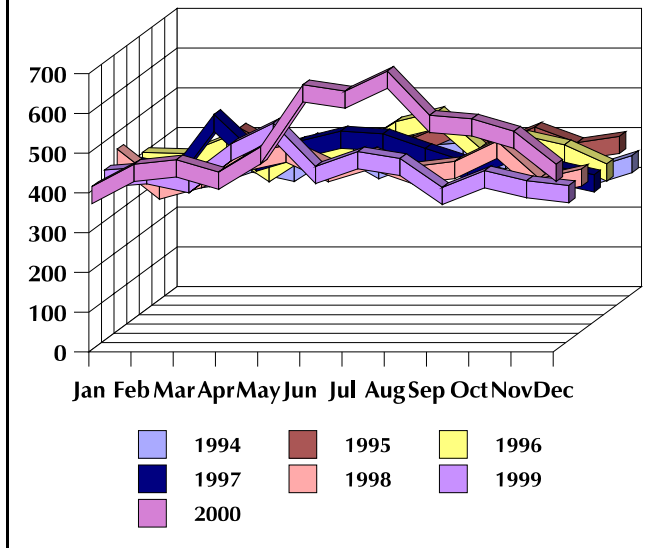


Figure 4.4 shows the seasonal trend in admissions for 1994 - 2000. For most of these years, the pattern is quite similar. However, in 2000, the trend shows a clear elevation in admissions beginning in May and continuing through September 2000.

Scott County Community Jail and Alternatives Phase One Study
Section 4. Scott County Incarceration Trends

Table 4.3 Seasonal Trends in Admissions

Year	Jan	Feb	Mar	Apr	May	Jun	Jul	Aug	Sep	Oct	Nov	Dec	Average
1994	276	291	327	304	371	311	351	358	336	380	293	326	327.00
1995	320	333	419	362	391	403	388	433	379	421	382	398	385.75
1996	381	378	420	350	418	391	458	484	392	424	400	352	404.00
1997	383	360	500	400	432	458	451	414	380	423	371	348	410.00
1998	436	353	382	423	446	397	429	392	405	456	362	386	405.58
1999	407	415	393	473	525	416	453	436	363	405	380	368	419.50
2000	389	445	456	425	489	645	629	679	568	559	528	445	521.42
2001	555	479	568										
% of Average													
1994	84.4%	89.0%	100.0%	93.0%	113.5%	95.1%	107.3%	109.5%	102.8%	116.2%	89.6%	99.7%	
1995	83.0%	86.3%	108.6%	93.8%	101.4%	104.5%	100.6%	112.2%	98.3%	109.1%	99.0%	103.2%	
1996	94.3%	93.6%	104.0%	86.6%	103.5%	96.8%	113.4%	119.8%	97.0%	105.0%	99.0%	87.1%	
1997	93.4%	87.8%	122.0%	97.6%	105.4%	111.7%	110.0%	101.0%	92.7%	103.2%	90.5%	84.9%	
1998	107.5%	87.0%	94.2%	104.3%	110.0%	97.9%	105.8%	96.7%	99.9%	112.4%	89.3%	95.2%	
1999	97.0%	98.9%	93.7%	112.8%	125.1%	99.2%	108.0%	103.9%	86.5%	96.5%	90.6%	87.7%	
2000	74.6%	85.3%	87.5%	81.5%	93.8%	123.7%	120.6%	130.2%	108.9%	107.2%	101.3%	85.3%	

In general, admissions are above average in May, July, August and October. Monthly admissions have been as high as 130% of the annual average and as low as 74% of the annual average.

Daily Admissions and Releases

Admissions and releases also vary by day. Table 4.4 shows admissions by day

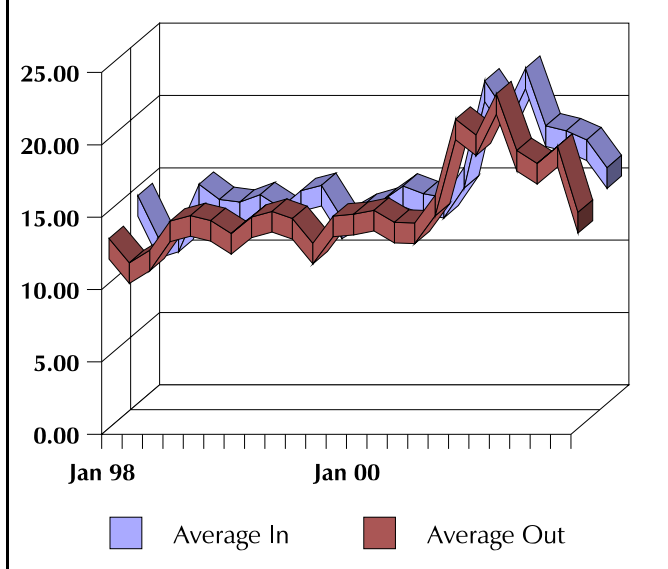
Table 4.4 Daily Admissions and Releases (1998 and 2000)

Month/Yr	800 Count		1600 Count		2400 Count		Monthly Total		Daily Average	
	In	Release	In	Release	In	Release	Total In	Total Release	Average In	Average Out
Jan-98	49	32	250	288	126	61	425	381	13.65	12.39
Feb-98	48	30	160	222	102	54	310	306	10.75	10.71
Mar-98	50	17	185	279	106	51	341	347	11.19	11.58
Apr-98	53	17	240	333	130	75	423	425	14.43	13.60
May-98	64	27	268	342	115	92	447	461	13.39	13.97
Jun-98	85	35	202	284	114	97	401	416	13.20	13.63
Jul-98	62	28	225	288	132	79	419	395	13.71	12.74
Aug-98	87	18	210	309	100	101	397	428	12.81	13.87
Sep-98	81	26	224	326	112	76	417	428	14.00	14.27
Oct-98	70	27	222	323	155	77	447	427	14.35	13.77
Nov-98	63	26	189	283	110	54	362	363	12.10	12.07
Dec-98	59	23	222	329	112	81	393	433	12.90	13.94
Jan-00	67	19	219	345	129	58	415	422	13.32	14.06
Feb-00	78	27	227	327	111	64	416	418	14.31	14.34
Mar-00	81	25	228	326	122	76	431	427	13.77	13.52

Scott County Community Jail and Alternatives Phase One Study
Section 4. Scott County Incarceration Trends

Month/Yr	800 Count		1600 Count		2400 Count		Monthly Total		Daily Average	
	In	Release	In	Release	In	Release	Total In	Total Release	Average In	Average Out
Apr-00	73	15	243	325	91	71	407	411	13.53	13.47
May-00	134	22	172	370	171	69	477	461	15.61	15.39
Jun-00	226	44	182	485	225	92	633	621	21.57	20.63
Jul-00	212	41	197	495	213	68	622	604	19.48	19.55
Aug-00	205	56	194	520	281	100	680	676	22.45	22.39
Sep-00	194	45	171	426	208	107	573	578	18.47	18.47
Oct-00	204	35	163	442	189	71	556	548	18.13	17.58
Nov-00	175	28	160	438	186	84	521	550	17.50	18.77
Dec-00	165	35	185	377	154	55	504	467	15.58	14.19

Figure 4.5 Average Admissions and Releases by Day



The average number of admissions per day has varied from a low of 10.75 in February 1998 to a high of 22.45 in August 2000. The average number of releases per day has varied from a low of 10.71 in February 1998 to a high of 22.39 in 2000. This data was taken from daily reports which were archived by the Sheriff's Department. In general, the daily number of admissions and releases are both higher in 2000 than they were in 1998. The most admissions on a single day was 63 on 12/6/2000 and the least was 0. The most releases on a single day was 50 on 8/18/2000.

Conclusions

1. The number of facility bookings was relatively stable at just under 5,000 per year until 2000 when the City of Davenport closed its holding facility. In 2000, it increased to 6,257. When the Scott County Jail became the central booking agency for the County, the number of people taken to the facility increased.
2. The jail's physical plant is discussed in greater detail in Section 11 of this document. Although the County has attempted to deal with the additional demand through the implementation of a variety of alternatives and through some modification of the physical plant, the current booking facility was not designed for the current volume of activities, and it does not accommodate it well.

Scott County Community Jail and Alternatives Phase One Study
Section 4. Scott County Incarceration Trends

Average Daily Population

Average daily population is computed by calculating a mathematic average of facility counts; this is most commonly done by using a count from a specified time. The State of Iowa, in their reporting process, has identified the minute after midnight of the first day of the month as the time when official counts are taken. However, jails are required to account for prisoners in their custody at each shift change. These counts have also been recorded by the Jail Tracking System. This section of the document uses information taken from the Jail Tracking System as well as the official reports submitted to the State of Iowa to provide information about trends in average daily population.

Count Variation by Time of Day

Table 4.5 Count Variation by Time of Day

Month/Yr	800 Count	1600 Count	2400 Count	Average for the Day	Average Range (1)
Jan-98	244.58	243.19	245.32	244.37	5.48
Feb-98	250.71	248.52	250.21	246.86	5.41
Mar-98	252.13	249.43	251.07	237.42	5.57
Apr-98	252.93	250.27	251.67	251.62	6.40
May-98	259.00	256.03	257.58	257.61	5.61
Jun-98	229.43	226.63	227.40	227.82	5.37
Jul-98	246.55	244.84	246.55	245.98	5.00
Aug-98	260.00	256.81	257.10	257.97	6.32
Sep-98	248.57	245.17	246.50	246.74	6.27
Oct-98	234.68	231.40	233.71	230.77	5.67
Nov-98	239.83	236.23	238.13	238.07	6.27
Dec-98	225.55	222.71	223.84	224.03	6.94
Jan-00	208.52	204.68	207.00	206.73	6.74
Feb-00	204.24	200.14	201.72	202.03	6.86
Mar-00	208.32	204.74	206.23	206.43	6.29
Apr-00	205.20	202.00	202.80	201.09	6.66
May-00	205.06	198.30	201.71	199.56	8.03
Jun-00	207.27	196.79	201.21	197.33	11.43
Jul-00	214.29	203.65	208.48	208.80	11.58
Aug-00	214.58	204.23	210.26	203.97	12.13
Sep-00	207.97	199.57	202.50	201.03	16.73
Oct-00	208.32	198.65	203.10	203.35	10.19
Nov-00	203.50	194.40	197.97	198.62	9.43
Dec-00	169.65	162.48	164.29	165.47	9.39

(1) This is the average difference in the high and low count each day.

Scott County Community Jail and Alternatives Phase One Study
Section 4. Scott County Incarceration Trends

Table 4.5 shows the average counts at 8 AM, 4 PM and midnight. Counts must include all prisoners in the facility, including those who are in the process of being booked. The consultant examined the Sheriff's Department's historical records for 1998 and 2000, automated and analyzed them to obtain these averages. The column labeled "Average for the Day" is the average of the three counts. Range is the difference between the highest and lowest count that day, and the average range is the average of the difference of the highest and lowest daily counts during that month. Figure 4.6 shows the trend in the three counts and Figure 4.7 shows the variations in the range between the highest and lowest of the counts on any given day.

Counts by Day of the Week

Table 4.6 Count Variation by Day of the Week

Day of the Week	1998	% of Annual Average	2000	% of Annual Average
Monday	243.12	100.3%	199.78	100.1%
Tuesday	241.23	99.5%	200.32	100.4%
Wednesday	242.08	99.9%	198.56	99.5%
Thursday	236.61	97.6%	198.19	99.3%
Friday	242.84	100.2%	194.89	97.7%
Saturday	246.75	101.8%	200.93	100.7%
Sunday	244.40	100.8%	203.08	101.8%
Annual Average	242.42		199.52	

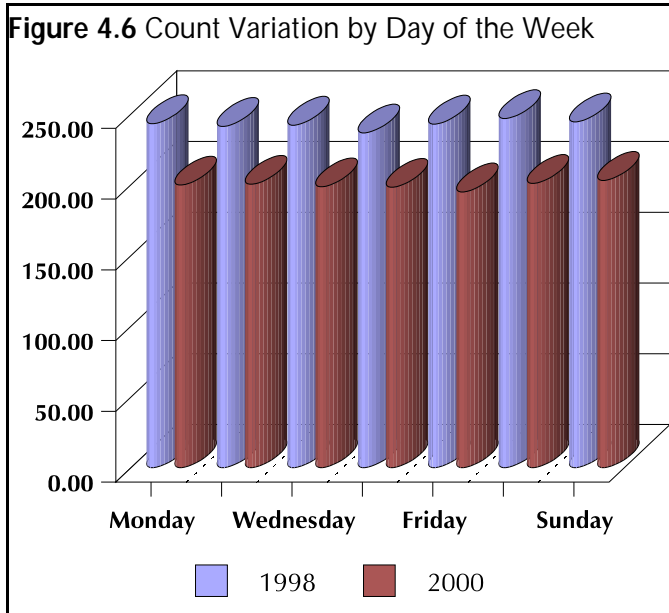


Figure 4.6 and Table 4.6 use the average of the three counts for each day to calculate an average by day of the week. Counts are very slightly below the average for the year on weekdays (Monday through Thursday in 1998 and Wednesday through Friday in 2000). This is the typical pattern, however, there is less variation in Scott County than in many locations.

CJAAC members indicate that there are at least two factors that have influenced this pattern. First, court services are available 7 days a week, which eliminates a weekend backlog. Second, there has been a strong emphasis on the implementation of alternatives to detention in order to stay within acceptable population levels. There are elements in this pattern which suggest that Scott

County may be a capacity driven system.

Scott County Community Jail and Alternatives Phase One Study
Section 4. Scott County Incarceration Trends

Figure 4.7 Monthly Average of 8 AM, 4 PM and Midnight Counts

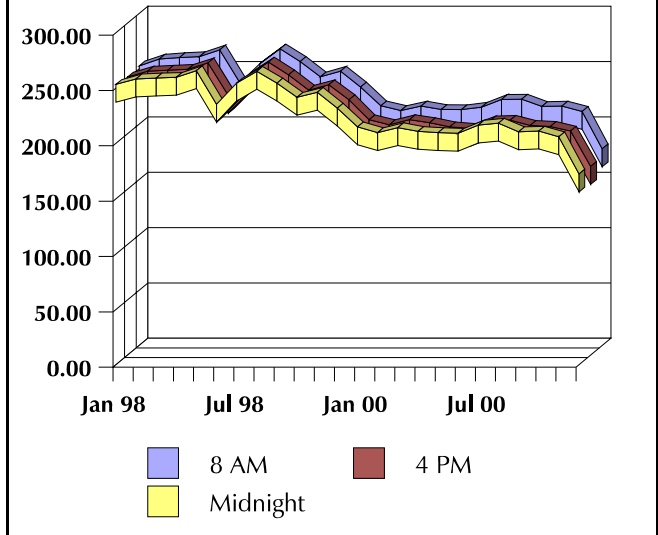
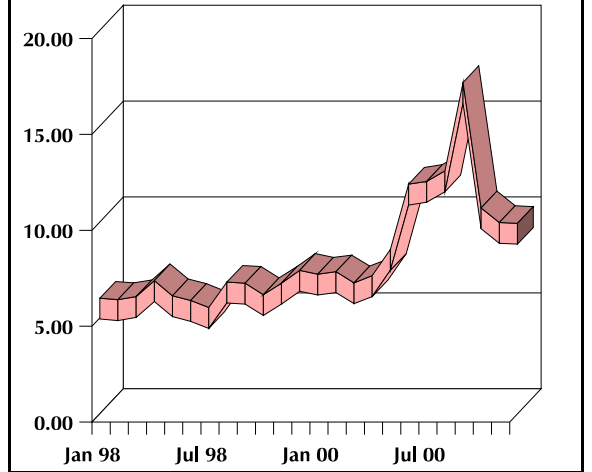


Figure 4.8 Monthly Average of Range between 8 AM, 4 PM and Midnight Counts



In general, for the two years studied, the 8 AM count has been highest, averaging 224.98 inmates. The 4 PM count has been lowest, averaging 219.89 inmates. The midnight count has been between the other two, averaging 222.29 inmates. In 1998, there was very little variation between the three counts; the average of the difference between highest and lowest count was 5.86 inmates; in 2000, there has been greater variation (an average of 9.64 inmates). The counts are still very consistent.

Trend in Average Daily Population

This section uses information which the Sheriff’s Department submits to the State to analyze the long-term trend in average daily population. The Department reports on their daily census in the following categories: the total number of inmates, pretrial inmates, sentenced inmates, felony inmates, misdemeanor inmates, adult males, adult females, juvenile males, juvenile females, and the racial distribution of the average daily population, and, for some years, the number of inmates on Work Release, serving OWI sentences, probation violations, and the number of inmates in other locations (outside of the Main Jail or the Annex. The Daily Census is generally run at or very close to midnight so it is likely to be closest to the “average” population for the day. The consultant has elected to use this source for average daily population rather than the Jail Report, because it is more accurate statistically. The Jail Report calculates ADP based on the midnight count on the first day of the month or the highest of the three counts each day. The data is provided in Appendix E.

Scott County Community Jail and Alternatives Phase One Study
Section 4. Scott County Incarceration Trends

Figure 4.9 Monthly Trend in Average Daily Population (1993 - 2000)

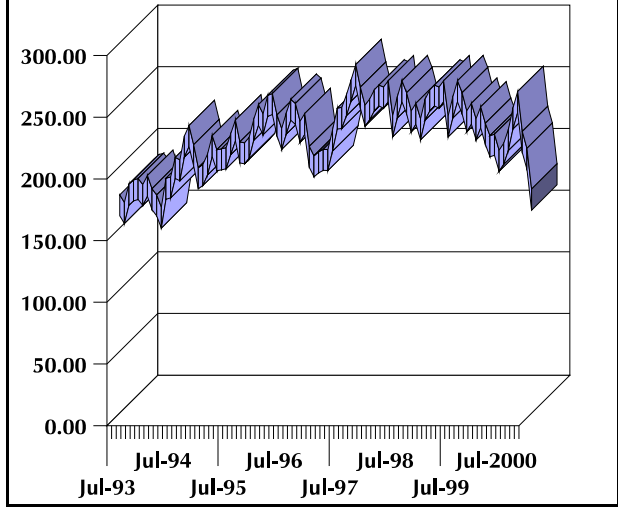
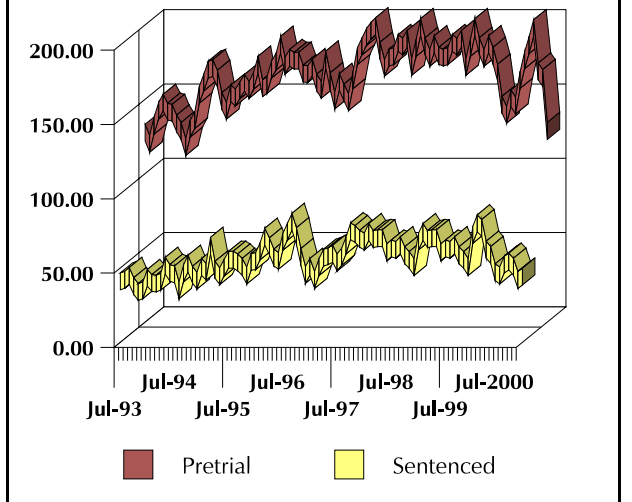


Figure 4.10 Monthly Trend in Average Daily Population of Pretrial and Sentenced Inmates (1993 - 2000)



Between July 1993 and December 2000, the average daily population of the facility has varied from a low of 158.53 to a high of 273.9. Average daily population shows quite a lot of variation. ADP peaked in October of 1997 and has, with the exception of August and September 2000, decreased since that time. During this period, pretrial inmates have comprised an average of 75% of the population, and sentenced inmates have accounted for the remaining 25%. This pattern has remained very consistent over this period. The proportion of pretrial inmates has not dropped below 64% and not exceeded 82%; the proportion of sentenced inmates has not dropped below 18% and not exceeded 36%. The ADP of pretrial inmates has ranged from a low of 117.93 to a high of 199.13. The ADP of sentenced inmates has ranged from a low of 33.93 inmates to a high of 81.17.

Figure 4.11 Monthly Trend in Average Daily Population of Felony and Misdemeanor Inmates (1993 - 2000)

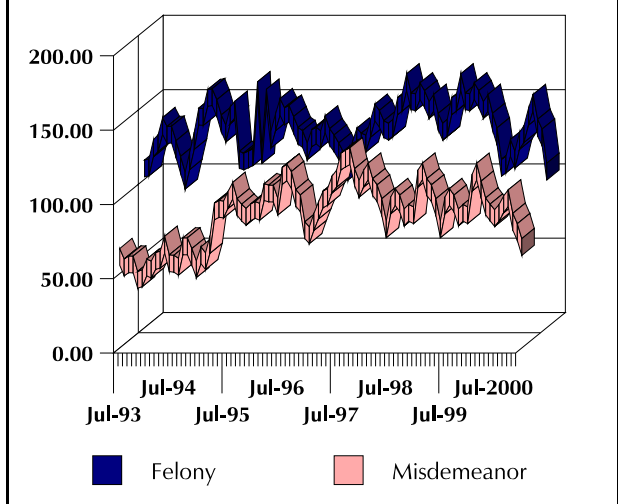
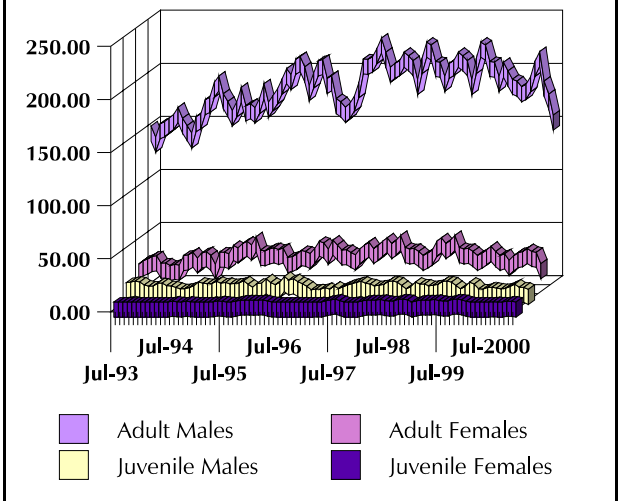


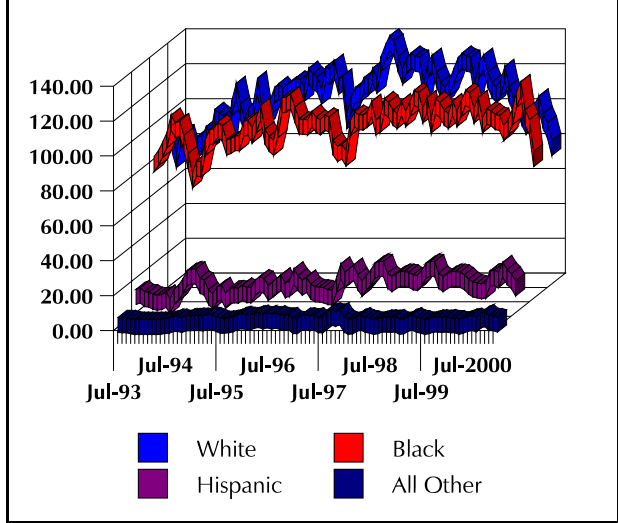
Figure 4.12 Monthly Trend in Average Daily Population by Age and Gender (1993 - 2000)



Scott County Community Jail and Alternatives Phase One Study
Section 4. Scott County Incarceration Trends

While the patterns of both felony and misdemeanor inmates show some similarities in terms of periods of peaks and valleys, there has been more variation in population groups when considered this way. Over this period, the ADP of felons has ranged from a low of 99 inmates to a high of 165.23 inmates. Felons have been 60% of the average daily population. At their lowest, felons accounted for 47% of the daily count and at highest, the accounted for 75% of the ADP. Figure 4.12 clearly shows that adult males account for the majority of the jail's population (on average 82%). At their lowest average monthly count, adult males accounted for 76% of the count, and at their highest average monthly count, adult males accounted for 87% of the ADP. Adult females account for about 14% of the ADP during the study period. There is more variation in the number of inmates in this population, with lowest counts accounting for 9% of the population, and highest counts accounting for 21%. Juvenile males and females (waived to adult court) account for 3.6% and .3% of the ADP respectively. Again there is considerable variation in the numbers of individuals in these classifications.

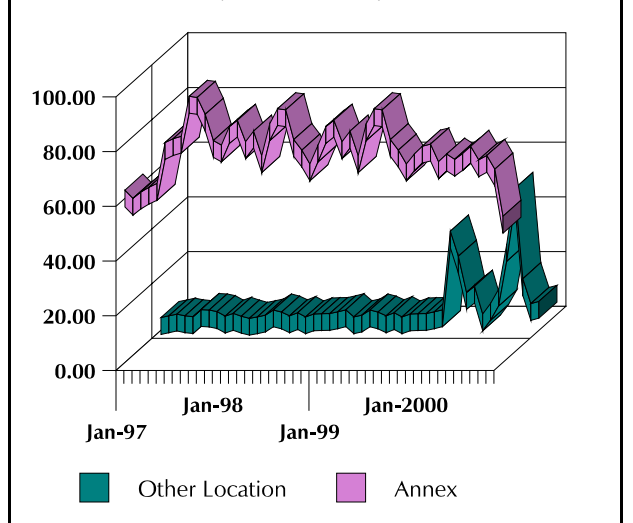
Figure 4.13 Monthly Trend in Average Daily Population by Race (1993 - 2000)



On average, during the period between 1993 and 2000, 48% of the jail population has been white and 44% has been black. Hispanics have accounted for about 7% of the population. The count of white inmates has varied from a low of 71.08 (41% of the count) to a high of 137.94 (55.6% of the count). The count of black inmates has varied from a low of 67.7 (38.3% of the count) to a high of 119.83 (55.4% of the count). The count of Hispanic inmates has varied from a low of 3.81 inmates (2.3% of the count) to a high of 25.27 (10.5% of the count).

During the period studied, about one-third of the inmates housed by Scott County are held at the Annex. During the period between January 1997 and December 2000, this population has averaged 75.29 inmates, with a low of 24.03 and a high of 94.23. Inmates held in other locations have generally accounted for about 3% of the population. There have been several periods, however, once the cap was established, when larger populations of inmates were held in other facilities. The maximum monthly count of inmates in other locations was 76.03 (33% of the population).

Figure 4.14 Monthly Trend in Average Daily Population of Inmates Housed at the Annex and in Other Locations (1993 - 2000)

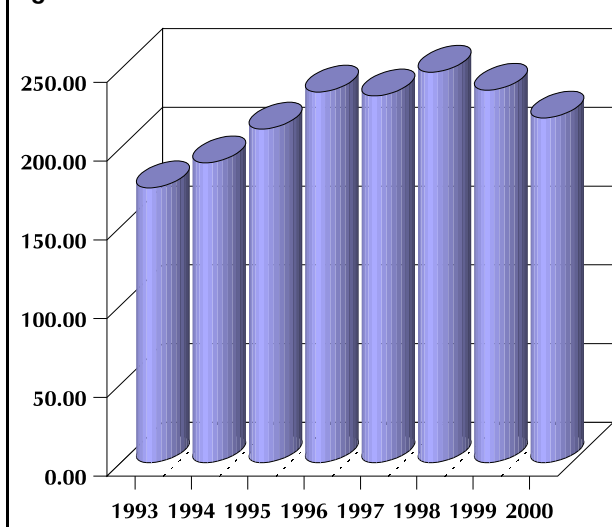


Scott County Community Jail and Alternatives Phase One Study
Section 4. Scott County Incarceration Trends

Table 4.8 Annual Trends in Average Daily Population

Statistic	1993	1994	1995	1996	1997	1998	1999	2000
Total	174.45	190.34	211.79	235.27	232.83	247.86	236.43	218.78
Pretrial	135.29	146.30	159.94	170.94	173.51	183.84	175.75	161.29
Sentenced	39.14	44.15	51.85	63.49	59.36	64.03	61.21	57.25
Felony	120.98	131.36	130.80	132.95	125.88	148.88	140.36	124.85
Misdemeanor	53.49	59.54	86.70	101.48	106.99	98.61	96.66	94.19
Adult Males	142.64	159.66	167.59	191.70	190.50	202.63	192.13	184.80
Adult Females	22.76	23.98	34.56	31.92	34.32	35.73	38.21	28.61
Juvenile Males	9.27	7.00	9.14	10.08	6.64	8.26	6.54	5.06
Juvenile Females	0.00	0.19	0.59	0.76	0.73	1.73	0.36	0.23
White	77.72	91.01	105.51	113.52	119.78	119.42	116.35	98.15
Black	88.30	85.86	93.58	102.92	95.30	107.20	103.44	101.72
Hispanic	7.69	12.76	10.61	14.89	15.16	19.91	16.81	16.75

Figure 4.15 Annual Trend in Total ADP



Figures 4.15 shows average daily population summarized by year rather than month, making the overall trend somewhat more obvious. ADP increased markedly from 1993 to 1998. Since that time, it has show a more gradual decline.

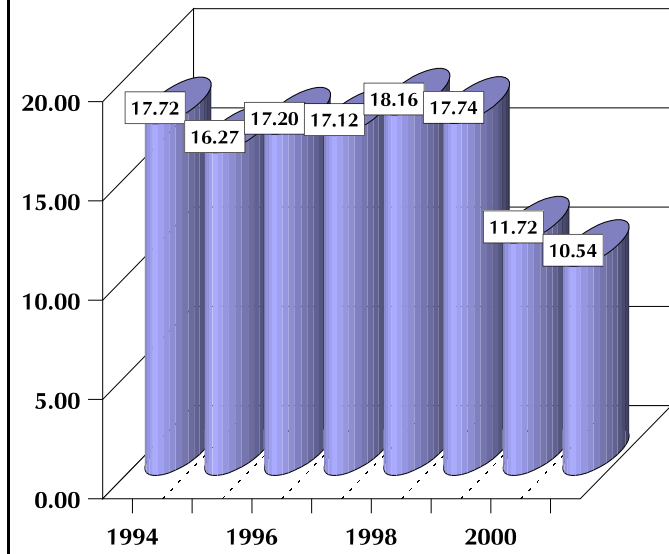
Average Length of Stay (ALOS)

Average length of stay is estimated by dividing the number of days spent in the facility by inmates (average daily population times 365 days in the year) by the number of admissions that year. This method is not as accurate as subtracting the admission date from the release date for all inmates housed because it does not provide for either inmates who stay in custody longer than a year or for inmates who spend less than one day

in custody. As a result, it is an “artificial” statistic. However, when long time periods are used, it does show trends. This data was calculated from the Annual Report, using statistics reported to the state.

Scott County Community Jail and Alternatives Phase One Study
Section 4. Scott County Incarceration Trends

Figure 4.16 Estimated Average Length of Stay (ALOS)



Between 1994 and 2001, average length of stay has decreased 33% from a high of 18.16 days in 1998 to a low of 10.54 in 2001. During this period, average length of stay remained between 16.27 and 18.16 from 1994 through 1999. In 2000, length of stay decreased markedly.

Conclusions

1. Between 1994 and 2001, admissions to the facility increased, primarily as a result of the closing of the City of Davenport's Holding facility.
2. Average daily population increased until 1998 when it began to decline. ADP has not returned to the levels seen in the early 1990's, but in 2000, the ADP was 218.78, down from a high of 247.86 in 1998.
 - a. There is little variation by day of the week.
 - b. There is some variation by time of year.
 - c. About 75% of the jail population are pretrial detainees.
 - d. About 60% of the jail population are felons.
 - e. About 80% of the jail population is male.
 - f. About 48% of the jail population is white, and about 44% of the jail population is black.
 - g. About one-third of inmates are held at the annex.
3. Average length of stay has decreased significantly in the last two years - from about 17 days to about 10 days. This is the means by which the County has managed its jail population.